

Parkheath

Sold on Service

Antrim Road NW3

£5,500 PCM (£1270 per week) - Camden Band F



SHORT LET

Spacious 3 bedroom, 2 bathroom apartment

Modern kitchen diner with appliances

2 further bedrooms and 3 piece family bathroom

Moments from Belsize Park underground station

Mansion block with gardens and porter

Generously sized reception with balcony access

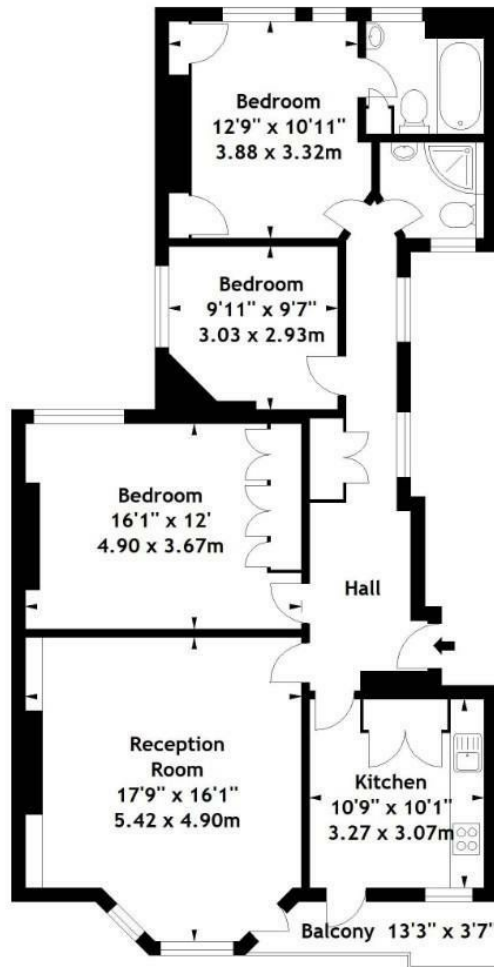
Principal bedroom with en suite bathroom

Prime location close to England's Lane cafés

Rent inclusive of council tax and utilities

Belsize Park Office 020 7431 3104

Antrim Mansions,
Antrim Road, NW3
Approx. Gross Internal Area
1057 Sq Ft - 98.20 Sq M



First Floor

Measured in accordance with RICS guidelines. Every attempt is made to ensure accuracy, however all measurements are approximate. This floor plan is for illustrative purposes only and is not to scale.

© Datography Ltd 2014
Photographs * Floorplans * Virtual Tours
Tel: 0845 643 4401 www.datography.com

The particulars do not constitute part of an offer or contract. The particulars, including text, photographs and plans, are for the guidance only of prospective purchasers/tenants and must not be relied upon as statements of fact. The descriptions provided therein represent the opinion of the author and whilst given in good faith should not be construed as statements of fact. Nothing in these particulars shall be deemed a statement that the property is in good condition or otherwise or that any services or facilities are in good working order. All measurements are approximate