



# Trading Places

Coastal and Country Property Specialists



## 26 Meadow Vale

Northumberland Park, Newcastle Upon Tyne, NE27 0BF

Trading Places are delighted to welcome to the rental market, this lovely two bedroom, ground floor apartment situated in a very attractive modern residential development. Benefiting from excellent road transport links to the city centre being situated next to the A19, as well as Northumberland Park Metro station being nearby and Cobalt Business Park, Silverlink retail park, and local supermarkets.

The property briefly comprises of; a spacious open plan lounge/kitchen/diner with a bay window allowing plenty of light to fill the room. There is a well equipped kitchen with fitted wall and base units including integral appliances such as a hob, oven, fridge, freezer, and washer/dryer. There are two double bedrooms, one of which benefits from fitted wardrobes and an en-suite shower room. The main bathroom consists of a bath, hand basin and W.C. Externally there is an allocated car parking spot to the rear and visitor parking is to the front of the building.

**£850 Per Month**

# 26 Meadow Vale

Northumberland Park, Newcastle Upon Tyne, NE27 0BF



- Fabulous Ground Floor Apartment
- Excellent Location, Close to Metro and Shops
- Excellent Transport Links Nearby
- Two Double Bedrooms (Master With En-Suite)
- Popular Development
- Bright And Airy Open Lounge/Dining Kitchen
- Designated Resident And Visitor Parking

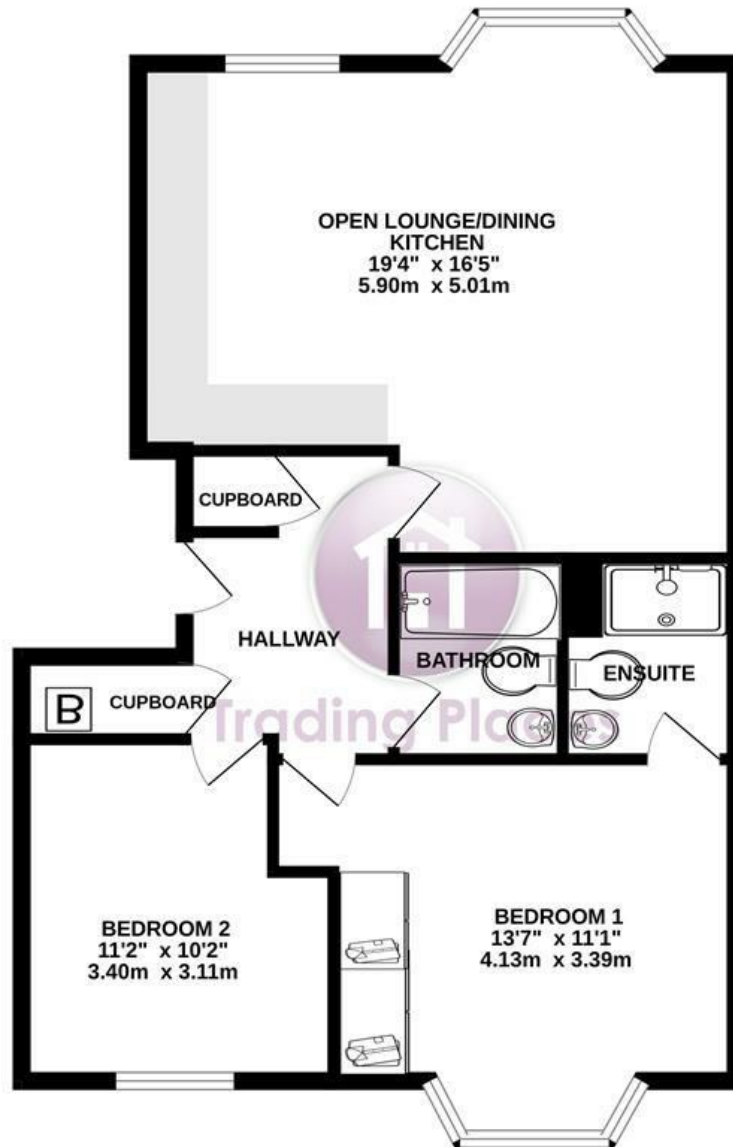


[Directions](#)



# Floor Plan

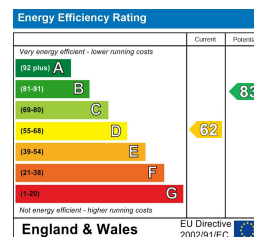
GROUND FLOOR  
707 sq.ft. (65.6 sq.m.) approx.



TOTAL FLOOR AREA : 707 sq.ft. (65.6 sq.m.) approx.

Whilst every attempt has been made to ensure the accuracy of the floorplan contained here, measurements of doors, windows, rooms and any other items are approximate and no responsibility is taken for any error, omission or mis-statement. This plan is for illustrative purposes only and should be used as such by any prospective purchaser. The services, systems and appliances shown have not been tested and no guarantee as to their operability or efficiency can be given.  
Made with Metropix ©2024

These particulars, whilst believed to be accurate are set out as a general outline only for guidance and do not constitute any part of an offer or contract. Intending purchasers should not rely on them as statements of representation of fact, but must satisfy themselves by inspection or otherwise as to their accuracy. No person in this firm's employment has the authority to make or give any representation or warranty in respect of the property.



2a Kew Gardens, Whitley Bay, Tyne and Wear, NE26 3LY  
Tel: 0191 251 1189 Email: info@tp-property.co.uk  
www.tp-property.co.uk

