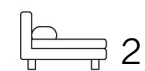


Living
made
better

Helene House
Canning Town, E16 3NZ



Asking Price £365,000

Helene House, Canning Town, E16 3NZ

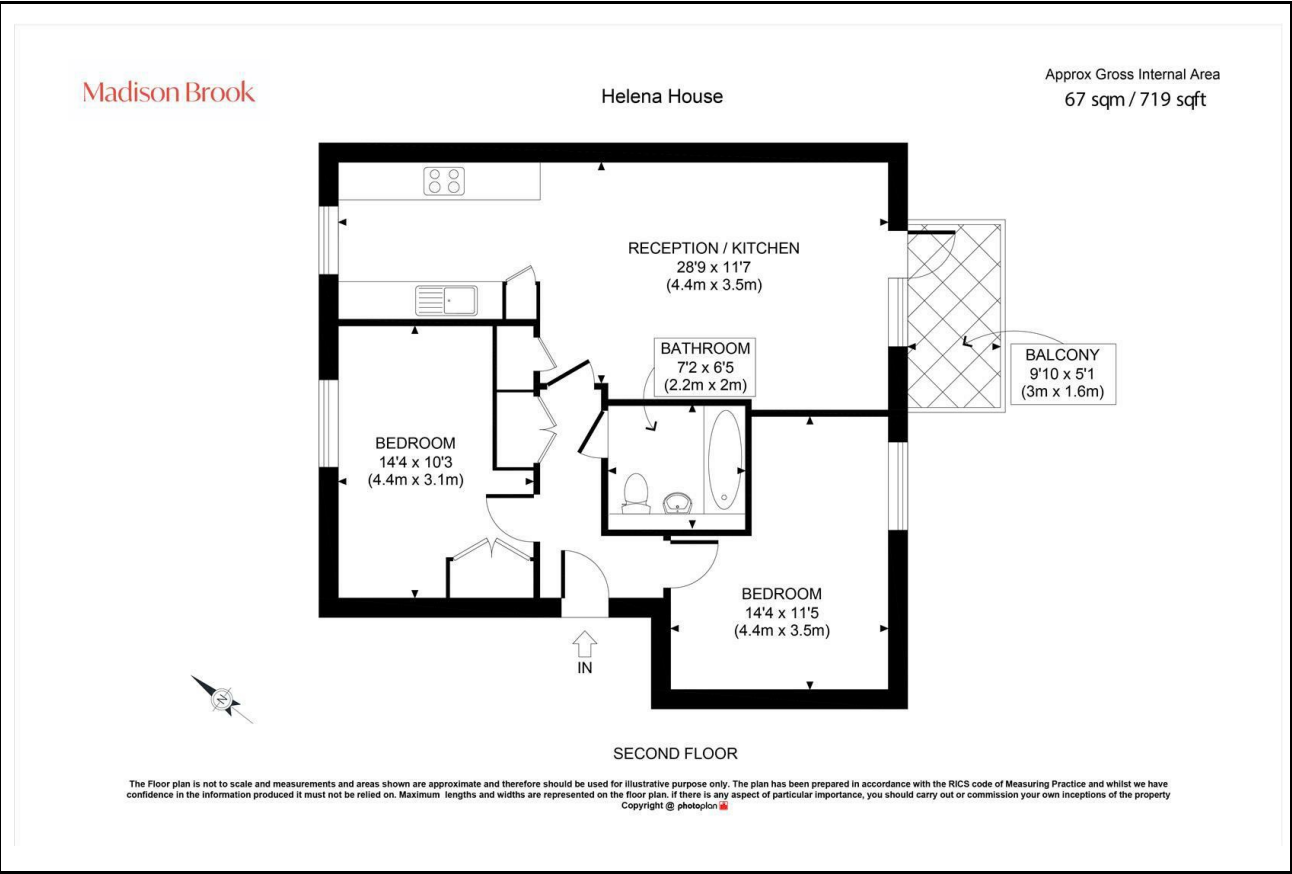
Madison Brook

Property Summary

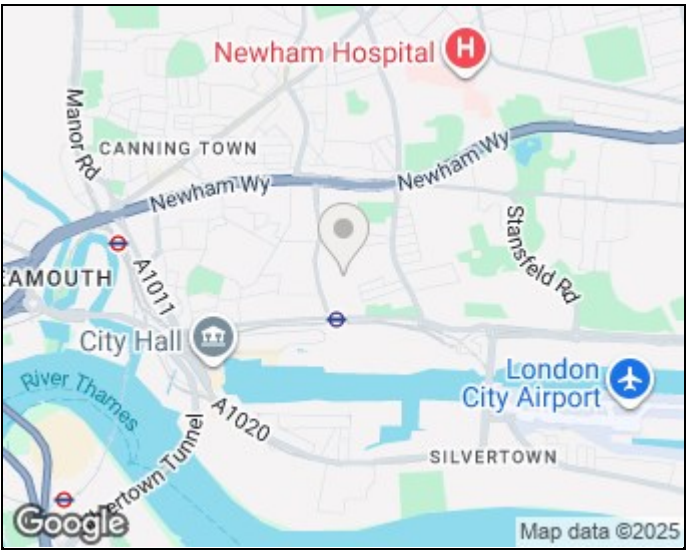
A well-maintained two-bedroom apartment on the second floor of Helena House, offering 719 sq. ft. of bright, modern living space. The home features a spacious open-plan kitchen/living room with integrated appliances and access to a private balcony, two generously sized double bedrooms (one with built-in wardrobes), and a smart three-piece bathroom.

Ideally located close to Freemasons Road, the apartment is within walking distance to the Elizabeth Line and numerous local shops, providing excellent connectivity and convenience. Resident permit parking included.

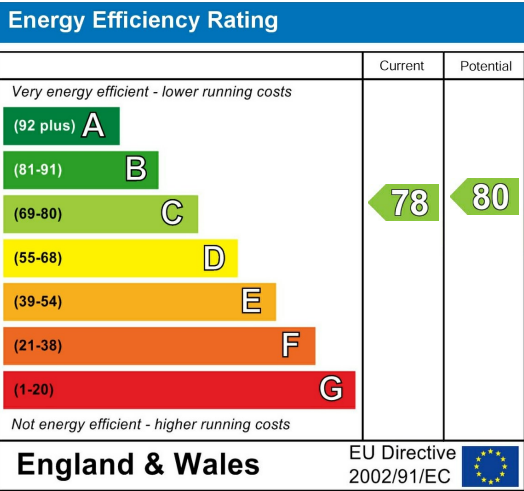
Floorplan



Area Map



Energy Efficiency Graph



These particulars, whilst believed to be accurate are set out as a general outline only for guidance and do not constitute any part of an offer or contract. Intending purchasers should not rely on them as statements of representation of fact, but must satisfy themselves by inspection or otherwise as to their accuracy. No person in this firm's employment has the authority to make or give any representation or warranty in respect of the property.

Unit B 20 Western Gateway, Royal Victoria
Dock, London, E16 1BS
Tel: 020 3946 6000 Email:
docklands@madisonbrook.com
<https://madisonbrook.com/>