



Price

£60,000

Leasehold

1x  1x  1x 

**Brunel Court, Nutfield
Place, Portsmouth,
Hampshire, PO1**

cubitt & west
Helping you move forwards



Main features

- Open-plan lounge and kitchen
- Well presented throughout
- For residents aged 55 and over
- Communal lounge and facilities
- Situated close to all daily amenities

Accommodation

SECOND FLOOR

Entrance Hallway

Lounge: 14'3 x 11'0 (4.35m x 3.36m)

Kitchen: 10'6 x 7'2 (3.20m x 2.19m)

Bedroom : 16'10 x 10'4 (5.13m x 3.15m)

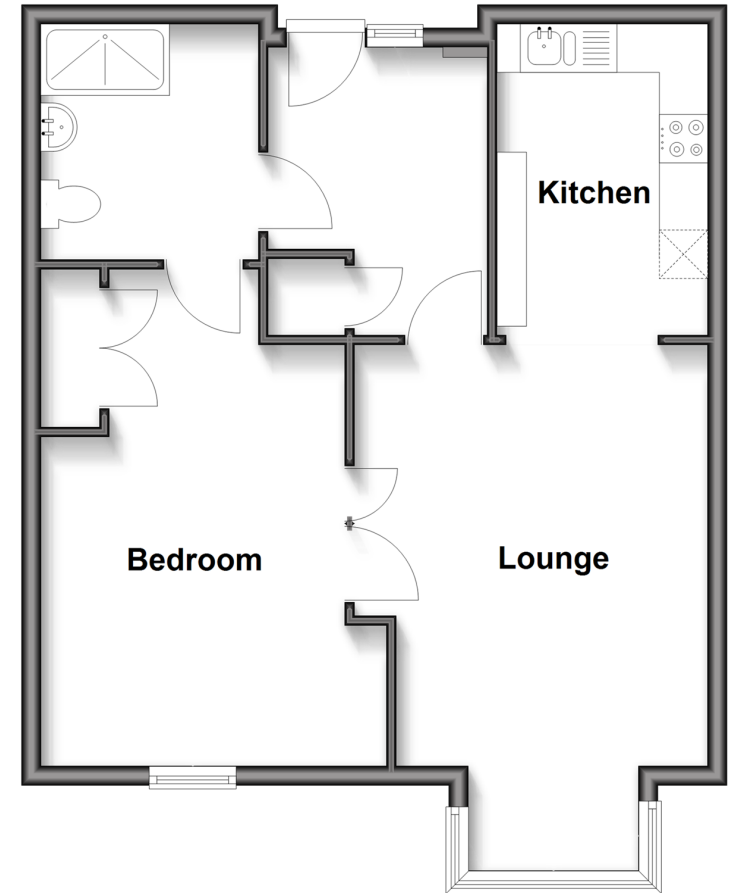
Wet Room

OUTSIDE

Communal Garden

Second Floor

Approx. 54.2 sq. metres (583.6 sq. feet)



Call Portsmouth - 023 9266 1213 ■ cubittandwest.co.uk

- A private rental licensing scheme applies to some properties in this area, please contact us before proceeding
- Legal advice should be taken to verify fixtures/fitings, planning, alterations and/or lease details
- Appliances & services are untested, dimensions are approximate and floor plans are not to scale



41634908/20250618/MO1/JV