



Bamburgh House and Lindisfarne Cottage, Adderstone Steading, Belford

£595,000





Bamburgh House and Lindisfarne Cottage, Adderstone Steading

Belford

Council Tax band: D

Tenure: Freehold

- Breathtaking views towards Bamburgh Castle and the Northumberland coastline
- Holiday letting potential in a prime coastal location
- Character features throughout including stone walls and traditional details
- Two properties - currently run as successful holiday lets
- Flexible layout perfect for multi-generational living or dual family use
- Close to Bamburgh, Holy Island, and coastal walking routes
- Private off-road parking within a quiet, well-maintained development
- Excellent connectivity to the A1, providing direct links between Newcastle and Edinburgh







Approximate total area⁽¹⁾

797 ft²

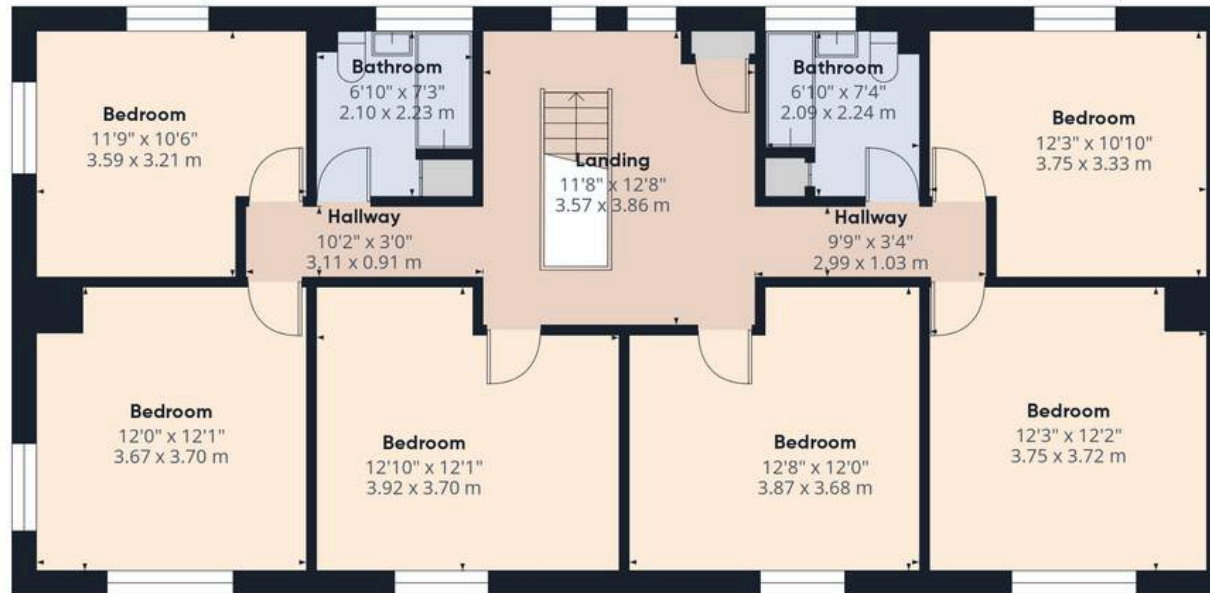
74 m²

(1) Excluding balconies and terraces

Calculations reference the RICS IPMS 3C standard. Measurements are approximate and not to scale. This floor plan is intended for illustration only.



First Floor



Floor 1

Approximate total area⁽¹⁾

2205 ft²

205.2 m²

(1) Excluding balconies and terraces

Calculations reference the RICS IPMS 3C standard. Measurements are approximate and not to scale. This floor plan is intended for illustration only.

GIRAFFE360







Charming Cottage & Substantial 6-Bed Home | Coast & Countryside Views | Exceptional Lifestyle & Investment Opportunity

Northumberland Properties are delighted to present a rare opportunity to acquire **Lindisfarne Cottage and Bamburgh House together** – two beautifully maintained, stone-built properties set within the stunning Northumberland countryside, just minutes from the highly sought-after coastal villages of Bamburgh and Seahouses.

Offering far-reaching views across open fields towards the coastline and Bamburgh Castle, this unique combined purchase presents outstanding potential for multi-generational living, a substantial holiday letting business, or an expansive coastal retreat.

Finished in traditional materials with slate roofing and characterful stonework throughout, both properties seamlessly blend rural charm with practical, flexible living.



Northumberland Properties

12 Market Street, Alnwick - NE66 1TL

01665660910 • info@northumberlandproperties.co.uk • www.northumberlandproperties.co.uk



Northumberland
Properties