



## City Road, EC1Y

£700,000

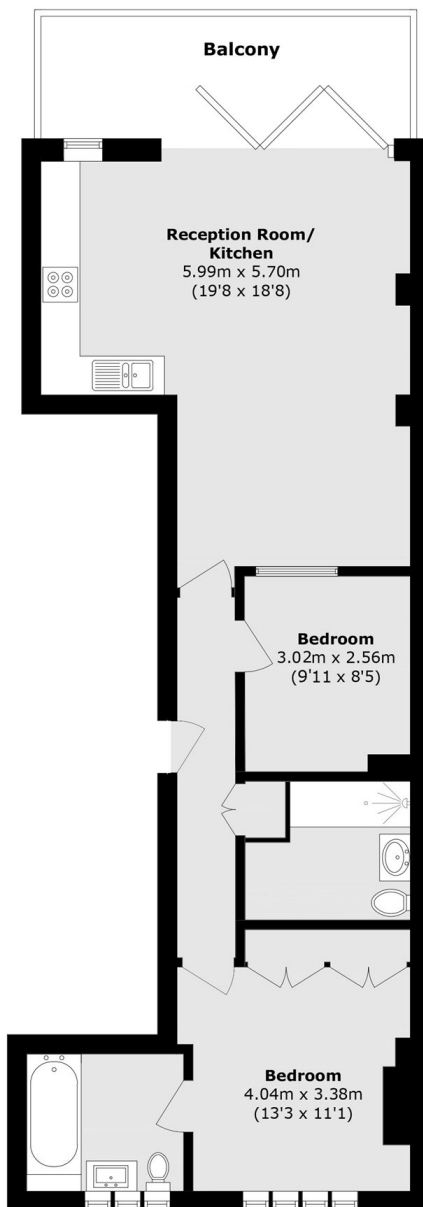
A bright and spacious two-bedroom apartment with views over the historic Honourable Artillery Company Grounds, originally commissioned by Henry VIII in the 1500s. The apartment offers two double bedrooms, one with an en-suite, a family bathroom, and an open-plan kitchen/living room that leads onto the private, west-facing balcony, through the bi-folding doors.

The apartment is ideally situated for easy access to the City. The area benefits from excellent transport connections via the Underground and National Rail services. Local amenities include restaurants, cafés, retail shops, and business offices, all within close proximity. The property is not within a conservation area, national park, or greenbelt land, and there are no listed building restrictions.

### Features

- West Facing Balcony
- Artillery Ground Views
- Secondary Glazing
- Central Location
- Wood Floors
- Lift Access

# City Road, London, EC1Y



Total area (approx.): 70.0 sq. m (753.4 sq. ft)

Balcony area (approx.): 10.7 sq. m (115.1 sq. ft)