



The Pump House, Deanswood Farm, Stockcross

Guide Price £1,850 pcm

mcfarlane
property.com



The Pump House, Deanswood Farm

Stockcross, Newbury

Tucked away and close to the highly exclusive Stockcross and accessed via the private road, this two double bedroom detached home offers a rare blend of privacy, quality, and convenience. Just moments from Newbury town centre yet surrounded by mature trees and a peaceful residential setting, the property is an exceptionally well kept family home.

Set behind a small front garden, the house opens into generous, light filled living spaces, including a spacious living room separate dining room. The kitchen consists of fitted units and appliances, creating a bright and sociable hub for everyday living.

The ground floor also offers a comfortable double bedroom and a modern family bathroom, while the first floor adds a further light filled double bedroom and ensuite bathroom with shower.

Outside, the rear garden is fully private, low maintenance space ideal for families and entertaining.

The property also benefits from its position on a private road, maintained by the farm, ensuring the approach remains well maintained.

- Two Bedroom detached House
- Living and Dining rooms
- Private Estate



This is a home that—offers generous space, modern comforts, and a premium location rarely available on rental market.

Council Tax Band: E (West Berkshire council website for current cost).

EPC: D. Utility Services: Mains water, drainage and electric.

Internet & Mobile: Further information on availability and speeds

can be found on the Ofcom website.

At a rent of £1850.00 per calendar month: Holding deposit of one

week's rent £426.92, Security deposit of 5 weeks rent £2134.60

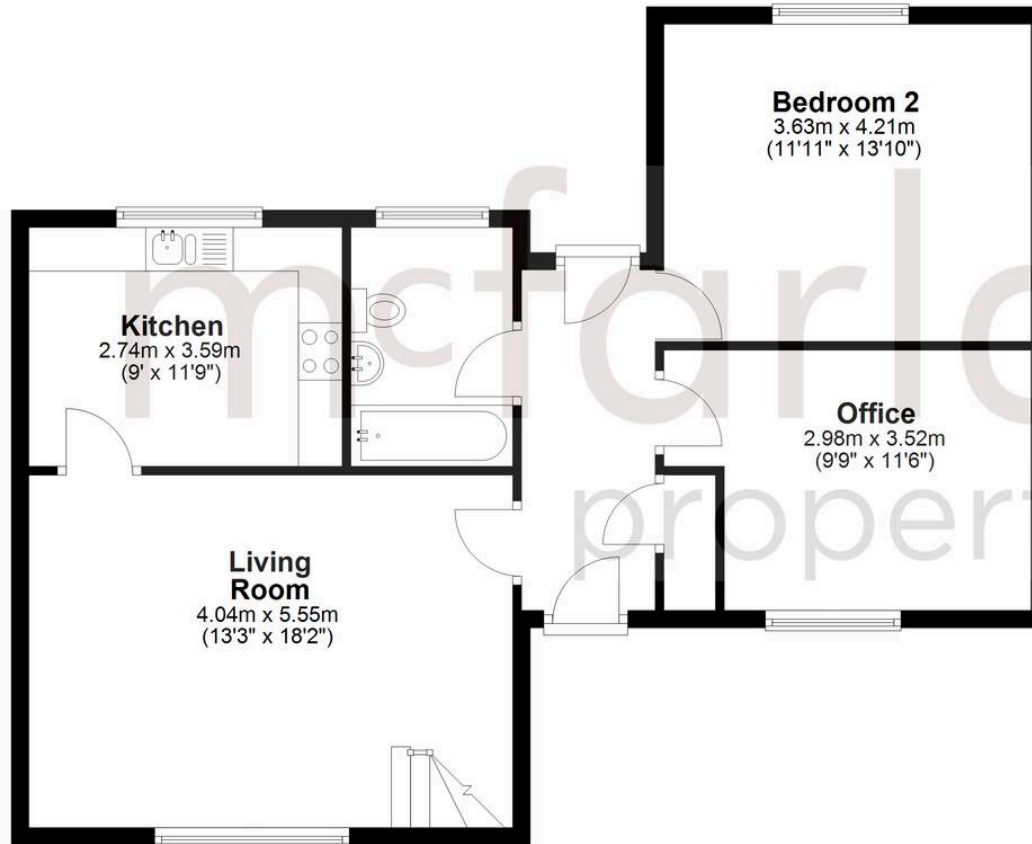
Available from 1st May 2026

- Two Bedroom detached House
- Living and Dining rooms
- Private Estate



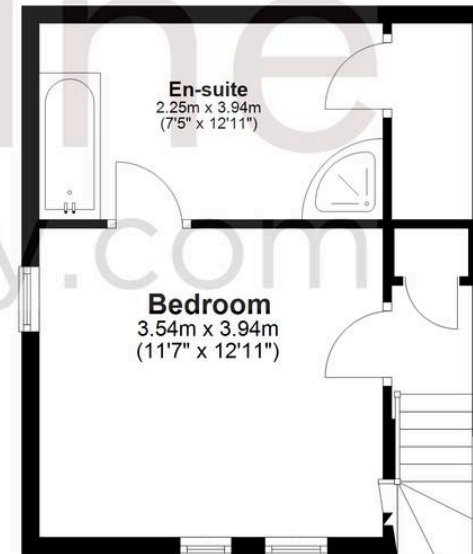
Ground Floor

Approx. 73.1 sq. metres (787.1 sq. feet)



First Floor

Approx. 27.8 sq. metres (299.6 sq. feet)



Total area: approx. 101.0 sq. metres (1086.7 sq. feet)

McFarlane Sales & Lettings

McFarlane Sales & Letting, 106 High Street - SN8 1LT

01672 514380 • marlborough@mcfarlaneproperty.com • www.mcfarlaneproperty.com/

mcfarlane
property.com