



TO LET

Legh House, Hollow Lane, Knutsford





Knutsford, WA16 8WB
Legh House, Hollow Lane
£1,200 pcm



The Property

This beautifully presented apartment sits on the 1st floor of a modern block just a short walk from Knutsford Town Centre and the railway station. With two bedrooms and two bathrooms, the property is ideal for singles, couples or sharers. Particular mention must be made of the bright living room with Juliet balcony, offering stunning living space with an open, leafy aspect. The property sits in beautifully maintained communal gardens and benefits from allocated parking behind secure

electronic gates, as well as a further space in the main car park, and ample visitors' spaces.

Directions

From the roundabout in the centre of Knutsford, proceed along King Edward Road turning left at the traffic lights onto Adams Hill passing the railway station. At the next set of traffic turn left onto Hollow Lane and then turn immediately left into the Legh House development.

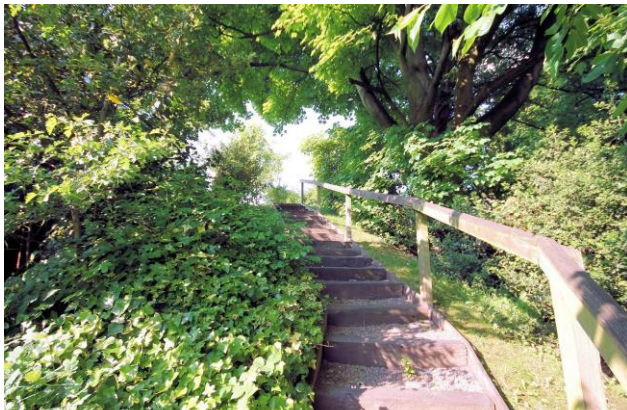
- A modern first floor apartment situated in a popular development within a short stroll of the town centre
- Living/dining room with French doors and Juliet balcony
- Two double bedrooms, two bathrooms (one en-suite)
- Secure allocated parking space and ample visitor parking
- Attractive communal gardens
- Furnishing Optional
- Available April

Postcode – WA16 8WB

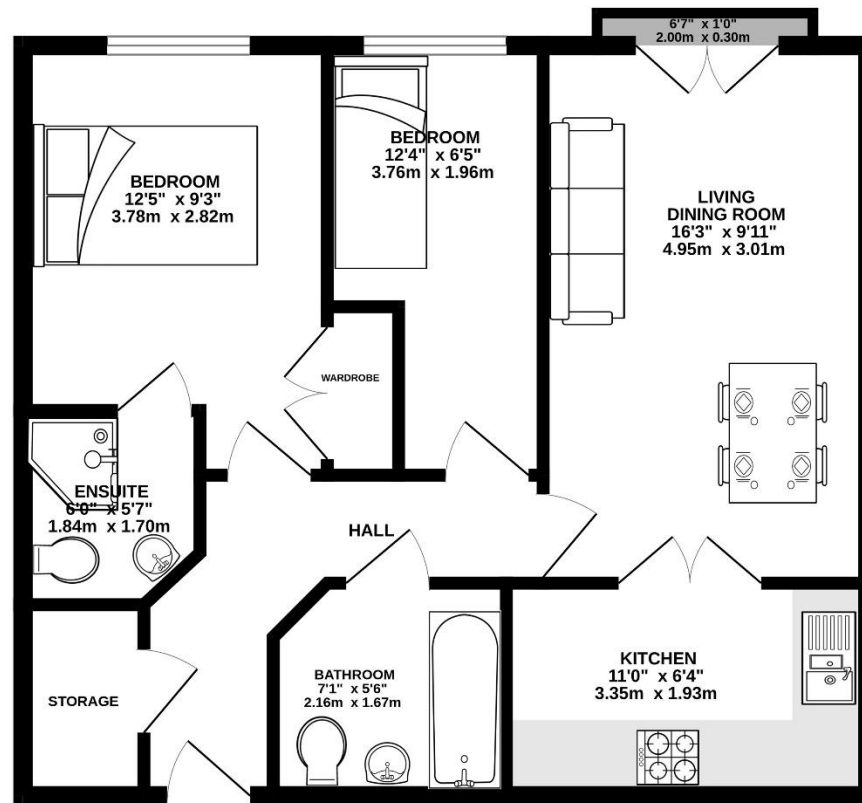
EPC Rating – B

Local Authority – Cheshire East

Council Tax – Band C



FIRST FLOOR
586 sq.ft. (54.4 sq.m.) approx.



TOTAL FLOOR AREA : 586 sq.ft. (54.4 sq.m.) approx.

Whilst every attempt has been made to ensure the accuracy of the floorplan contained here, measurements of doors, windows, rooms and any other items are approximate and no responsibility is taken for any error, omission or mis-statement. This plan is for illustrative purposes only and should be used as such by any prospective purchaser. The services, systems and appliances shown have not been tested and no guarantee as to their operability or efficiency can be given.
Made with Metropac ©2023

103 King Street, Knutsford, Cheshire, WA16 6EQ

01565 654 000

E: info@irlamsestateagents.co.uk

www.irlamsestateagents.co.uk

I1021_ Printed by Ravensworth 01670 713330

Irlams (Estate Agents) Ltd for themselves and for the vendors or lessors of this property whose agents they give notice that:

- The particulars are set out as a general outline only for the guidance of intending purchasers or lessees, and do not constitute, nor constitute part of, an offer or contract;
- All descriptions, dimensions, references to condition and necessary permissions for use and occupation, and other details are given in good faith and are believed to be correct but any intending purchasers or lessees should not rely on them as statements or representations of fact, but must satisfy themselves by inspection or otherwise as to the correctness of each of them;
- No person in the employment of Irlams (Estate Agents) Ltd has any authority to make or give any representation or warranty whatsoever in relation to this property.


IRLAMs
of Knutsford