



CLAREVILLE GROVE

South Kensington, SW7

£1,050,000

2 Bed | 2 Bath | 791 sqft

SANDERSONS

LONDON



A lovely two bedroom apartment in the Heart of South Kensington

Set in the popular area of South Kensington, Clareville Grove offers a delightful apartment that combines comfort and elegance. Spanning 791 square feet, this well-appointed residence features two spacious bedrooms, perfect for relaxation or hosting guests. The apartment boasts two bathrooms, ensuring convenience for all occupants.

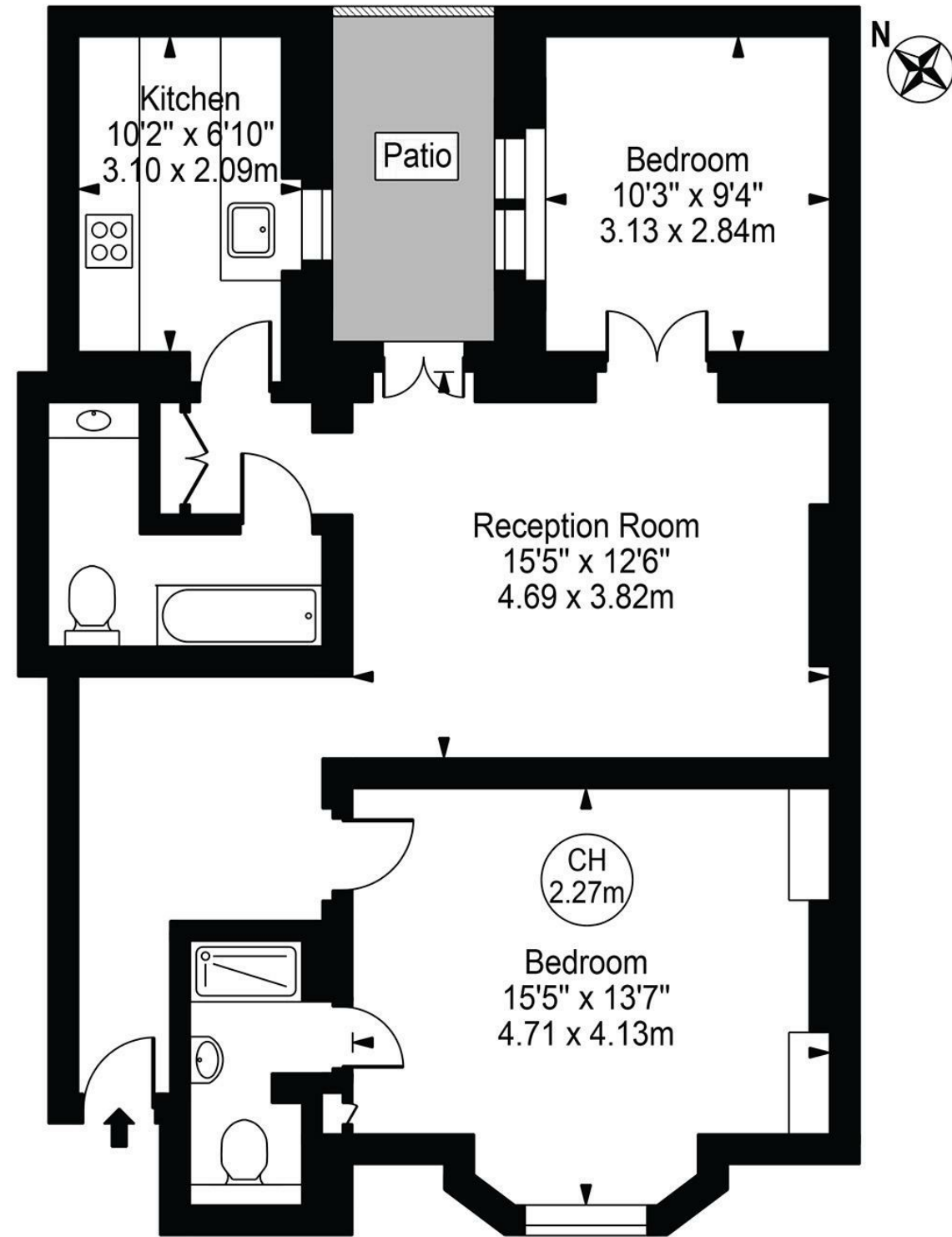
The inviting reception room serves as a central hub for both entertaining and unwinding, providing a warm atmosphere that complements the stylish design throughout. With its prime location, residents can enjoy easy access to a variety of local amenities, including shops, restaurants, and cultural attractions that South Kensington is renowned for.

Clareville Grove is a mere 0.3 miles away from South Kensington underground station, making access to all areas of Central London extremely convenient.



Clareville Grove, SW7

Approx. Gross Internal Area 791 Sq Ft - 73.51 Sq M



Lower Ground Floor

For Illustration Purposes Only - Not To Scale

This floor plan should be used as a general outline for guidance only and does not constitute in whole or in part an offer or contract. Any intending purchaser or lessee should satisfy themselves by inspection, searches, enquiries and full survey as to the correctness of each statement. Any areas, measurements or distances quoted are approximate and should not be used to value a property or be the basis of any sale or let.

KEY FEATURES

- Two bedrooms, Two bathrooms
- Period building
- Heart of South Kensington
- Close to shops and cafés
- Close to Transport
- Private Outside Space






EPC Rating: D | Council Tax Band: G

SANDERSONS

LONDON

 108 Holland Park Avenue, London,
W11 4UA

 020 7602 6725

 james@sandersonslondon.co.uk

 sandersonslondon.co.uk