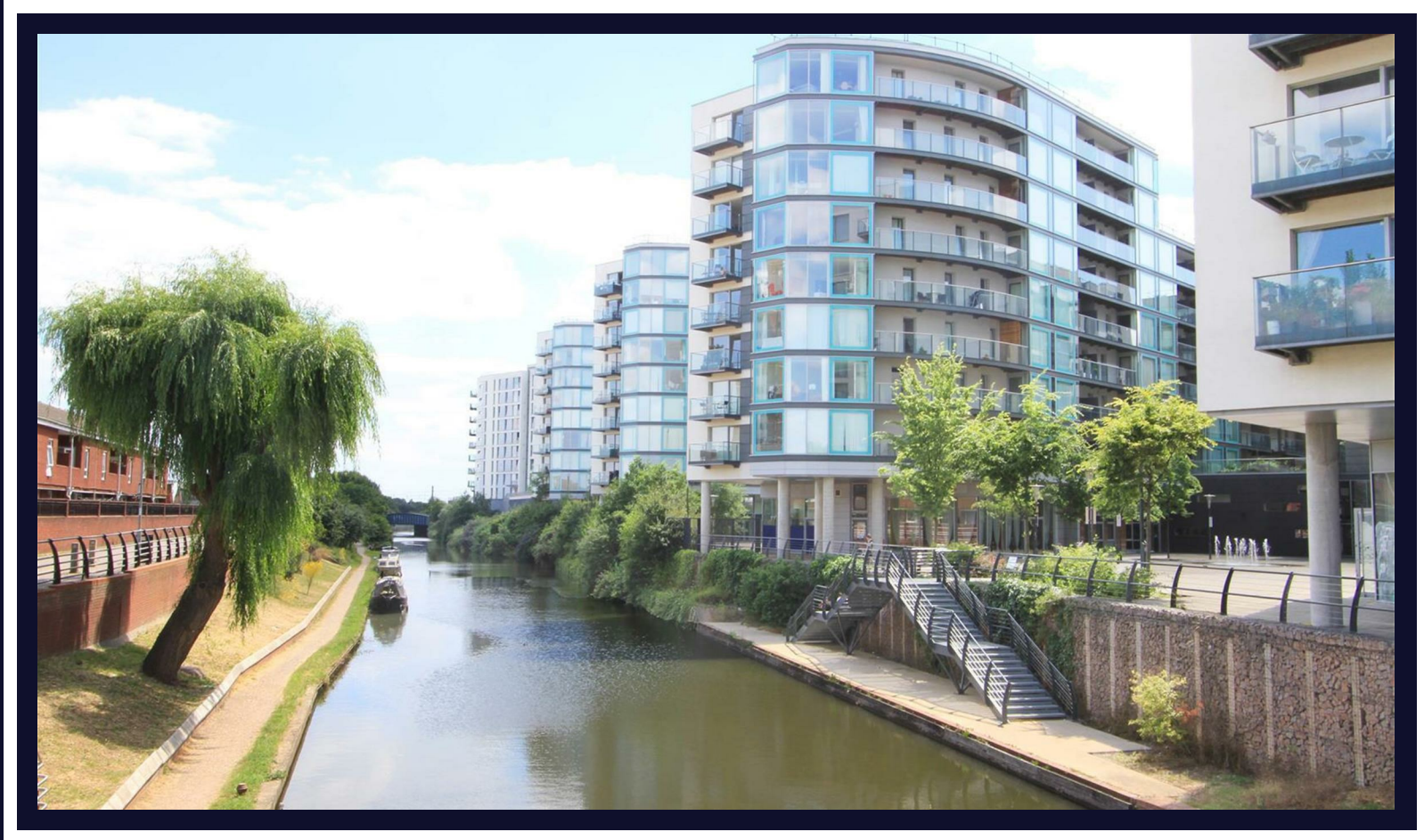


# Cardinal Building

Hayes • • UB3 4FD  
PCM: £1,525 PCM



coopers  
est 1986

Presented to the market, this luxury one bedroom apartment located in the sought after Highpoint Village Development. The property is situated next door to Hayes and Harlington Station, provides easy access to Stockley Park, Local Amenities and provides great bus links.

Features include a double bedroom with a built in wardrobe, spacious lounge leading to a private terrace, fitted kitchen with appliances, Bathroom with shower, Great Storage Throughout, Concierge, Gymnasium, Swimming pool.

Available Furnished.

Easy access to Central London

Close to Heathrow Airport

Close to Stockley Business Park

Abundance of local amenities

Great transport links

Gymnasium

Stone's throw from Hayes and Harlington Station

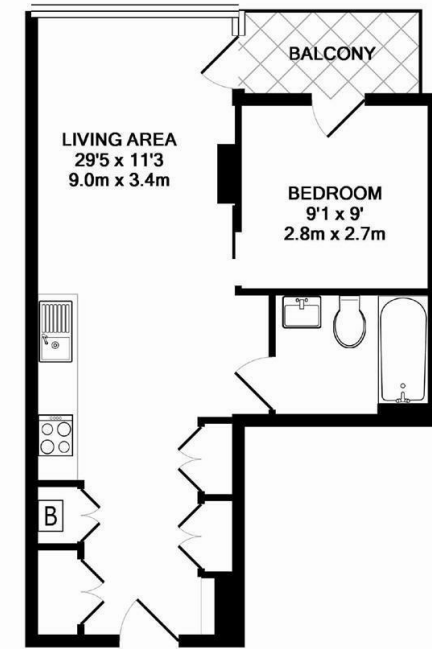
Concierge

Furnished

Private Balcony

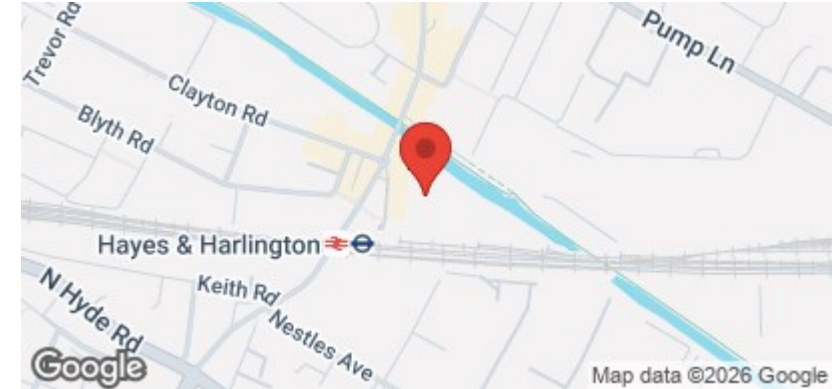
**Available Date**

11th June 2026



TOTAL APPROX. FLOOR AREA 412 SQ.FT. (38.3 SQ.M.)

Whilst every attempt has been made to ensure the accuracy of the floor plan contained here, measurements of doors, windows, rooms and any other items are approximate and no responsibility is taken for any error, omission, or mis-statement. This plan is for illustrative purposes only and should be used as such by any prospective purchaser. The services, systems and appliances shown have not been tested and no guarantee as to their operability or efficiency can be given.  
Made with Metropix ©2014

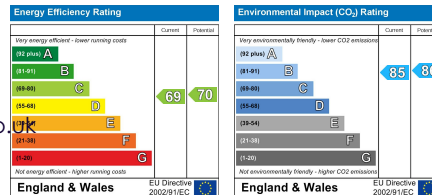


**coopers**  
est 1986

**01895 230 103**

109 Hillingdon Hill, Hillingdon Village,  
Middlesex, UB10 0JQ  
propertymanagement@coopersresidential.co.uk

**CoopersResidential.co.uk**



Important Notice: These particulars, whilst believed to be accurate are set out as a general outline only for guidance and do not constitute any part of an offer or contract. Intending purchasers should not rely on them as statements or representation of fact, but must satisfy themselves by inspection or otherwise has the authority to make or give any representation or warranty in respect of the property.