



Norbury Avenue

Watford, WD24 4PJ

Asking Price £685,000



Well presented Five/Four bedroom semi detached townhouse situated on Norbury Avenue, a private estate, Central Watford. This spacious home set over three floors comprises an entrance hall, guest cloakroom, modern integrated kitchen open plan to the dining area and large conservatory which is flooded with natural light overlooking the rear garden.

The first floor has two double bedrooms both with fitted wardrobes and ensuites.

The second floor accommodates three further bedrooms or two bedrooms and a office, Master bedroom has fitted wardrobes and ensuite, bedroom four also has fitted wardrobes and a Family bathroom off the landing.

The property also benefits from having off street parking, garage and is being sold with no onward chain.

Norbury Avenue is within close proximity walk to Atria Shopping Centre, Watford Junction Train Station and is ideally located close to major roads M1, M25 and A41.

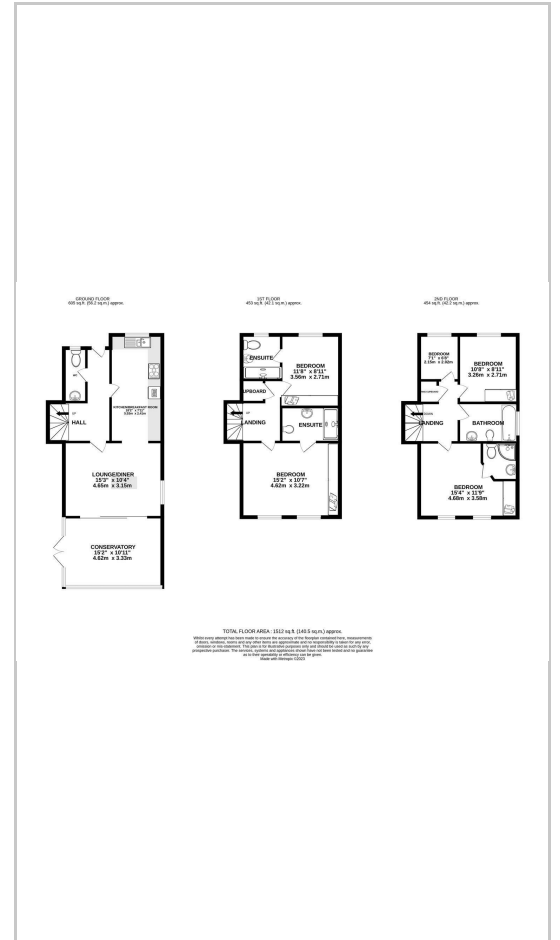




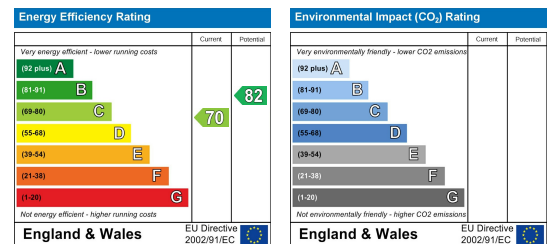
Area Map



Floor Plans



Energy Efficiency Graph



These particulars, whilst believed to be accurate are set out as a general outline only for guidance and do not constitute any part of an offer or contract. Intending purchasers should not rely on them as statements of representation of fact, but must satisfy themselves by inspection or otherwise as to their accuracy. No person in this firm's employment has the authority to make or give any representation or warranty in respect of the property.