

whiteley helyar



690 ft²



2 bedrooms



bathroom



permit
parking

Guide Price £300,000

Flat 5, 15 Vineyards, Bath, BA1 5NA

A bright and spacious top floor flat in this highly convenient location within the city centre. This well presented apartment offers a number of delightful features such as sash window, feature fireplaces and exposed floorboards and is offered for sale with no onward chain.

ACCOMMODATION

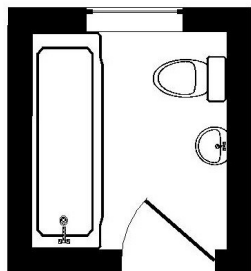
communal entrance hall
entrance hall
reception hall
sitting dining room
kitchen breakfast room
two double bedrooms
bathroom

LOCATION

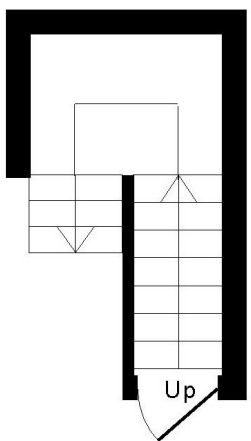
Set well up and back from the road, the house is most conveniently located just a very short walk from Hedgemoad Park, Milsom Street and the countless shops and amenities in the city centre.



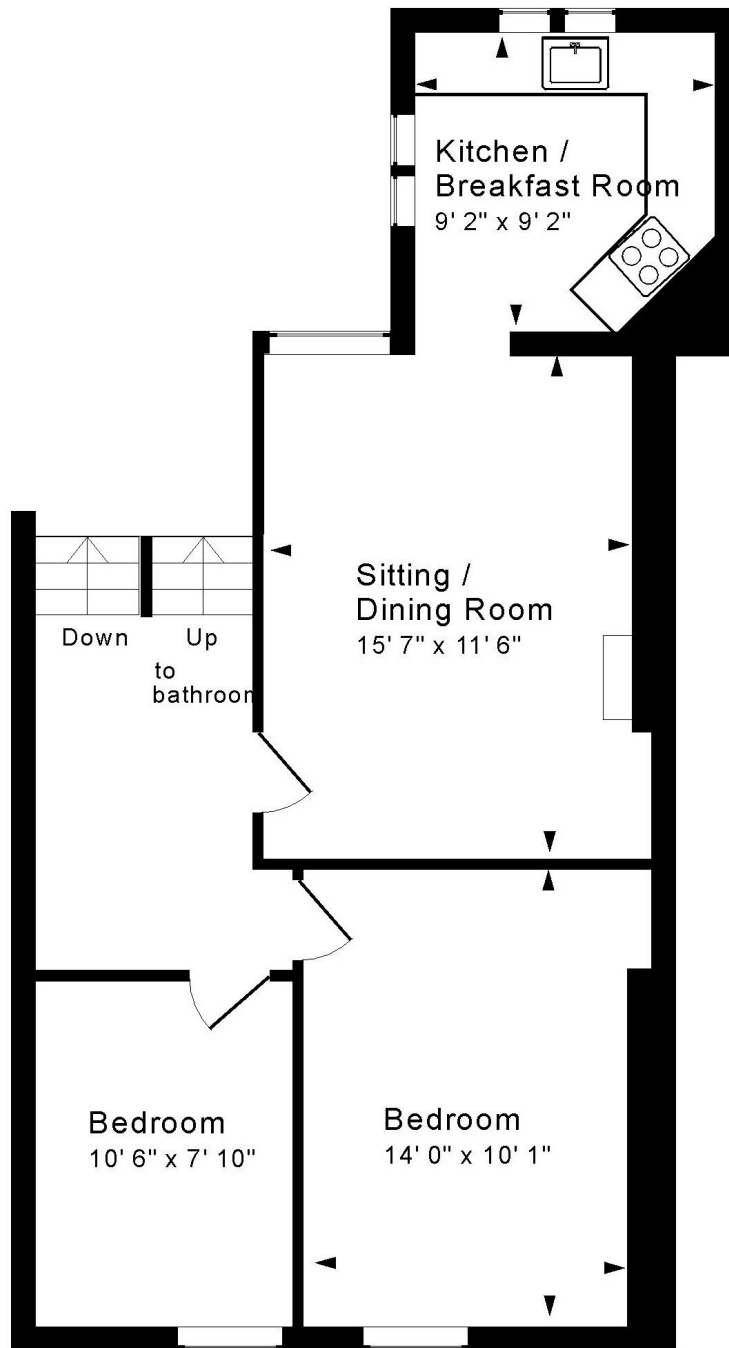




Mezzanine

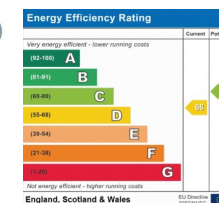


Second Floor



Top Floor

Approx. Gross Internal Floor Area 690 Sq. Ft. / 64 Sq. M
 Includes Conservatories. Excludes Garages, Porches etc. unless stated
 For identification purposes only. Not to scale. Copyright Jemesis Ltd 2026
 Drawing Number:172-0879
 Flat 5, 15 Vineyards, Bath, BA1 5NA.



Tenure: Share of freehold
Council Tax Band: 'B' = £1,722.41
Service Charge: £149 PCM