



*Jordan fishwick*

ALTRINCHAM  
Primrose Bank



# Primrose Bank, Altrincham, WA14 3EW

Asking Price £379,950



## The Property

NO ONWARD CHAIN - Jordan Fishwick are proud to present for sale this excellent opportunity to purchase a fantastic three bedroom mid terraced home. Located in the heart of Bowdon village this property is only a short walk to local amenities and within easy reach of Altrincham and Hale, as well as motorway links. The property has undergone renovations and modernised throughout in the last few years.

In brief the property boasts a porch which access the entrance hall, which leads into both the lounge diner and separate kitchen. The modern kitchen provides access to a rear conservatory which has potential to be converted into a utility room.

To the first floor there are three bedrooms, which include two double rooms and a modern family bathroom.

Externally and to the rear, the garden has been flagged and is fully enclosed with the addition of a brick built outbuilding. To the front there is flagged off road parking, with access to the rear via a shared ginnel.

Viewings are strongly advised to appreciate this fantastic first time buyer opportunity.

## Directions

WA14 3EW



- No onward chain
- Three bedrooms
- Off road parking
- Freehold
- Flagged rear garden
- Close to local amenities
- Lounge Diner
- Modernised throughout
- Modern kitchen and bathroom

Postcode - WA14 3EW

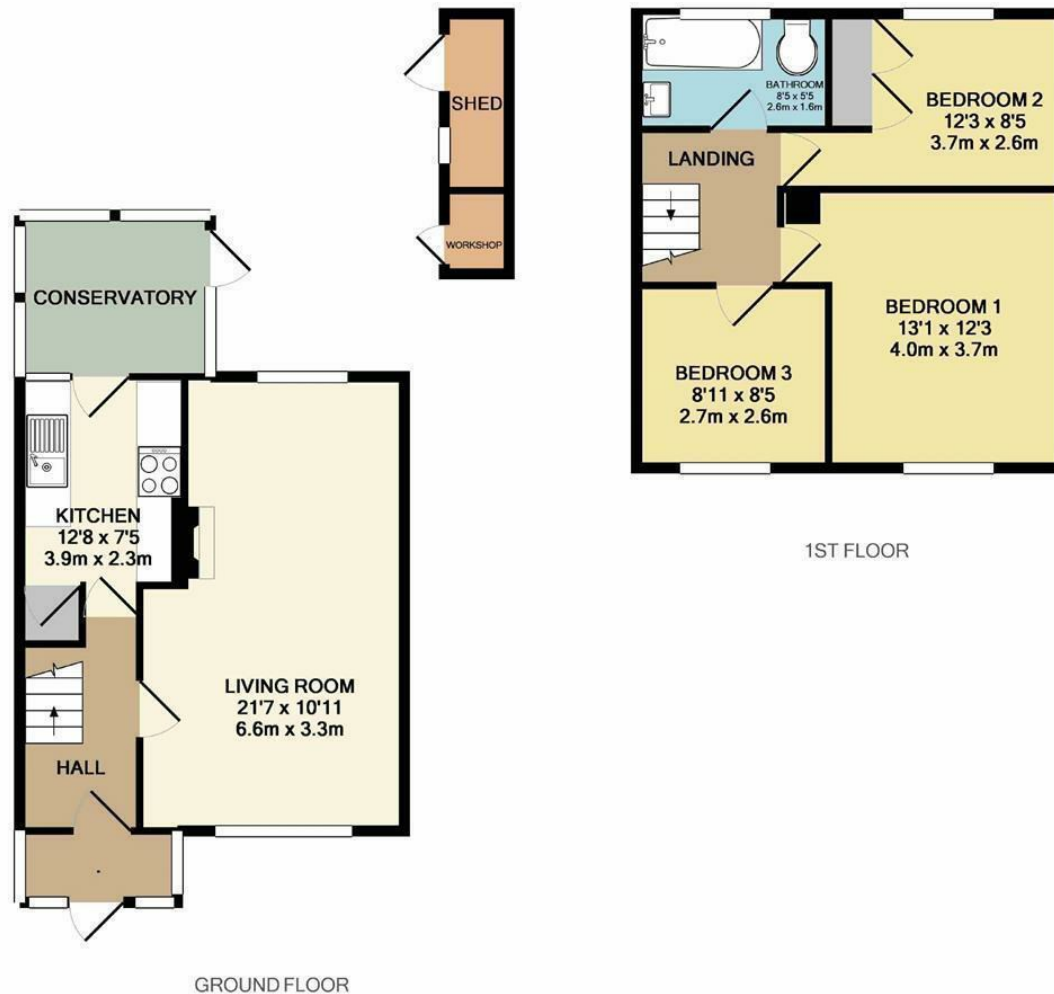
EPC Rating - D

Floor Area - 721.00 sq ft

Local Authority - TRAFFORD

Council Tax - A





TOTAL APPROX. FLOOR AREA 721 SQ.FT. (67.0 SQ.M.)

Whilst every attempt has been made to ensure the accuracy of the floor plan contained here, measurements of doors, windows, rooms and any other items are approximate and no responsibility is taken for any error, omission, or mis-statement. This plan is for illustrative purposes only and should be used as such by any prospective purchaser. The services, systems and appliances shown have not been tested and no guarantee as to their operability or efficiency can be given  
 Made with Metropix ©2019



These particulars are believed to be accurate but they are not guaranteed and do not form a contract. Neither Jordan Fishwick nor the vendor or lessor accept any responsibility in respect of these particulars, which are not intended to be statements or representations of fact and any intending purchaser or lessee must satisfy himself by inspection or otherwise as to the correctness of each of the statements contained in these particulars. Any floorplans on this brochure are for illustrative purposes only and are not necessarily to scale.

Offices at: Chorlton, Didsbury, Disley, Hale, Glossop, Macclesfield, Manchester Deansgate, Manchester Whitworth Street, New Mills, Sale, Wilmslow and Withington

0161 929 9797

hale@jordanfishwick.co.uk  
 www.jordanfishwick.co.uk