



Connells

Canterbury Road
Penn Wolverhampton

Canterbury Road Penn Wolverhampton WV4 4EH

for sale offers over
£280,000



Property Description

Connells Wolverhampton offer for sale this traditional three bedroom home in Penn.

Ground floor offers two reception rooms, kitchen entrance hallway.

First floor offers three bedrooms family bathroom & loft access.

Externally the property has a generous rear garden, front garden & driveway.

The property also has a garage/store room to side offering multi purpose use.

Location And Area

Situated in the ever popular area of Penn with an abundance of local schooling and fantastic commuting access to Wolverhampton City centre. There are a wonderful selection of local shopping just a stone's throw away.

Entrance Hall

Wooden single glazed door to front, single glazed stained glass windows to front, central heated radiator, laminate flooring, stairs to first floor landing, understairs storage cupboard.

Lounge

Double glazed bay window to front, central heated radiator, laminate flooring.

Dining Room

Double glazed window to rear, door to garden, central heated radiator.

Kitchen

Three double glazed window to rear and side, wooden door to garden, wall and base units, worksurfaces with sink drainer, understairs storage cupboard, complimentary tiling, tiled floor, central heated radiator, gas hob and electric oven, spotlights.



First Floor Landing

Doors to various rooms, glazed window to side, loft access.

Bedroom One

Double glazed bay window to front, central heated radiator.

Bedroom Two

Double glazed window, central heated radiator.

Bedroom Three

Double glazed window to front, central heated radiator.

Bathroom

Double glazed window to rear, central heated radiator, wash hand basin, wall and floor tiling, wall mounted central heated boiler, bath with shower over, low level wc.

Outside Front

Lawned area, driveway.

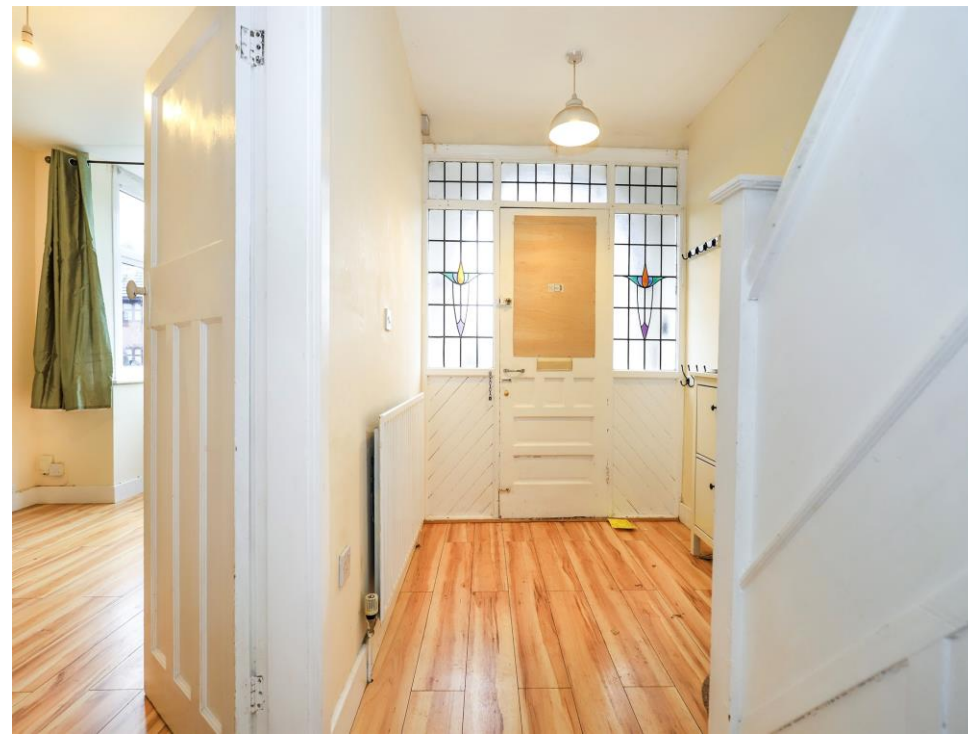
Outside Rear

Generous size, lawned area, patio.

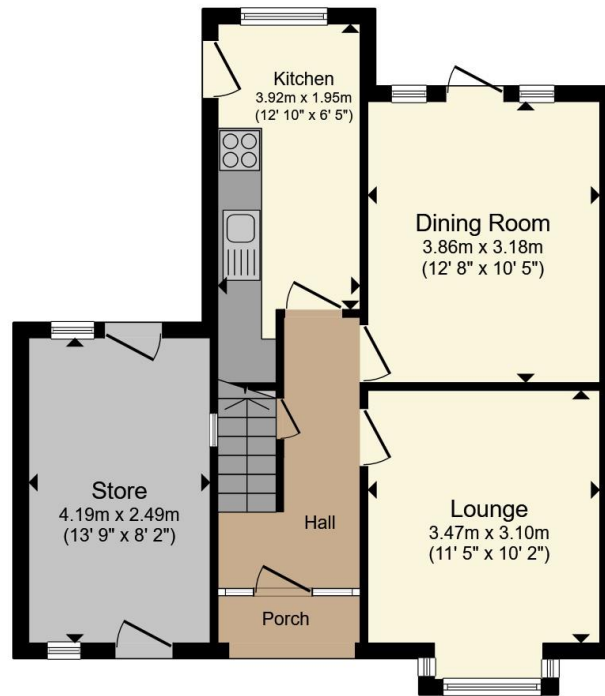
Store

Access from rear garden.

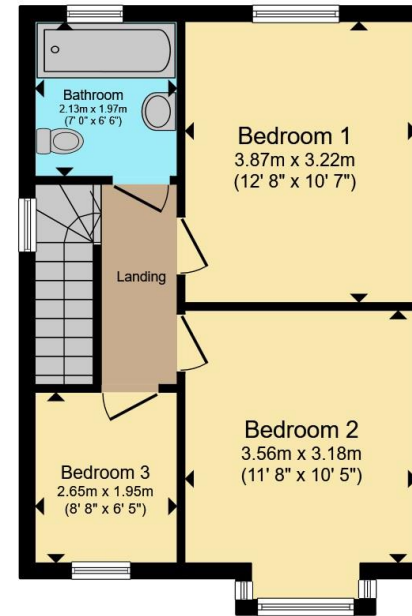








Ground Floor



First Floor

Total floor area 92.1 m² (992 sq.ft.) approx

This floor plan is for illustrative purposes only. It is not drawn to scale. Any measurements, floor areas (including any total floor area), openings and orientation are approximate. No details are guaranteed, they cannot be relied upon for any purpose and they do not form part of any agreement. No liability is taken for any error, omission or misstatement. A party must rely upon its own inspection(s). Powered by www.propertybox.io

Connells

To view this property please contact Connells on

T 01902 710 170
E wolverhampton@connells.co.uk

81-83 Darlington Street
WOLVERHAMPTON WV1 4EX

EPC Rating: D Council Tax
Band: D

Tenure: Freehold

view this property online connells.co.uk/Property/WVH334501



1. MONEY LAUNDERING REGULATIONS Intending purchasers will be asked to produce identification documentation at a later stage and we would ask for your co-operation in order that there will be no delay in agreeing the sale. 2. These particulars do not constitute part or all of an offer or contract. 3. The measurements indicated are supplied for guidance only and as such must be considered incorrect. Potential buyers are advised to recheck measurements before committing to any expense. 4. We have not tested any apparatus, equipment, fixtures, fittings or services and it is in the buyers interest to check the working condition of any appliances.

Connells Residential is registered in England and Wales under company number 1489613, Registered Office is Cumbria House, 16-20 Hockliffe Street, Leighton Buzzard, Bedfordshire, LU7 1GN. VAT Registration Number is 500 2481 05.

See all our properties at www.connells.co.uk | www.rightmove.co.uk | www.zoopla.co.uk

Property Ref: WVH334501 - 0002