



Canford Gardens, KT3

£675,000

Offered to the market with no onward chain, this 1940s semi detached family home is arranged over two floors and includes a versatile ground floor bedroom/study. The property occupies a larger than average corner plot with a substantial private garden and a double garage. Offering huge potential to update, remodel and extend (subject to the usual planning consents), this is a rare opportunity for buyers to create a home tailored to their own taste and specification.

Canford Gardens is a peaceful cul-de-sac providing easy access to the A3 as well as New Malden and Malden Manor Train Stations. The home is also within walking distance to Richard Challoner School and Malden Manor

Features

- Link Detached
- Two / Three Bedrooms
- Double Garage Plot
- Off-Street Parking
- Large Garden
- Potential To Extend STPP
- Excellent Location



Canford Gardens, KT3

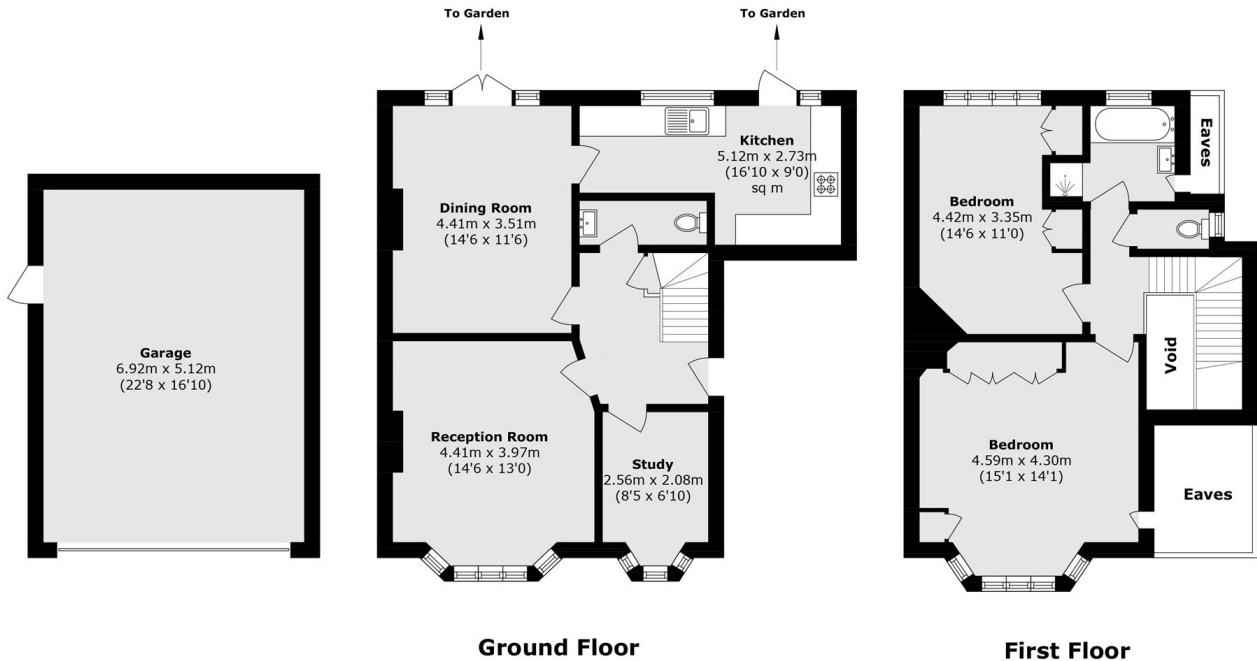
You enter onto a generous hall way with a very good sized reception with a lovely bay and feature fireplace. Further off the hallway is a good sized dining room that looks out onto a very large manicured private back garden. The kitchen is light and bright, it has been extended and sits just off the dining room. There is also a downstairs WC as well as the third bedroom/home office.

On the first floor there is a very generous master bedroom with built in storage and a separate storage area with a window. There is another generous second double bedroom towards the back overlooking the garden, there is also a family bathroom and a separate WC.

Towards the front there is a double garage and an extremely large driveway, towards the back there is a lovely large manicured garden. The house offer lots of potential to extend STPP.



Canford Gardens, New Malden, KT3



Total area (approx): 106.4 sq. m (1145.2 sq. ft)
(Excluding Eaves and Void)

Garage area (approx): 35.4 sq. m (381.0 sq. ft)