






WATERLANE COTTAGE

22 Purton Stoke, Swindon, Wiltshire, SN5



WATERLANE COTTAGE, 22 PURTON STOKE

A fabulously located period cottage situated on the edge of the village
with open country views.

			EPC
4	2	4	D

Local Authority: Wiltshire Council
Council Tax band: G
Tenure: Freehold

Distances: Royal Wotton Bassett 7 miles, Swindon 8 miles, Cirencester 12 miles, Tetbury 17 miles, Bristol 42 miles, London 88 miles (all distances are approximate).

Postcode: SN5 4JF What3Words: ///elevates.surfacing.eating

Guide price: £875,000

THE PROPERTY AND LOCATION

Water Lane Cottage has been a wonderful family home for many years.

The house briefly comprises a spacious entrance hall, dining room, sitting room, study and kitchen breakfast room. There is an exceptional full height oak framed garden room with exceptional views over the private gardens. On the first floor is the principal bedroom with walk in wardrobe and en suite bath with shower room. The landing links three further bedrooms and family bathroom.

Externally there is expansive gravel parking in front of the spacious garage workshop with woodstore. The gardens are predominantly to the south and west and are easily managed with a fine lawn, orchard, flower border and garden buildings including a lovely breeze hut with view across the garden and over the adjoining fields. An infant stream starts at the bottom of the garden.

Waterlane Cottage is situated at the end of a no through track on the edge of a desirable country village of Purton Stoke, which has a popular pub, The Bell and village hall. The neighbouring village of Purton has services for every day needs. The local centres of Royal Wotton Bassett, Cricklade, Swindon and Cirencester are easily accessible. Communications in the area are exceptional with the M4 J16 (about 8 miles). Direct trains available from Swindon station to London Paddington (about 60 minutes). Education is extremely good with schools locally in Purton, Cricklade, Wotton Bassett.



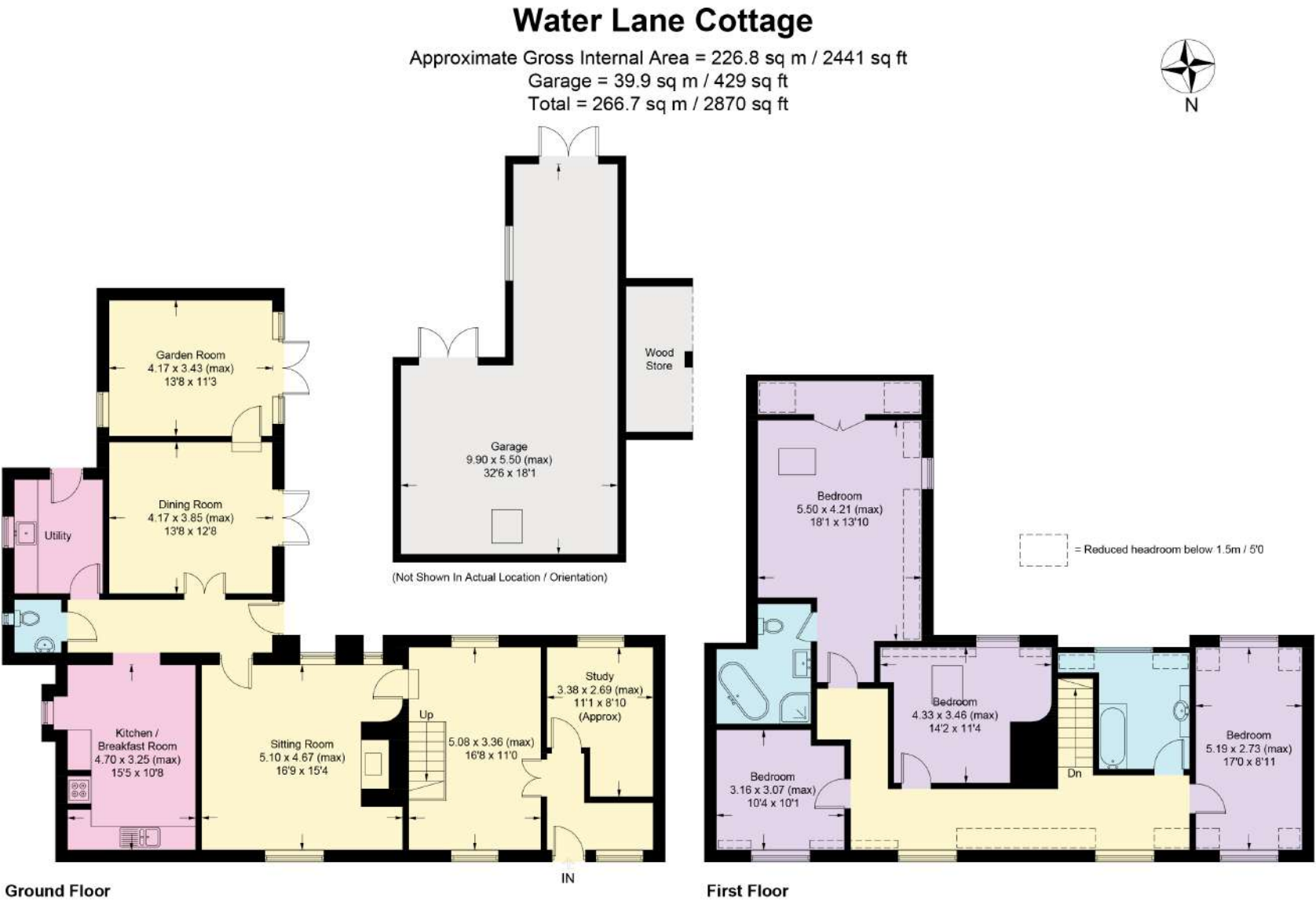


Illustration for identification purposes only,
measurements are approximate, not to scale. (ID966768)

This plan is for layout guidance only. Not drawn to scale unless stated. Windows and door openings are approximate. Whilst every care is taken in the preparation of this plan, please check all dimensions, shapes and compass bearings before making any decisions reliant upon them. (ID767266)



Harry Pearson
01285 882003
harry.pearson@knightfrank.com

Knight Frank Cirencester
One Market Place
GL7 2PE

[knightfrank.co.uk](https://www.knightfrank.co.uk)

Your partners in property

1. Particulars: These particulars are not an offer or contract, nor part of one. You should not rely on statements given by Knight Frank in the particulars, by word of mouth or in writing ("information") as being factually accurate about the property, its condition or its value. Neither Knight Frank nor any joint agent has any authority to make any representations about the property, and accordingly any information given is entirely without responsibility on the part of Knight Frank. 2. Material Information: Please note that the material information is provided to Knight Frank by third parties and is provided here as a guide only. While Knight Frank has taken steps to verify this information, we advise you to confirm the details of any such material information prior to any offer being submitted. If we are informed of changes to this information by the seller or another third party, we will use reasonable endeavours to update this as soon as practical. 3. Photos, Videos etc: The photographs, property videos and virtual viewings etc. show only certain parts of the property as they appeared at the time they were taken. Areas, measurements and distances given are approximate only. 4. Regulations etc: Any reference to alterations to, or use of, any part of the property does not mean that any necessary planning, building regulations or other consent has been obtained. A buyer must find out by inspection or in other ways that these matters have been properly dealt with and that all information is correct. 5. Fixtures and fittings: A list of the fitted carpets, curtains, light fittings and other items fixed to the property which are included in the sale (or may be available by separate negotiation) will be provided by the Seller's Solicitors. 6. VAT: The VAT position relating to the property may change without notice. 7. To find out how we process Personal Data, please refer to our Group Privacy Statement and other notices at <https://www.knightfrank.com/legals/privacy-statement>.

Particulars dated July 2025. Photographs and videos dated June 2023. All information is correct at the time of going to print. Knight Frank is the trading name of Knight Frank LLP. Knight Frank LLP is a limited liability partnership registered in England and Wales with registered number OC305934. Our registered office is at 55 Baker Street, London W1U 8AN. We use the term 'partner' to refer to a member of Knight Frank LLP or an employee or consultant. A list of members names of Knight Frank LLP may be inspected at our registered office. If you do not want us to contact you further about our services then please contact us by either calling 020 3544 0692, email to marketing.help@knightfrank.com or post to our UK Residential Marketing Manager at our registered office (above) providing your name and address.

