



**Guide Price**  
**£285,000**

**Leasehold**

2x  1x  1x 

**Forester Lodge, Lorimer  
Avenue, Cranleigh,  
Surrey, GU6**

**cubitt & west**  
Helping you move forwards



## Main features

- A well presented ground floor flat
- Shared Ownership - price equates to 100% share (minimum of 25% available)
- Bright open plan living area
- Allocated parking and communal gardens
- Within walking distance to Cranleigh amenities and stunning country park

## Accommodation

### GROUND FLOOR

Entrance Hallway

Lounge: 13'7 x 13'6 (4.14m x 4.12m)

Kitchen: 13'8 x 8'6 (4.17m x 2.59m)

Bedroom 1: 12'1 x 10'4 (3.69m x 3.15m)

Bedroom 2: 16'6 x 8'6 (5.03m x 2.59m)

Bathroom

### OUTSIDE

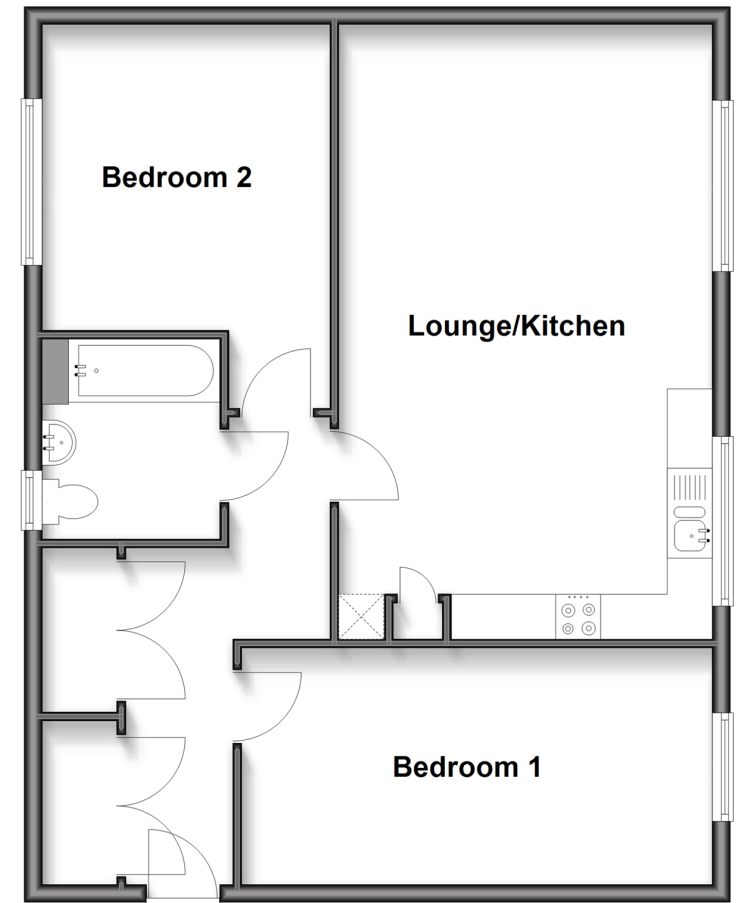
Two Allocated Parking Spaces

Communal Grounds

Communal Bike Store

## Ground Floor

Approx. 71.2 sq. metres (765.9 sq. feet)



**Call Cranleigh - 01483 271567 ■ [cubittandwest.co.uk](http://cubittandwest.co.uk)**

- Legal advice should be taken to verify fixtures/fittings, planning, alterations and/or lease details
- Appliances & services are untested, dimensions are approximate and floor plans are not to scale



20306948/20260123/CH/KAB