



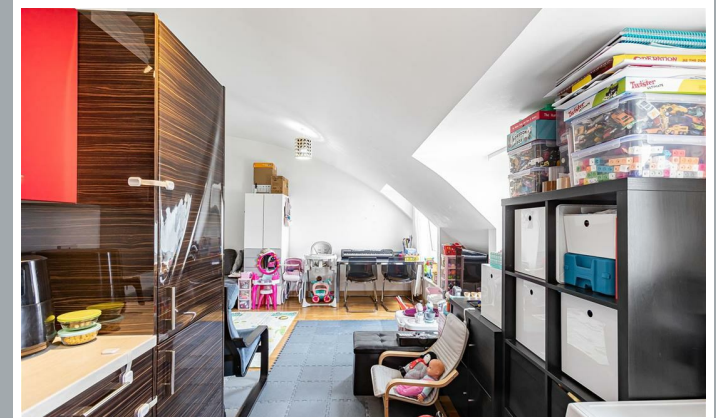
113 Elder Court, Mead Lane, Hertford

SG13 7FZ

Price Guide £230,000



[stevenoates.com](http://stevenoates.com)



## 113 Elder Court Mead Lane, Hertford, SG13 7FZ

**\*\*LEASE BEING EXTENDED, ZERO GROUND RENT\*\***

Located in a highly sought-after modern development, this spacious one-bedroom top floor apartment offers contemporary living in an exceptionally convenient position, just moments from Hertford East Train Station and the vibrant town centre. The property boasts a bright and generously sized living room, providing ample space for both relaxing and entertaining. The modern fitted kitchen is well-appointed with a range of units and integrated appliances. The large double bedroom benefits from fitted wardrobes and a private en-suite bathroom, while a separate WC accessed from the hallway adds further convenience for guests. Externally, residents enjoy well-maintained communal areas, lift access to all floors, and the added benefit of secure underground parking. This superb apartment is ideal for first-time buyers, commuters, or investors alike, offering a fantastic blend of space, style, and location in the heart of Hertford.

Ideally positioned in the heart of Hertford, the property enjoys a great location just moments from Hertford East railway station, making it perfect for commuters with direct links into London. The apartment is also within immediate walking distance of Hertford's charming town centre, which offers a wide range of independent shops, popular restaurants, cafés, and bars. For outdoor enthusiasts, there are scenic riverside walks along the River Lea and River Beane, along with several nearby green spaces and parks like Hartham Common. Hertford also benefits from excellent road connections via the A10 and A414, providing easy access to surrounding towns and the wider motorway network.



70 Fore Street, Hertford, Hertfordshire, SG14 1BY



70 Fore Street, Hertford, Hertfordshire, SG14 1BY



70 Fore Street, Hertford, Hertfordshire, SG14 1BY



70 Fore Street, Hertford, Hertfordshire, SG14 1BY

**Approximate Gross Internal Area 603 sq ft - 56 sq m**



Third Floor

These particulars, whilst believed to be accurate are set out as a general outline only for guidance and do not constitute any part of an offer or contract. Intending purchasers should not rely on them as statements of representation of fact, but must satisfy themselves by inspection or otherwise as to their accuracy. No person in this firm's employment has the authority to make or give any representation or warranty in respect of the property.



stevengoates.com