



370 Croft Road, Nuneaton – CV10 7DY
£120,000

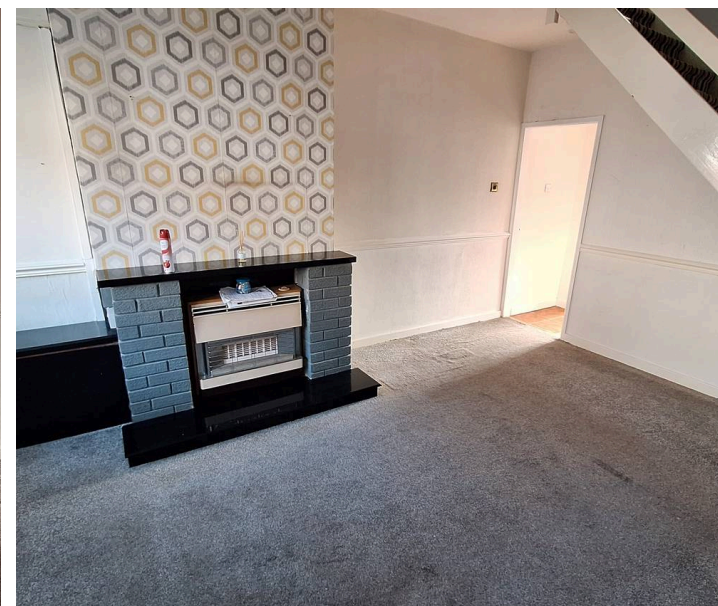


370 Croft Road

Nuneaton

- Two Bedrooms
- Lounge
- Kitchen/Diner
- Bathroom
- Garden
- No Chain
- Freehold
- EPC D (65)
- Council Tax Band A

This two bedroom terraced house is situated in convenient location with easy access to the local shops and amenities. The accommodation features: Entrance Porch, Lounge, Kitchen/diner, Two Bedrooms & Bathroom, garden to the rear. The property is offered with no onward chain.



Accommodation Comprises

On the Ground Floor

Entrance Porch

Double glazed door to front, door to lounge.

Lounge

Double glazed window to front, gas fire, stairs to first floor, door to kitchen.

Kitchen

Double glazed window to rear, range of wall and base unit cupboards and drawers, single bowl stainless steel sink and drainer, space for fridge/freezer, plumbing for washing machine, cooker point, radiator, double glazed door to rear garden.

On the First floor

Bedroom One

Double glazed window to front, radiator.

Bedroom Two

Double glazed window to rear, radiator.

Bathroom

Opaque double glazed window to rear, panelled bath with electric shower, low level WC, wash hand basin.

Garden

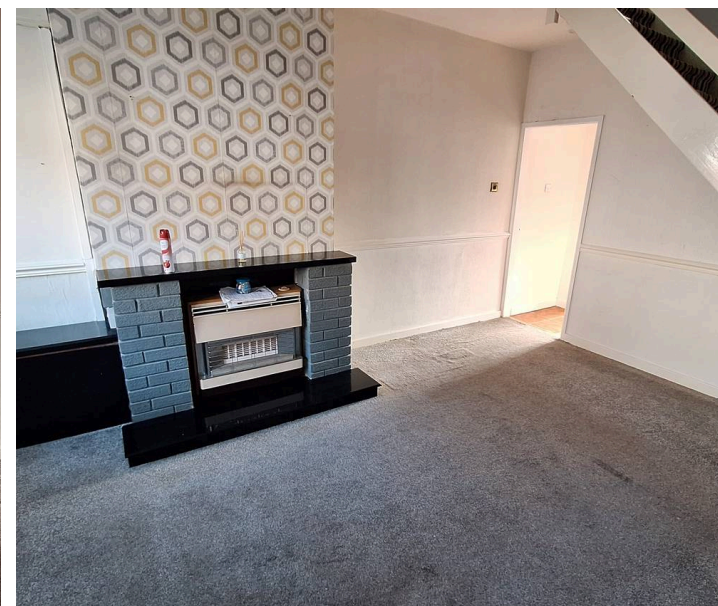
Easy maintenance garden enclosed by timber fence boundary.

Services

We believe all mains services are connected to the property (not tested).

Special Notes

We have not tested the equipment, appliances, and services in this property. Interested applicants are advised to commission the appropriate investigations before formulating their offer to purchase. The measurements are supplied for guidance only. Only those items mentioned in these sales particulars are included in the



Accommodation Comprises

On the Ground Floor

Entrance Porch

Double glazed door to front, door to lounge.

Lounge

Double glazed window to front, gas fire, stairs to first floor, door to kitchen.

Kitchen

Double glazed window to rear, range of wall and base unit cupboards and drawers, single bowl stainless steel sink and drainer, space for fridge/freezer, plumbing for washing machine, cooker point, radiator, double glazed door to rear garden.

On the First floor

Bedroom One

Double glazed window to front, radiator.

Bedroom Two

Double glazed window to rear, radiator.

Bathroom

Opaque double glazed window to rear, panelled bath with electric shower, low level WC, wash hand basin.

Garden

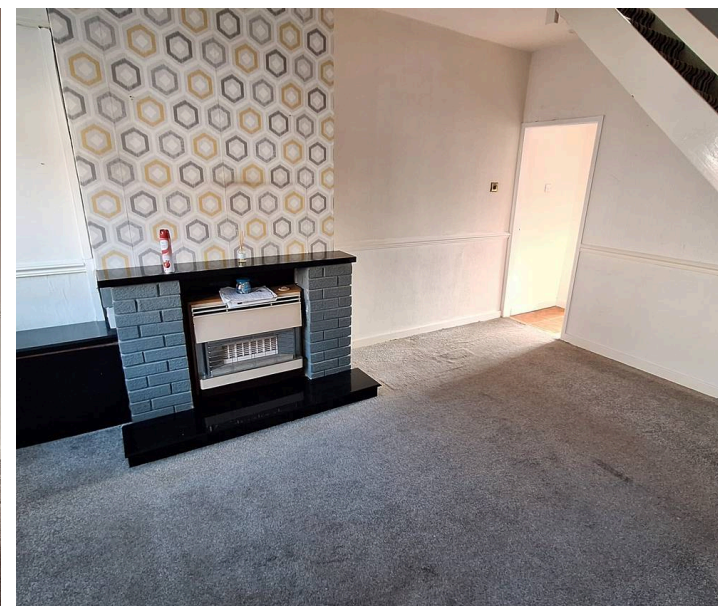
Easy maintenance garden enclosed by timber fence boundary.

Services

We believe all mains services are connected to the property (not tested).

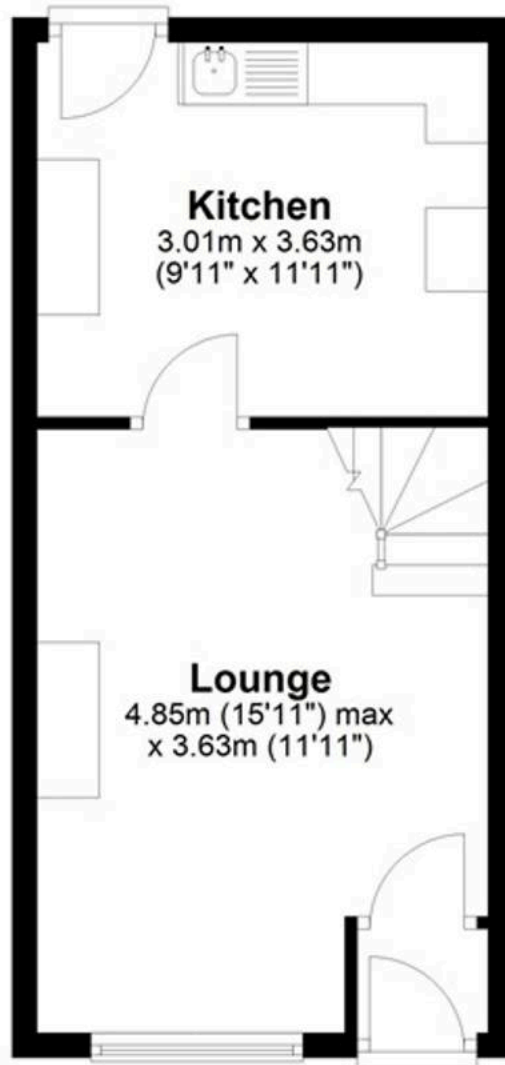
Special Notes

We have not tested the equipment, appliances, and services in this property. Interested applicants are advised to commission the appropriate investigations before formulating their offer to purchase. The measurements are supplied for guidance only. Only those items mentioned in these sales particulars are included in the



Ground Floor

Approx. 28.9 sq. metres (311.1 sq. feet)



First Floor

Approx. 29.0 sq. metres (312.4 sq. feet)



Total area: approx. 57.9 sq. metres (623.5 sq. feet)

For illustrative purposes only. Whilst every attempt has been made to ensure the plan is accurate and presents the property in the best way, measurements of doors, windows and rooms are approximate and no responsibility is taken for any error, omission or mis-statement

Special Notes

We have not tested the equipment, appliances, and services in this property. Interested applicants are advised to commission the appropriate investigations before formulating their offer to purchase. The measurements are supplied for guidance only. Only those items mentioned in these sales particulars are included in the sale. Ask agent regarding Rights & Restrictions. If you require the full EPC certificate, please contact us and we will email the EPC certificate to you.

Money Laundering

We have in place procedures and controls, which are designed to forestall and prevent Money Laundering. If we suspect that a supplier, customer/client, or employee is committing a Money Laundering offence as defined by the Proceeds of Crime Act 2002, we will in accordance with our legal responsibilities disclose the suspicion to the National Crime Intelligence Service. Intending purchasers will be asked to produce identification documentation at a later stage and we would ask for your co-operation in order that there will be no delay in agreeing the sale.

Disclaimer

Cartwright Hands for themselves and the vendors of the property, whose agents they are given notice that these particulars, although believed to be correct, do not constitute any part of an offer or contract, that all statements contained in these particulars as to this property, are made without responsibility and are not to be upon as stateresentation of fact that they do not make or give any representation or warranty whatsoever in relation to this property. An intending purchaser must satisfy himself by inspection or otherwise as to the correctness of each of the statements contained in these particulars. With regard to appliances and electrical installations, none of the items detailed have been tested and prospective purchasers should satisfy themselves with regard to their condition.

cartwright
hands

Telephone: 02476 350 700
Email: sales@cartwriighthands.co.uk
59 Coton Road, Nuneaton, CV11 5TS

1. MONEY LAUNDERING REGULATIONS Intending purchasers will be asked to produce identification documentation at a later stage and we would ask for your co-operation in order that there will no delay in agreeing the sale. 2. These particulars do not constate part or all of an offer or contract. 3. The measurements indicated are supplied for guidance only and as such must be considered incorrect. Potential buyers are advised to recheck measurements before committing to any expense. 4. We have not tested any apparatus, equipment, fixtures, fittings or services and it is in the buyers interest to check the working condition of any appliances.