



Belgrave Mansions

Belgrave Gardens, NW8

£2,750 per month
(£634.62 per week)

Refurbished raised ground floor apartment with wood floors set within a mansion building on a beautiful tree lined street

CHESTERTONS



Belgrave Mansions

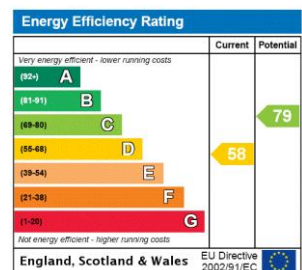
Belgrave Gardens, NW8

- Mansion Building
- 2 Double Bedrooms
- 1 Bathroom
- Close to St Johns Wood Tube (Jubilee Line)



Charming raised ground floor 2 bedroom apartment set within a mansion building on a beautiful tree lined street. The property has recently been refurbished to a high standard with wood floors throughout, whilst retaining period features. Property comprises; large reception room with floor to ceiling bay windows, 2 large double bedrooms with fitted storage, fully fitted modern kitchen and modern bathroom. Close to St Johns Wood High Street and Tube (Jubilee Line).

Minimum Term: 12 months
Deposit Required: £3,173.08
Local Authority:
Council Tax Band:
EPC Rating: C
Unfurnished



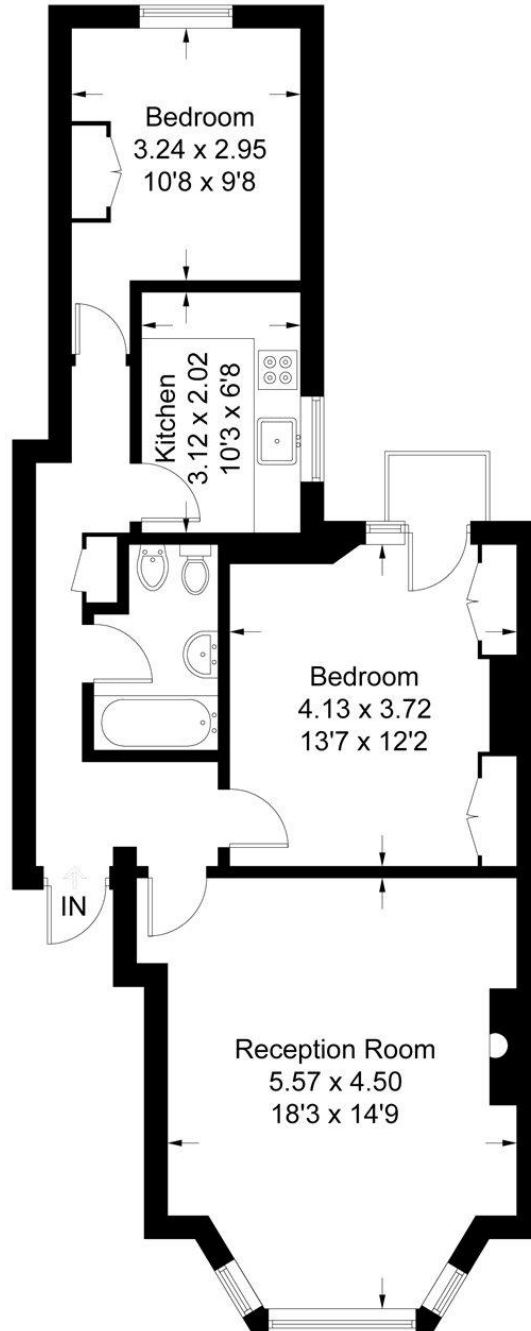
Chestertons St John's Wood Lettings

105 St. John's Wood Terrace
 London
 NW8 6PL
 stjohslettingsusers@chestertons.co.uk
 02030408622
 chestertons.co.uk

Additional tenant charges apply (fees apply to non-AST tenancies only)
 Tenancy Agreement Fee: £300
 References per Tenant/Guarantor: £60
 Inventory check (approx. £100 – £250 inc. VAT)
 chestertons.co.uk/property-to-rent/applicable-fees

Belgrave Mansions

Approximate Gross Internal Area = 70.1 sq m / 754 sq ft



Ground Floor

Illustration for identification purposes only, measurements are approximate, not to scale. FloorplansUsketch.com © 2015 (ID213741)