



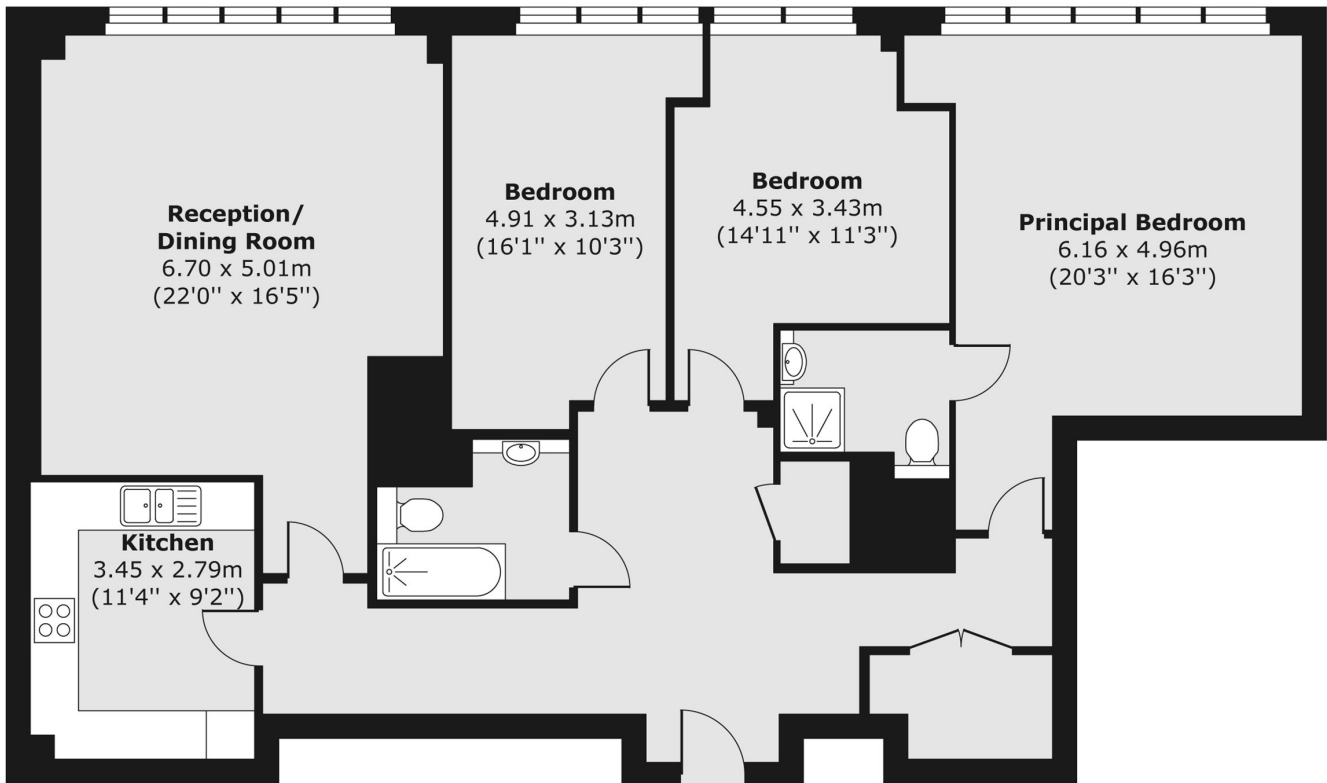
Heathcroft, W5

£715 pw (£3,100 pcm)

A well-presented three double bedroom apartment, with wood flooring throughout, separate modern kitchen, two bathrooms, access to resident's gym and off-street parking.

Situated moments from Park Royal train station (Piccadilly Line) and the A40 for drivers. This property offers great transport links into Central London.

Third Floor



Total area (approx.) 125.07 sq. m (1,346 sq. ft)

Robertson Smith & Kempson Ealing Lettings
1 The Broadway,
London, W5 2NT
020 8840 7885
ealinglettings@robertsonsmithandkempson.co.uk

Energy Rating: C. We aim to make our particulars both accurate and reliable. However they are not guaranteed; nor do they form part of an offer or contract. If you require clarification on any points then please contact us, especially if you're traveling some distance to view. Please note that appliances and heating systems have not been tested and therefore no warranties can be given as to their good working order.