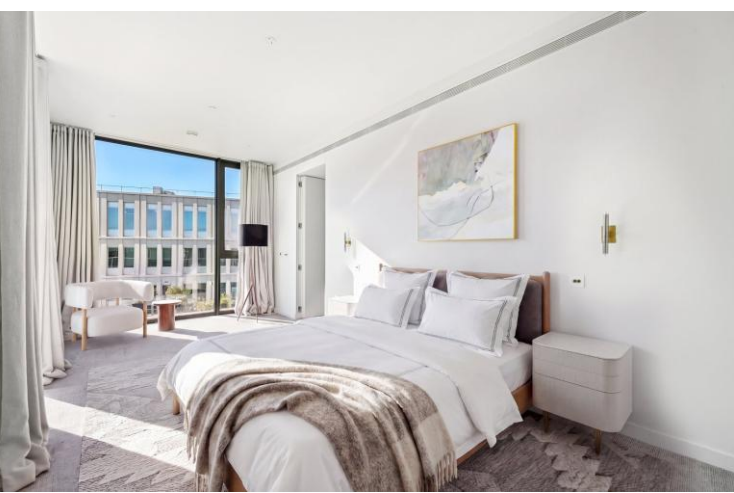




Wood Crescent
London, W12

CHESTERTONS





An exceptional three bedroom penthouse apartment with breathtaking views, located within the iconic Television Centre development in the heart of White City.

Extending to approximately 2,197 sq ft, this beautifully designed lateral home offers outstanding living space, abundant natural light, and three private terraces, perfect for both relaxing and entertaining. The impressive open plan reception features dual aspect floor to ceiling windows and direct access to terraces overlooking Hammersmith Park.

All three bedrooms are generously sized with stylish ensuite bathrooms, while two benefit from walk in wardrobes. The bespoke kitchen is fitted with Miele appliances, a breakfast bar, and a separate utility room. A striking skylit walkway enhances the sense of space and design throughout.

Finished to an exceptional standard, the apartment features high ceilings, underfloor heating, and comfort cooling.

Further benefits include:

- Three underground parking spaces
- 24-hour concierge service
- Access to White City House gym and swimming pool
- Private cinema, residents' lounge & landscaped gardens
- Exclusive Soho House facilities & membership benefits

Ideally located moments from Westfield Shopping Centre, with a superb selection of shops, restaurants, and entertainment. Excellent transport links via White City and Wood Lane stations, providing easy access across London.

Please note the photos have been virtually staged.

- Top-floor lateral penthouse
- Three bedrooms, all en suite (two with walk in wardrobes)
- Three private terraces
- Great views
- 24-hour concierge & Soho House gym/pool access
- Three underground parking spaces

Asking Price £3,000,000

Score	Energy rating	Current	Potential
92+	A		
81-91	B		
69-80	C	74 C	74 C
55-68	D		
39-54	E		
21-38	F		
1-20	G		

Tenure: Leasehold 966 years 5 months
Service Charge: £25,862 pa
Ground Rent: £1,000 pa
Local Authority: Hammersmith & Fulham
Council Tax Band: H

Chestertons Notting Hill Sales

30 Ledbury Road
 Notting Hill
 London
 W11 2AB

nottinghill@chestertons.co.uk
 0203 040 8585

Wood Crescent, W12
 Approximate Gross Internal Area
 204.08 sq m / 2,197 sq ft

(CH = Ceiling Heights)



Eighth Floor



This plan is not to a given scale. A detailed layout plan to scale for valuation is available on request. All measurements and areas are within 1% tolerance and have been prepared in accordance with industry standards as defined in the RICS Code of Measuring Practice.
 © Fulham Performance

Chesterton UK Services Limited trading as Chestertons for themselves and for the vendor of this property whose agents they are, give notice that (i) these particulars do not constitute any part of an offer or contract, (ii) all statements contained within these particulars are made without responsibility on the part of Chestertons or the vendor, (iii) whilst made in good faith, none of the statements contained within these particulars are to be relied upon as a statement or representation of fact, (iv) any intending purchasers must satisfy themselves by inspection or otherwise as to the correctness of each of the statements contained within these particulars, (v) the vendor does not make or give either Chestertons or any person in their employment any authority to make or give representation or warranty whatsoever in relation to this property. Wide angle lenses may be used. ©Copyright Chestertons | Chesterton UK Services Limited | Registered Office 5th Floor, The Lantern, 75 Hampstead Road, London, NW1 2PL Registered Company Number 05334580.



This paper is
 100% recyclable