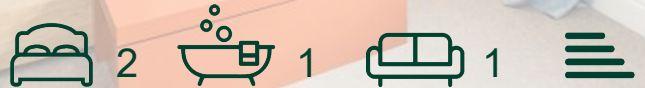




Oaklands Grove,
Shepherds Bush, W12

£2,150 Per Month



Oaklands Grove, Shepherds Bush, W12

£2,150 Per Month



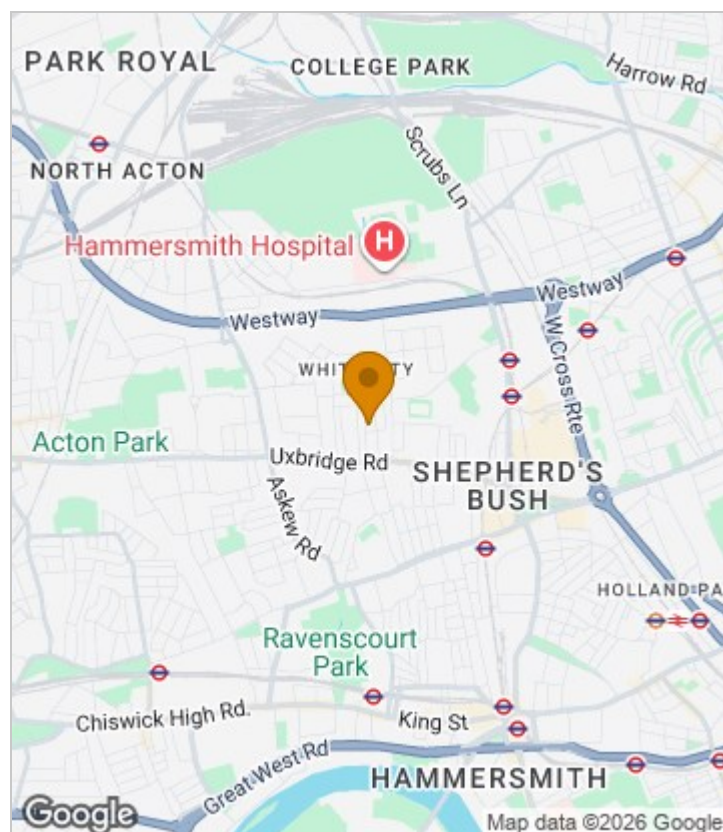
Summary Description

**** NEW TO THE MARKET**** Jorgensen Turner estate agents Shepherds Bush is very proud to present this two double bedroom first floor maisonette. The flat comprises; a modern and bright open-plan kitchen and reception room, two very good sized double bedrooms, a contemporary bathroom and access to a small patio garden.

The location is well-served by a number of excellent independent shops, coffee shops (Proud Mary's), bars and pubs (The Hawthorn) along the Uxbridge Road. Transport wise the property is well served by the Central Line (White City & Shepherds Bush), the Circle Line & Hammersmith & City Line (Shepherds Bush Market and Wood Lane) and London Overground (Shepherds Bush). The Westfield shopping centre is also only a short walk away from the property offering every retail store you could wish for. For the motorist the A4 and A40 are close by for easy access out to the West and North West of London.

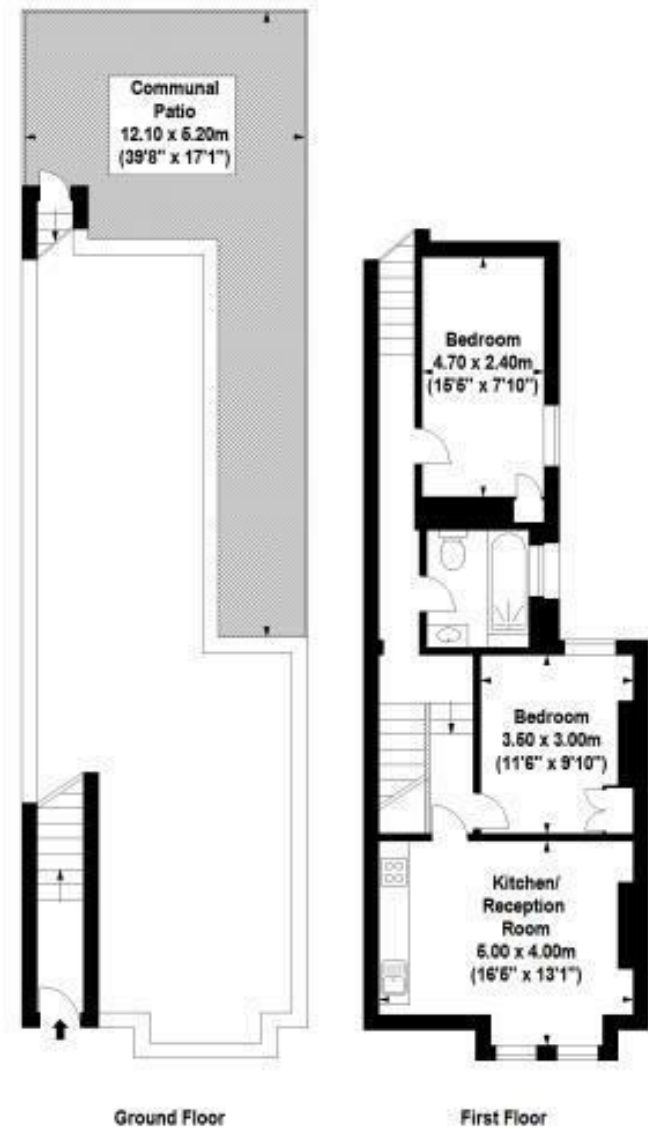
Offered to the market furnished and available 9th of June, early viewings are highly recommended.

Area Map





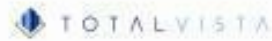
Floor Plan



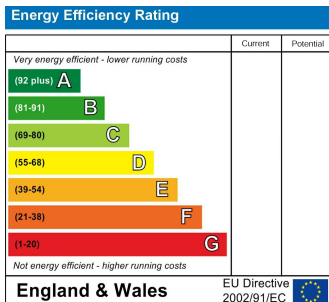
For Identification Purposes Only. Not To Scale. © www.alanaiken.com 2016

Oaklands Grove, W12

Approx. Gross Internal Area
65.87 Sq M - 709 Sq Ft



Energy Efficiency Graph



Viewing

Please contact our Lettings SB Office on 0208 740 8740 if you wish to arrange a viewing appointment for this property or require further information.

- Two double bedrooms
- Part- Furnished
- Walking distance to multiple tube stations
- Available 9th of June
- Patio garden
- Sought after *Groves* Location
- Close to local amenities

For further information contact:

Lettings SB, 234 Uxbridge Road, Shepherds Bush, London, W12 7JD

Tel: 0208 740 8740 Email: enquiries@jorgensenturner.com

<https://www.jorgensenturner.com/>

Disclaimer

These particulars, whilst believed to be accurate are set out as a general outline only for guidance and do not constitute any part of an offer or contract. Intending purchasers should not rely on them as statements of representation of fact, but must satisfy themselves by inspection or otherwise as to their accuracy. No person in this firms employment has the authority to make or give any representation or warranty in respect of the property.