



## Hampden Road, KT1

£2,300 Per calendar month

An exceptional two double bedroom, two bathroom new build apartment with a private patio area. The property has a spacious, open plan kitchen reception room and private parking.

Hampden Road is a popular residential street close to Kingston town centre. Moments from an abundance of leisure facilities, shopping centre, excellent schools, restaurants and bars. Kingston and Norbiton train stations are also nearby along with a leisure centre and the River Thames.

### Features

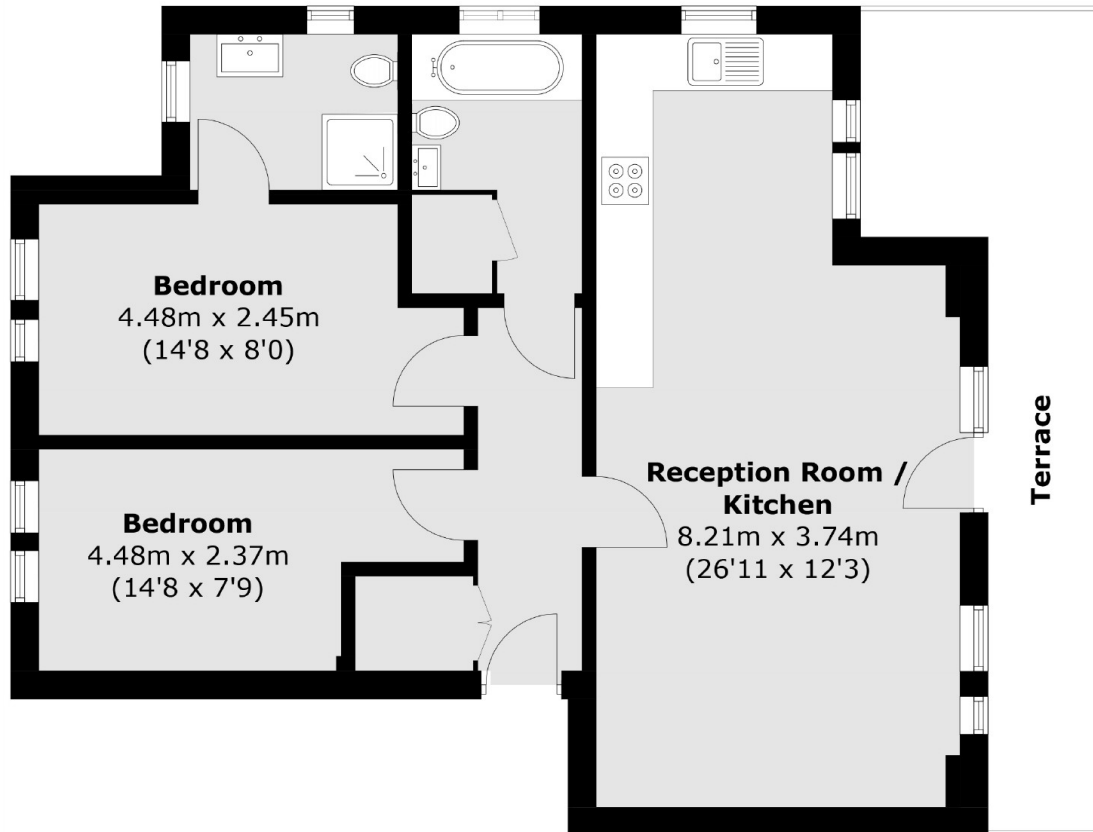
- Two Double Bedrooms
- Two Bathrooms
- New Build
- Private Allocated Parking
- High End Finish
- Private Patio



Hampden Road, KT1



Hampden Road,  
Kingston Upon Thames, KT1



Total area (approx.): 65.5 sq. m (705.0 sq. ft)  
Terrace area (approx.): 13.2 sq. m (142.0 sq. ft)