



Apartment (EPC Rating: B)

# STONEHOUSE

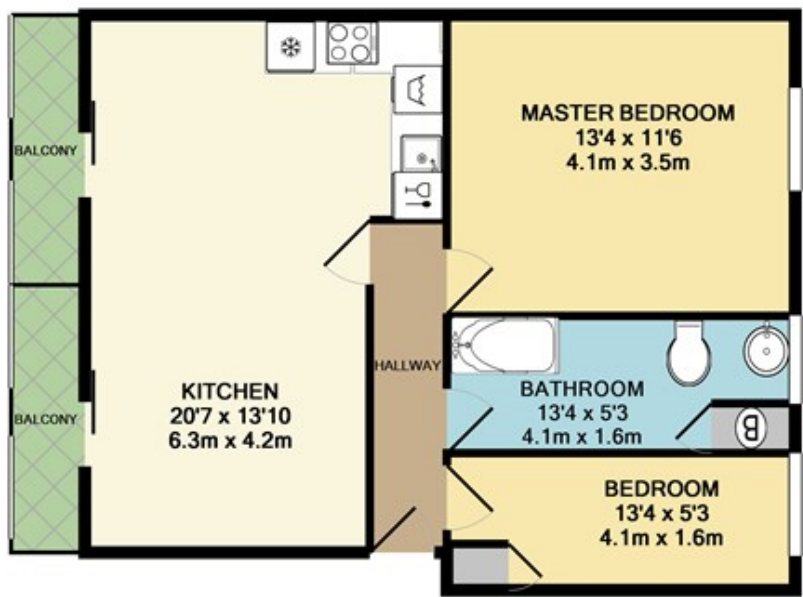
Per Calendar Month

# £995 Per



# 2 Bedroom Apartment located in Stonehouse

**\*\*DESIRABLE LOCATION\*\*** | Second Floor Apartment | Modern Fitted Kitchen | LARGE Open Plan Living/Kitchen/Dining Area | Two Bedrooms | Decked Balconies | Jacuzzi Bath | UNDERFLOOR HEATING | Deposit - £1148.07 | Council Tax Band C

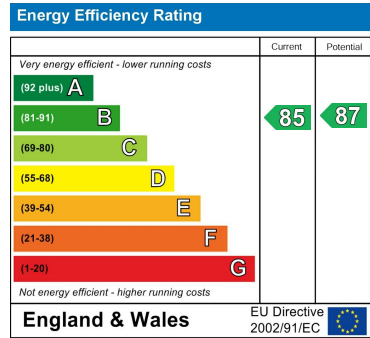


TOTAL APPROX. FLOOR AREA 578 SQ.FT. (53.7 SQ.M.)

Whilst every attempt has been made to ensure the accuracy of the floor plan contained here, measurements of doors, windows, rooms and any other items are approximate and no responsibility is taken for any error, omission, or mis-statement. This plan is for illustrative purposes only and should be used as such by any prospective purchaser. The services, systems and appliances shown have not been tested and no guarantee as to their operability or efficiency can be given  
Made with Metropix ©2016

Council Tax Band  
**B**  
Energy Performance Graph

Call us on  
**01752 201010**  
[enquiries@langtownandcountry.com](mailto:enquiries@langtownandcountry.com)  
[www.langtownandcountry.com](http://www.langtownandcountry.com)



Agents Note: Whilst every care has been taken to prepare these particulars, they are for guidance purposes only. All measurements are approximate and are for general guidance purposes only and whilst every care has been taken to ensure their accuracy, they should not be relied upon and potential buyers are advised to recheck the measurements.