



LANG TOWN
& COUNTRY

2 Elmwood Close, Glenholt, Plymouth, PL6 7JY


LANG TOWN
& COUNTRY
SALES

Price £439,995



Situated in the highly sought-after residential area of Glenholt, this well-presented three-bedroom detached bungalow enjoys a peaceful setting while remaining conveniently close to local amenities, transport links and the vibrant city of Plymouth. Known for its quiet surroundings and community feel, Glenholt remains a firm favourite with families, downsizers and those seeking comfortable single-level living.

Set back from the road, the property offers excellent kerb appeal with off-street parking and a double garage, providing ample space for vehicles and additional storage. Offered chain-free, this is an ideal opportunity for buyers looking for a smooth and straightforward purchase.

Internally, the bungalow provides generous and well-balanced accommodation throughout. The spacious living room offers a welcoming environment for relaxing and entertaining, while the well-equipped kitchen is thoughtfully arranged for everyday convenience. A recently installed boiler adds further peace of mind.

To the rear, a substantial sunroom creates an additional reception space, perfect for enjoying views over the garden all year round. Whether used as a dining area, reading room or entertaining space, it enhances the home's versatility and natural light.

The main bedroom benefits from the added luxury of a private ensuite shower room. Two further well-proportioned bedrooms are served by a family bathroom, offering flexibility for guests, family members or even a home office.

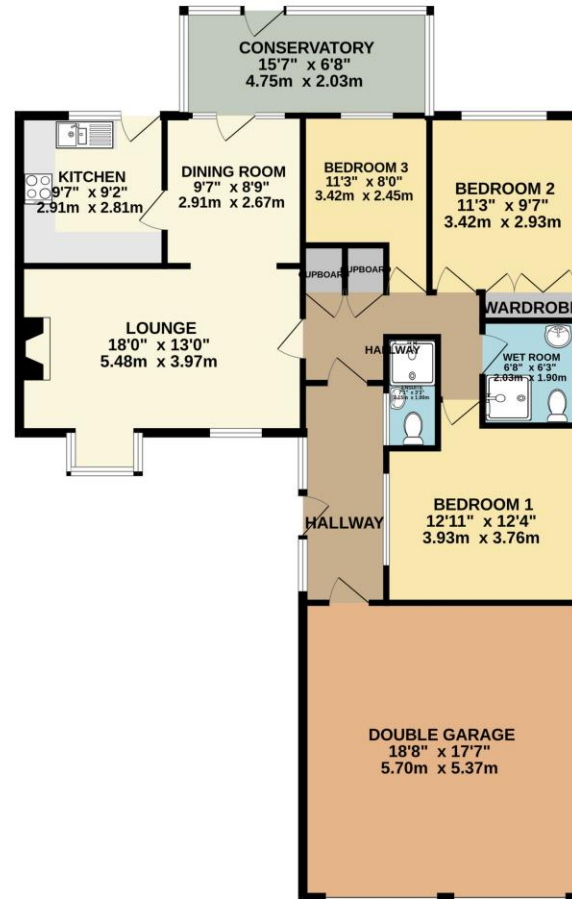
The property enjoys generous gardens to both the front and rear. The outdoor space provides excellent scope for gardening enthusiasts, family activities or simply relaxing in peaceful surroundings. The combination of space, privacy and potential makes this a rare opportunity to acquire a detached bungalow in a prime location, with the chance to personalise and create a truly special home.



To view this property call Lang Town & Country Estate Agents on **01752 256000**.

www.langtownandcountry.com





TOTAL FLOOR AREA : 1351 sq.ft. (125.5 sq.m.) approx.
 Whilst every attempt has been made to ensure the accuracy of the floorplan contained here, measurements of doors, windows, rooms and any other items are approximate and no responsibility is taken for any error, omission or mis-statement. This plan is for illustrative purposes only and should be used as such by any prospective purchaser. The services, systems and appliances shown have not been tested and no guarantee as to their operability or efficiency can be given.
 Made with Metropix ©2025



Lang Town & Country
 6 Mannamead Road
 Plymouth
 PL4 7AA
 Tel: 01752 256000
 Email: property@langtownandcountry.com
www.langtownandcountry.com

Lang Town & Country endeavour to ensure the accuracy of property details produced and displayed, we have not tested any apparatus, equipment, fixtures, fittings or services and so cannot verify that they are connected, in working order or fit for purpose. A buyer must check the availability of any property and make an appointment to view before embarking on any journey to see a property.

