



## Lamb's Conduit Street, WC1N

### £899,950

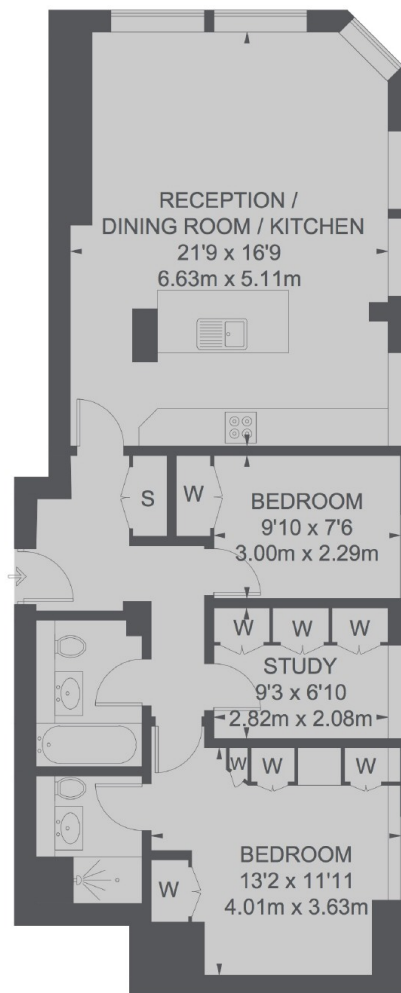
A well appointed two bed, two bathroom home located in a secure private block on Lamb's Conduit Street. There is an open-plan living room/kitchen bathed in natural light, an additional study as well as lift access and secure parking. The property is offered with no onward chain.

Lamb's Conduit Street is a partly-pedestrianised stretch of Bloomsbury with a village feel. The street, which enjoys good transport links, has many amenities and boutique shops, including places to eat and drink, a deli, a grocers, a chemist, a florist, a doctor's surgery, a bookshop, and more.

### Features

- Two Double Bedrooms
- Lift Access
- Share Of Freehold
- Secure Parking
- Separate Study
- No Onward Chain

# Lambs Conduit Street, London, WC1N



## FIRST FLOOR

TOTAL APPROX. FLOOR AREA 863 SQ. FT. (80.14 SQ. M.)