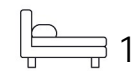


Living
made
better

Highfield Road
Dartford, DA1 2JJ



Asking Price £190,000

Highfield Road, Dartford, DA1 2JJ

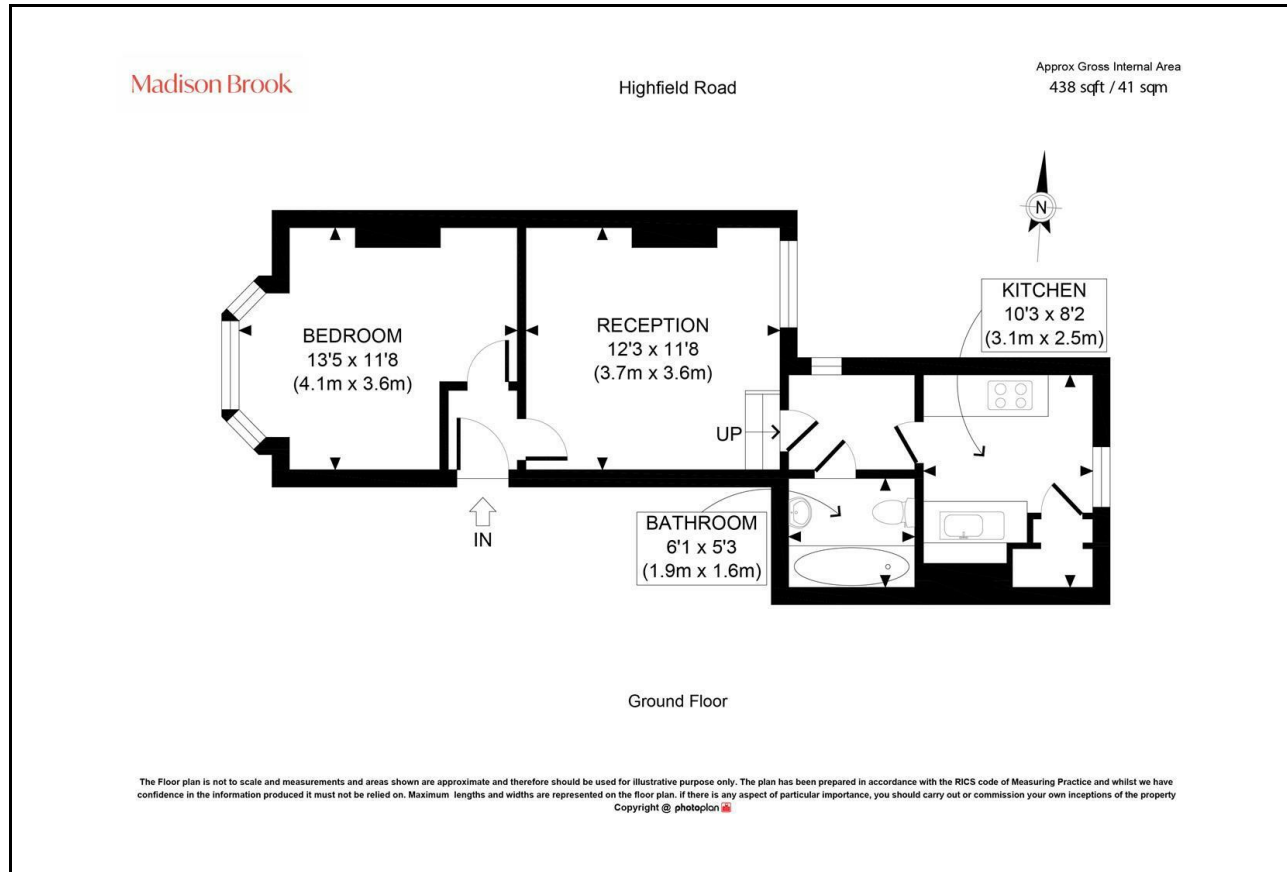
Madison Brook

Property Summary

A recently refurbished one-bedroom ground floor apartment offered chain free, featuring a separate modern kitchen, bright reception room and bay-fronted double bedroom, ideally located close to amenities, Central Park, and Dartford Station.

Remaining Lease: 150 years | Ground Rent: £0 pa | Service Charge: £2,320 pa

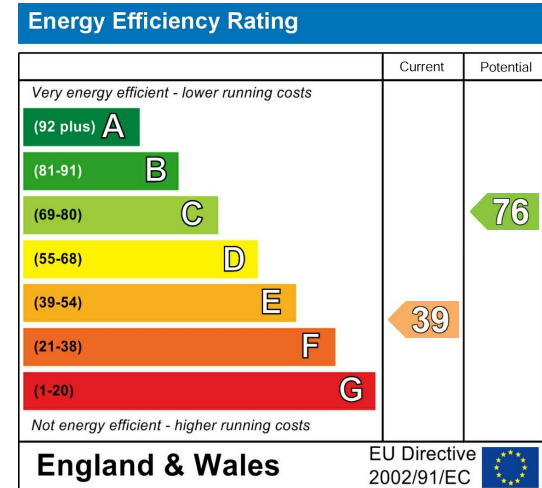
Floorplan



Area Map



Energy Efficiency Graph



These particulars, whilst believed to be accurate are set out as a general outline only for guidance and do not constitute any part of an offer or contract. Intending purchasers should not rely on them as statements of representation of fact, but must satisfy themselves by inspection or otherwise as to their accuracy. No person in this firm's employment has the authority to make or give any representation or warranty in respect of the property.

43 Loampit Vale, Lewisham, London, SE13 7FT

Tel: 020 3946 6200 Email:

lewisham@madisonbrook.com

<https://madisonbrook.com/>