

Symonds
& Sampson

ESTABLISHED 1858

St. James Close

Pool Quay, Dorset.



24

St. James Close
Poole
Dorset BH15 1JL



- A stunning Grade II Listed period home
- Beautifully well kept with refurbished windows and new pointing
 - Grand flexibility and versatile living
 - Situated in the heart of Old Town Poole
- A short stroll from the Quay, Marina and Harbour
 - Five bedroom suites, set over five floors
 - Off road parking and a garage
 - Internal inspection is a must
 - Offered with no forward chain
 - A wealth of charm and character features

Guide Price **£870,000**

Freehold

Wimborne Sales
01202 843190

wimborne@symondsandsampson.co.uk



HISTORY OF THE HOME

As seems common with houses from this period the exact date of construction for the house is open to debate. The terrace of which number 24 forms a part was probably constructed in its current form in the 1770s. It might have been built on the remains of an earlier property possibly from the Tudor period.

In 1788 an advert appeared in the Salisbury Times and Journal advertising that the property would be offered for sale at the Antelope Inn. One resident from this period was Captain Fussell and the house could have been used as a home for seamen given its proximity to the port. The advent of the census in 1841 starts to give a clearer idea as to the residents of the house.

In 1841 a widow called Ann King was living in the house with her two children. By the 1870s James Sturmeay was advertising his services as a music teacher and a seller of musical instruments and it is probable that around about this time a shop front was added to the building. By 1881 the house was inhabited by John Kendall his wife and five children. The Kendall family lived in the house until the 1930s and for some of this time the shop element of the house could have been used as a book binders and printers with the printing press probably located in the cellar.

During the Second World war Church Street was damaged by bombs and nearly all houses played host to billeted soldiers and sailors. By the 1950s the house was being used as a lodging house. The late 1960s and 1970s saw a revival of interest in the old town and the Old Town Conservation Area was created in 1974 and was one of the first such areas in the country. One of the leading lights in this revival was a builder called Chick Fowler who lived in the house and undertook a complete restoration of the house and was also responsible for the restoration of many similar properties in the area. He also had close links with the Lighthouse arts centre and many famous names from the era came and lodged at the house whilst performing locally.

The house was subsequently run as a bed and breakfast for about a decade from the late 1990s onwards. The current owners took over the house in 2017 and since then they have used it as their family home. A restoration project has been undertaken to remove several unsympathetic modern alterations to the building with an emphasis on the use of local craftsmen wherever possible.

OUTSIDE

The property enjoys a beautifully well kept courtyard style garden which is bound by high level walls and leads directly from the kitchen. The kitchen itself has double opening French style patio doors making the ideal kitchen garden for herbs and spices for the avid cook. The walled garden is pretty due to the numerous potted plants and stone walls whilst the garden is quaint it still has a good level of privacy and a great deal of calm. There is off road parking as well as a garage in a block a few hundred yards from the property.





LOCATION

This beautiful period home has superb flexibility and versatility and must be inspected internally to understand the space on offer. The outlook from most windows enjoys interesting and lovely views of equally beautiful homes and an array of old rooftops, as well as St James Church itself.

Set in the heart of Old Town Poole, with an array of stunning period homes which all offer tremendous history with pretty exteriors. St James Close is a few hundred feet from the Poole quay, harbour, and Poole Marina, ideal for wildlife, fishing or for a boat enthusiast. The area has an illustrious choice of shops, eateries, and stunning walks with the most beautiful backdrop. The quay is still bustling with life

and every day offers something new.

Poole has a mainline rail service to London Waterloo. Bournemouth International Airport is only a short distance away. The area boasts Comprehensive Shopping, Poole, Bournemouth, Southampton and Salisbury and all local and a short drive away. Good local schools are numerous and include Lilliput First School, Baden Powel Middle School, Canford School, Bournemouth and Poole Grammar schools, Bournemouth College, Talbot Heath, and Park School. Championship golf is available at Parkstone Golf Course, at Ferndown, Remedy Oak or Broadstone Golf Clubs. Theatres are available at the Poole Lighthouse, The Pavilion and the BIC (Bournemouth International Centre)

DIRECTIONS

The home is situated directly next door to St James Church. The church itself is active and extremely pretty. If you were walking from the Quay, turn directly into Thames Street, continue by foot a few hundred yards where Church Street will be found on the right hand side. The church will appear obvious and the home is next door. From Levet's lane proceed by foot onto Church Street and the home is on the right hand side before the church.

SERVICES

All mains services
Council Tax Band - F
EPC Rating - Exempt

St. James Close, Poole, BH15

Approximate Area = 2415 sq ft / 224.3 sq m

Limited Use Area(s) = 49 sq ft / 4.5 sq m

Total = 2464 sq ft / 228.8 sq m

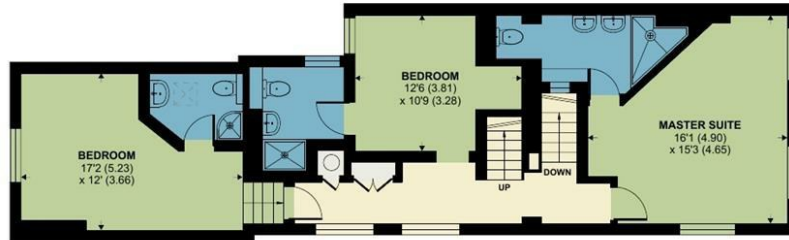
For identification only - Not to scale



Denotes restricted head height



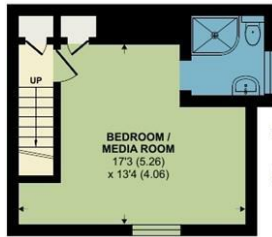
THIRD FLOOR



FIRST FLOOR



SECOND FLOOR



LOWER GROUND FLOOR



GROUND FLOOR



Floor plan produced in accordance with RICS Property Measurement Standards incorporating International Property Measurement Standards (IPMS2 Residential). © nrichcom 2023. Produced for Symonds & Sampson. REF: 1017718



WIM/NW/MAY26



naei | propertymark
PROTECTED

WWW.
the
londonoffice.co.uk
40 ST JAMES'S PLACE SW1

01202 843190

wimborne@symondsandsampson.co.uk
Symonds & Sampson LLP
5, West Street,
Wimborne, Dorset BH21 1JN



Important Notice: Symonds & Sampson LLP and their clients give notice that they have no authority to make or give any representations or warranties regarding the property. These particulars do not form part of any offer or contract and must not be relied upon as statements of fact. Some descriptions and images may have been AI-assisted; while reviewed for accuracy, interested parties should verify key details through inspection or by contacting our agents. All measurements and distances are approximate. Text, photographs, and plans are for guidance only and may not be comprehensive. It should not be assumed that the property has all necessary planning or regulatory consents, and no services, equipment, or facilities have been tested. No investigations have been made into pollution or contamination; purchasers must make their own enquiries. The property is sold subject to all existing wayleaves, easements, and rights of way (public or private), whether mentioned or not. Vendors are not required to define such rights.

SALES | LETTINGS | AUCTIONS | FARMS & LAND | COMMERCIAL | NEW HOMES | PLANNING & DEVELOPMENT