



GROSVENOR HILL MAYFAIR W1K  
£4,200 PER WEEK AVAILABLE 17/12/2025




Hamptons

THE HOME EXPERTS

# { THE PARTICULARS

Grosvenor Hill Mayfair W1K

£4,200 Per Week  
Furnished

-  2 Bedrooms
-  2 Bathrooms
-  1 Reception

## Features

DUPLEX APARTMENT, TWO INTERCONNECTING RECEPTION ROOMS, STUNNING EAT-IN KITCHEN, TWO DOUBLE BEDROOMS, LARGE PRIVATE ROOF TERRACE, CRESTRON HOME SYSTEM

Council Tax

Council tax band not specified

Hamptons  
168 Brompton Road  
Knightsbridge, London, SW3 1HW  
020 7584 2014  
KnightsbridgeLettings@hamptons.co.uk  
www.hamptons.co.uk

## The Property

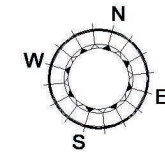
A magnificent split level duplex apartment which has been individually designed with the highest specification allowing for space and style. Located in this small private block set within the heart of exclusive Mayfair neighbouring the famous Berkeley Square. The apartment comprises two interconnecting reception rooms with ample dining space, a stunning eat in kitchen, guest cloakroom, two double bedrooms with en-suite bathrooms. Alongside the bespoke fixtures and fittings is a state of the art Crestron home control system offering access to lighting, security, underfloor heating, comfort cooling and media / audio visual systems controlled via an I-Pad. The apartment has been fitted with LED televisions and an Aqua Television in the master en-suite; there are also ceiling speakers in all primary rooms allowing for music to be played from the Crestron 'home' i-Pod dock, tailored to suit your requirements and mood. The apartment benefits from a spectacular private decked roof terrace to the rear of the property allowing for a perfect space for private entertaining.

## Location

Close by to all the exclusive amenities, including world-class shops, bars and restaurants. Hyde Park is within a short stroll. Nearby Underground stations include Bond.



# GROSVENOR HILL

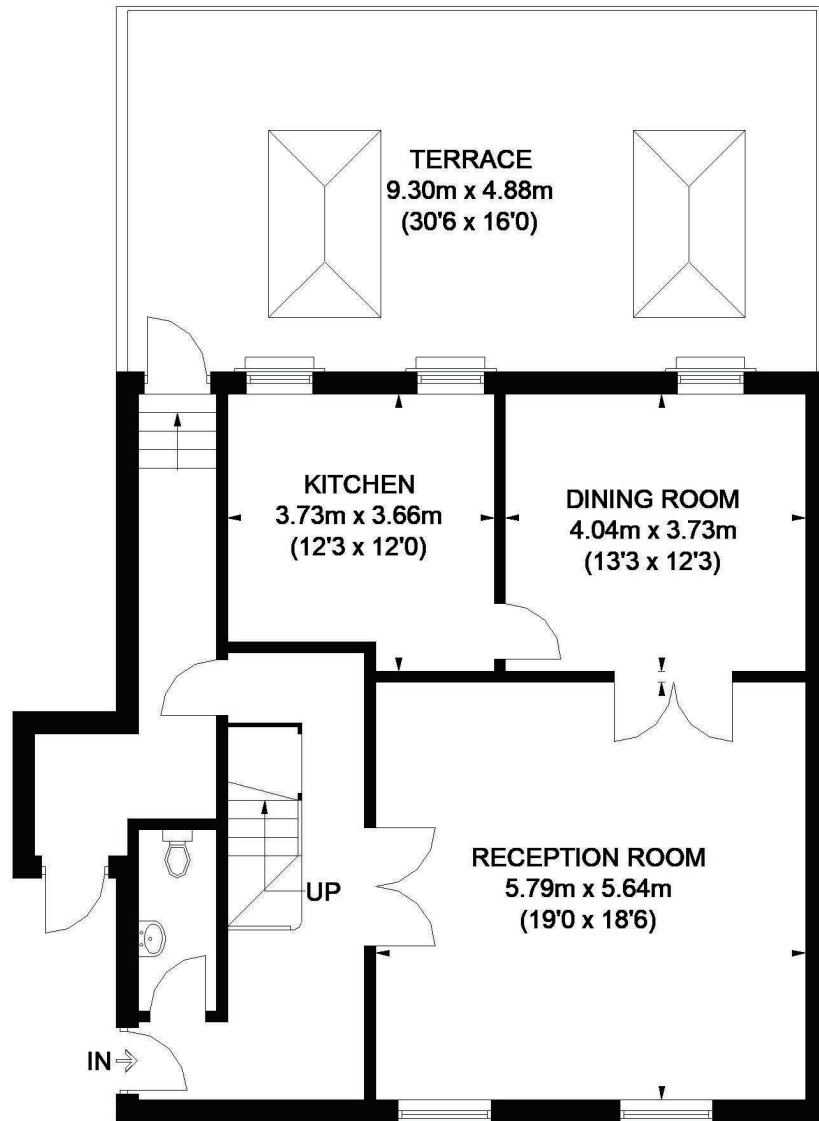


APPROXIMATE GROSS INTERNAL AREA  
1760 SQ. FT. (163.5 SQ. M.)

This plan has been drawn from supplied plans,  
strictly for use as a guide only.

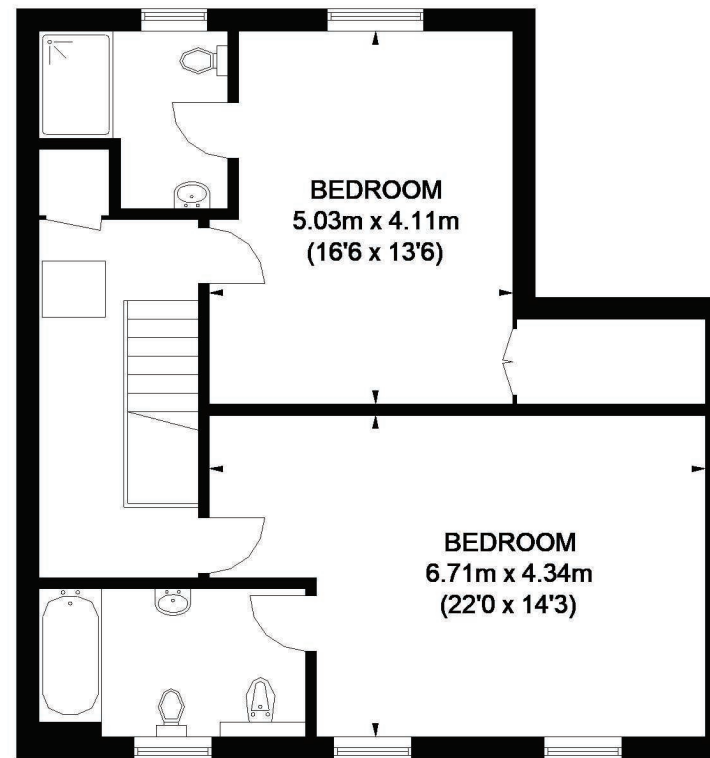


This plan is for layout guidance only. Not drawn to scale unless stated. Windows and door openings are approximate. Whilst every care is taken in the preparation of this plan, please check all dimensions, shapes and compass bearings before making any decisions reliant upon them. Please be advised that Countrywide / our agents have not seen or reviewed any building regulations or planning permission in relation to works carried out to the property (ID613531)



**SECOND FLOOR**

For Clarification  
We wish to inform prospective tenants that we have prepared these particulars as a general guide and they have been confirmed as accurate by the landlord. We have not verified permissions, nor carried out a survey, tested the services, appliances and specific fittings. Room sizes are approximate and measurement figures rounded: they are taken between internal wall surfaces and therefore include cupboards/shelves, etc. Accordingly, they should not be relied upon for



**THIRD FLOOR**

carpets and furnishings. It should also be noted that all fixtures and fittings, carpeted, curtains/blinds, kitchen equipment and garden statuary, whether fitted or not, are deemed removable by the landlord unless specifically itemised with these particulars. Please enquire in office or on our website for details on holding deposit and tenancy deposit figures.

Energy Efficiency Rating		Current	Potential
Very energy efficient - lower running costs			
100-100	A		
81-100	B		
62-81	C		
43-62	D		70
23-43	E	46	
7-23	F		
1-7	G		
Not energy efficient - higher running costs			
England & Wales		EU Directive 2002/91/EC	

