



Ground Floor Front, 71 Parliament Hill, London, NW3 2TH

£465,000

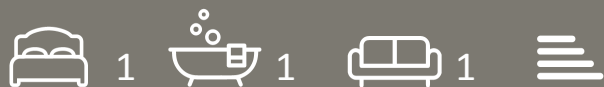
# 71 Parliament Hill, London NW3 2TH

A beautifully refurbished one-bedroom apartment extending to approximately 387 sq ft, enviably positioned on Parliament Hill, NW3, moments from the open green spaces of Hampstead Heath.

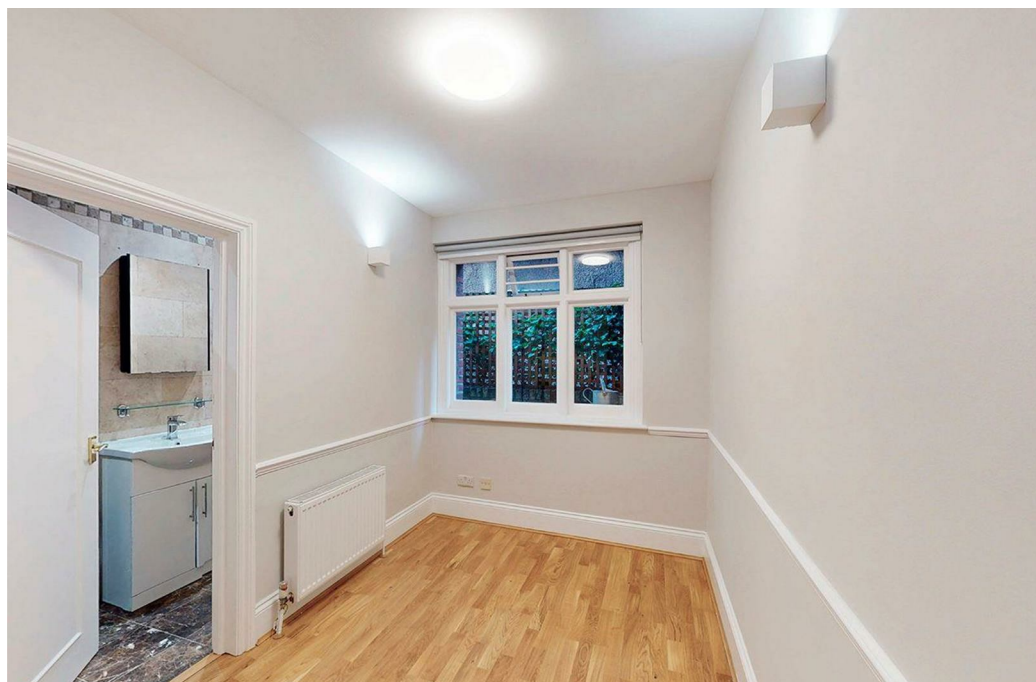
Finished to a high standard throughout, the property offers a well-considered layout with a bright and inviting reception room extending into a bright bay window, complemented by a sleek, fully fitted open plan kitchen with integrated appliances. The bedroom is well-proportioned fitted wardrobes in a peaceful setting, while the contemporary bathroom is finished with stylish, modern fittings. Entrance hallway with fitted wardrobes. Entry phone system.

The apartment has been thoughtfully redesigned to maximise both space and natural light, creating a comfortable and highly functional home.

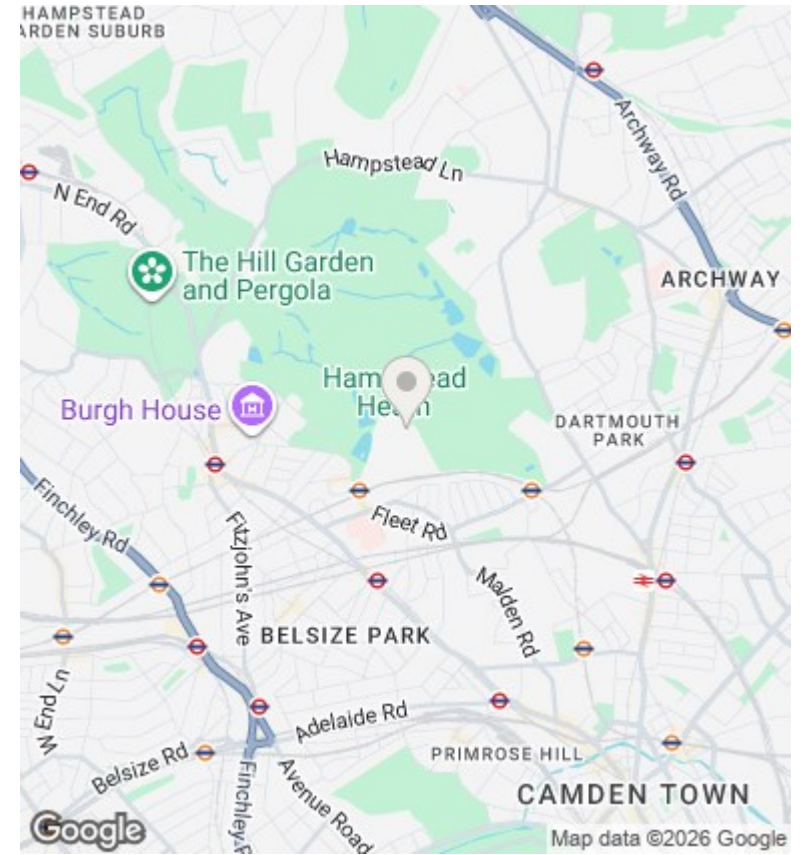
Parliament Hill is superbly located for the amenities of the surrounding area, with a variety of independent cafés, shops and transport links all within easy reach, offering excellent connectivity to central London.



Council Tax Band: D



## Directions



## Viewings

Viewings by arrangement only. Call 02073593191 to make an appointment.

## Council Tax Band

D

Energy Efficiency Rating		
	Current	Potential
Very energy efficient - lower running costs		
(92 plus) <b>A</b>		
(81-91) <b>B</b>		
(69-80) <b>C</b>		
(55-68) <b>D</b>		
(39-54) <b>E</b>		
(21-38) <b>F</b>		
(1-20) <b>G</b>		
Not energy efficient - higher running costs		
<b>England &amp; Wales</b>	EU Directive 2002/91/EC	



