



## Flat 9 Chapel Court

Sun Street, Sandy, SG19 2BX

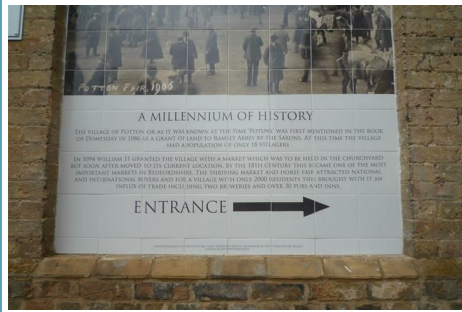
£925 Per annum

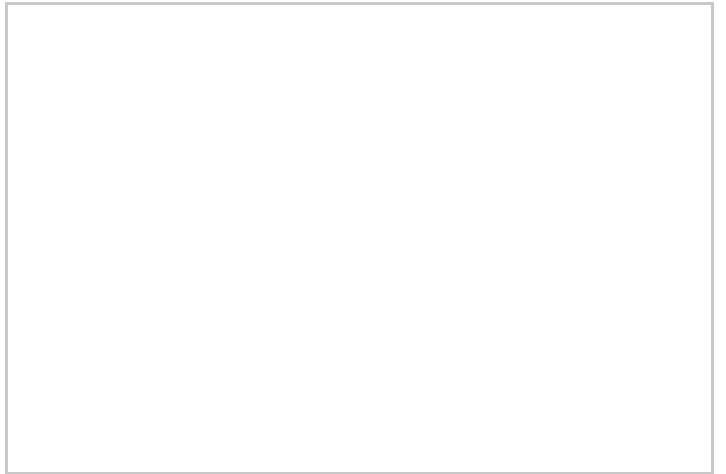
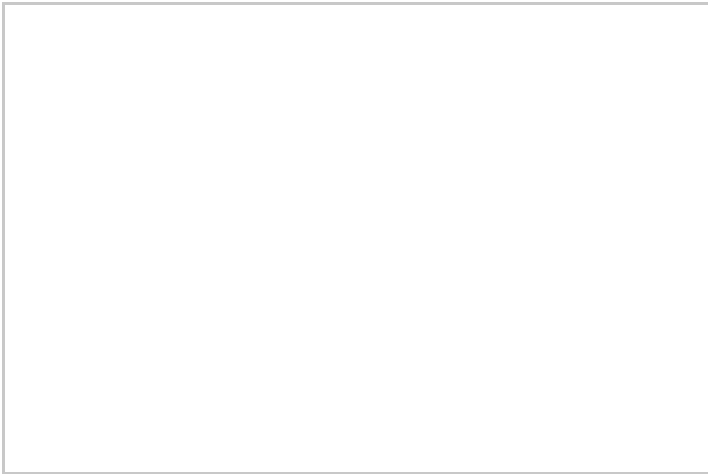
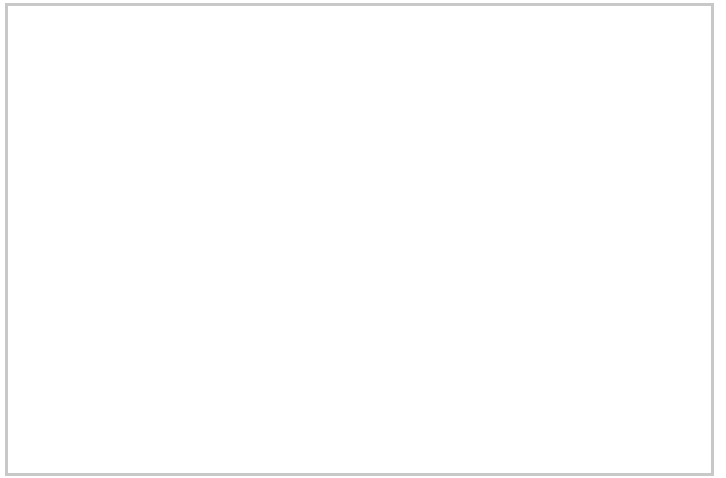
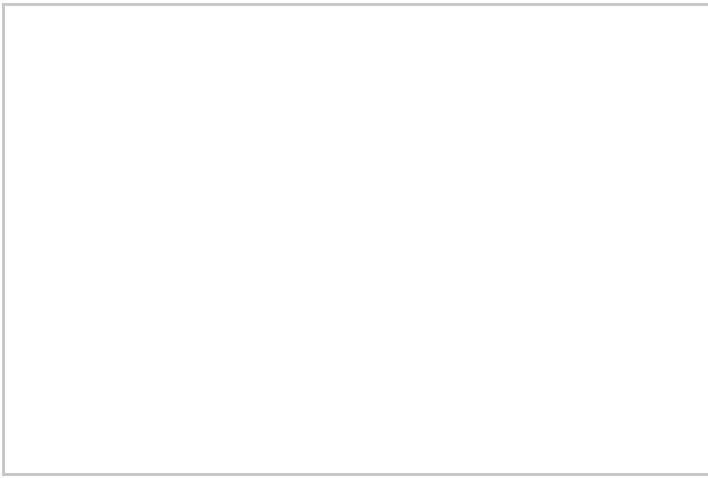


# Flat 9 Chapel Court

Sun Street, Sandy, SG19 2BX

£925 Per annum





## Road Map



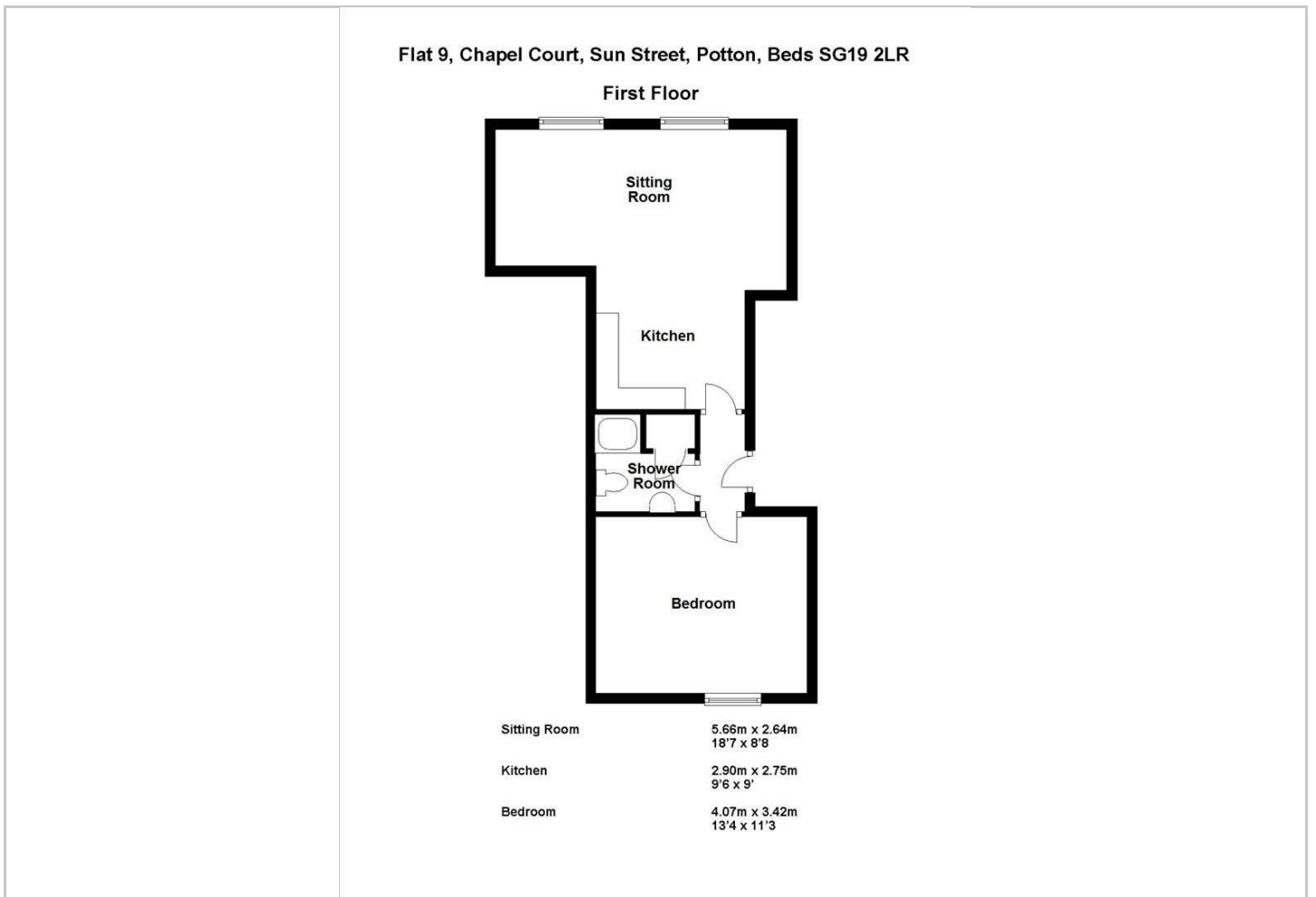
## Hybrid Map



## Terrain Map



## Floor Plan



## Viewing

Please contact our OpenArch Properties Limited Office on 01223 664200 if you wish to arrange a viewing appointment for this property or require further information.

## Energy Efficiency Graph



## Credit References and Deposit

Prospective tenants will be required to complete a credit referencing application payable whether successful or not. Prior to taking occupation of the property you will be required to pay a deposit of 1½ times the monthly rent, the first months rent in advance and an administration fee.

The Grange Market Street, Swavesey, Cambridgeshire, CB24 4QG  
Tel: 01223 664200 Email: [enquiries@openarch.co.uk](mailto:enquiries@openarch.co.uk) [www.openarch.co.uk](http://www.openarch.co.uk)