



## Queens Crescent, NW5

£1,998 Per calendar month

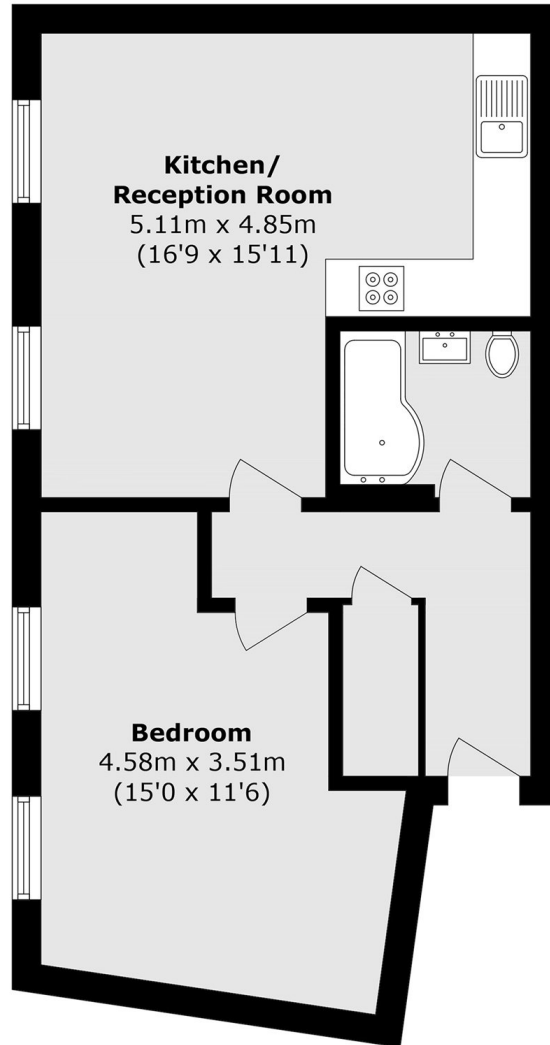
A newly renovated one double bedroom apartment close to the Northern Line. The property boasts a modern kitchen with brand new appliances, large living area, contemporary bathroom and wooden herringbone floors throughout.

Queens Crescent is ideally situated close to all the amenities of Belsize Park and Kentish Town and located within easy access to local transport links including Chalk Farm Underground Station (Northern Line). The popular open spaces of Hampstead Heath and Primrose Hill are also within easy reach.

### Features

- Newly Renovated
- New Appliances
- Modern Bathroom
- Wooden Flooring
- Local Amenities
- Great Transport Links

# Queens Crescent, London, NW5



Total area (approx.): 47.8 sq. m (514.5 sq. ft)