



Stapleton Hall Road, Stroud Green, London, United Kingdom, N4

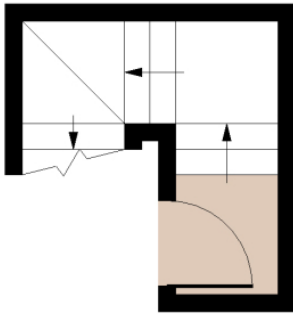
£2,150 pcm

A characterful two-bedroom top floor flat set within a charming period conversion, offering bright and practical living space in an excellent location. The property features two well-proportioned double bedrooms, a spacious reception room filled with natural light, a separate kitchen, and a sleek modern shower room. Ideally positioned opposite the highly regarded St. Aidan's School and within easy reach of Harringay Mainline Station and Finsbury Park, the property is also moments from an array of independent cafés, bars, restaurants, and the open green spaces of Finsbury Park and the Parkland Walk.

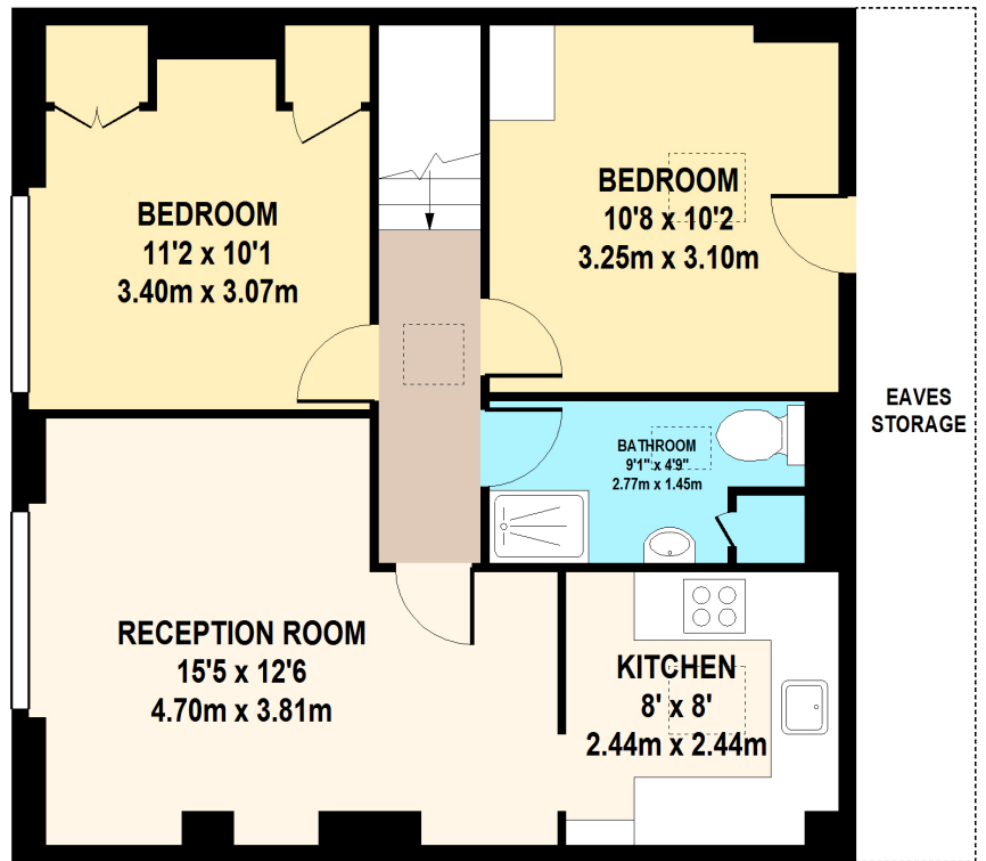
Hobarts Estate Agents
23 Ferme Park Road, Stroud Green, London, N4 4DS
stroudgreen@hobarts.co.uk
www.hobarts.co.uk
442083429000



- Two-bedroom top floor flat
- Separate kitchen
- Moments from Parkland Walk and Finsbury Park
- Excellent transport links into Central London
- Bright and spacious reception room
- Close to Haringay Station and Finsbury Park
- Near cafés, bars, restaurants, and local amenities



1ST FLOOR



2ND FLOOR

STAPLETON HALL ROAD
 TOTAL APPROX. FLOOR AREA 605 SQ.FT. (56.2 SQ.M.)

Whilst every attempt has been made to ensure the accuracy of the floor plan contained here, measurements of doors, windows, rooms and any other items are approximate and no responsibility is taken for any error, omission, or mis-statement. This plan is for illustrative purposes only and should be used as such by any prospective purchaser. The services, systems and appliances shown have not been tested and no guarantee as to their operability or efficiency can be given



Score	Energy rating	Current	Potential
92+	A		
81-91	B		
69-80	C		76 C
55-68	D	65 D	
39-54	E		
21-38	F		
1-20	G		

Tenure:

Ground rent:

Service Charges:

Local Authority:

Viewings:

Strictly by appointment via
HOBARTS ESTATE AGENTS
442083429000

Contact:

23 Ferme Park Road, Stroud
Green, London, N4 4DS

stroudgreen@hobarts.co.uk
www.hobarts.co.uk



These property details, including measurements, floor plans and items depicted in photographs etc. are intended only as a brief guide to prospective purchasers and are not intended to be relied upon for any purpose whatsoever. Any interested party should satisfy themselves by inspection or otherwise as to the correctness of each statement contained in these details.