



Hurlingham Square, SW6

£2,000,000

This fully renovated, six bedroom, four bathroom family home in the coveted Hurlingham Square offers 2000 sq ft of luxury space. Located in a secure gated development just steps from South Park, it features high-end modern finishes, a private courtyard garden, and rare off-street parking for two cars.

Hurlingham Square is located off Peterborough Road just to the south of Parsons Green and thus offers easy access to the many local amenities of the area including the nearby Hurlingham Club, River Thames and numerous prestigious schools.

Features

- Six Bedrooms
- Design-Led Renovation
- Gated Development
- Private Parking Spaces
- Front and Rear Garden
- Parsons Green



Hurlingham Square, SW6

This property presents a rare opportunity, being one of only two large gate houses in the development. Arranged over four floors, every inch of the home has been meticulously designed and styled to an incredibly high standard, featuring bespoke fixtures and fittings throughout.

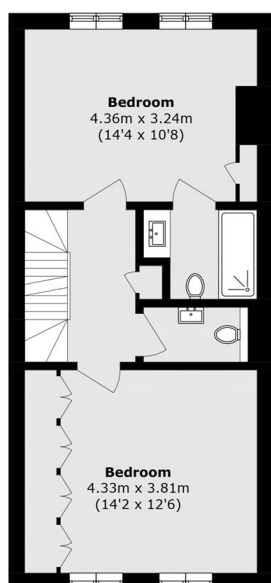
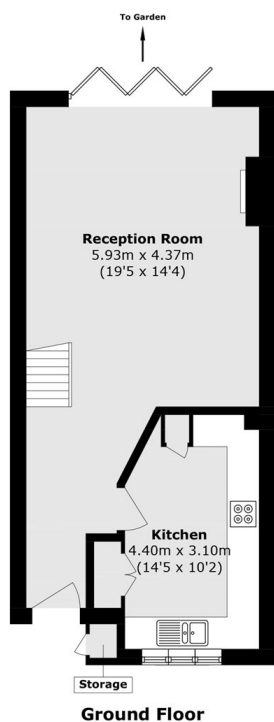
The first floor comprises a beautiful guest bedroom with park views and an en-suite bathroom. To the front, a second large bedroom is currently utilised as a children's playroom, showcasing the versatility of the living space. A guest WC is also located on this floor.

The second floor has two large double bedrooms that are idyllically styled as children's bedrooms, both with en suite bathrooms, the larger of two having a free standing bath.

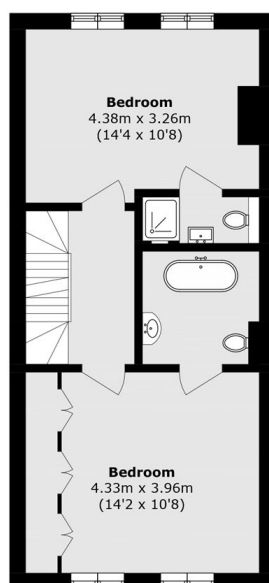
The top level is dedicated to a spectacular principal suite. The master bedroom flows into an impeccable, high-end dual bathroom, which leads into a generous dressing room complete with bespoke fitted wardrobes currently doubling as a stylish work from home office.



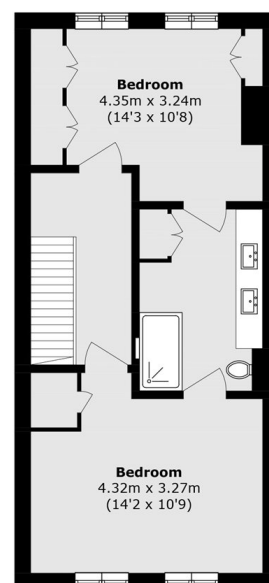
Hurlingham Square, London, SW6



First Floor



Second Floor



Third Floor

Total area (approx.): 176.8 sq. m (1903.1 sq. ft)
External Storage area (approx.): 0.4 sq. m (4.3 sq. ft)