

12 Allt-yr-yn Close

Newport, Newport NP20 5ED

Situated on sought-after Allt-Yr-Yn Close, this traditional three-bedroom semi-detached home is offered for sale with no onward chain. Boasting character features throughout, spacious living accommodation and excellent potential, this property is ideal for families or buyers seeking a charming home.

Features

- No onward chain
- Two generous reception rooms
- Traditional features
- Driveway & detached Garage
- Beautiful Kitchen & Bathroom
- Close proximity to the City Centre








Offers Over £375,000



Jack Thomas
Archer & Co Newport
01633 449884
newport@archerandco.com



12 Allt-yr-yn Close

-  3 Bedrooms
-  1 Bathroom
-  Tax band: E
-  EPC: D
-  Gas
-  Freehold
-  what3words\dating.prep.retain

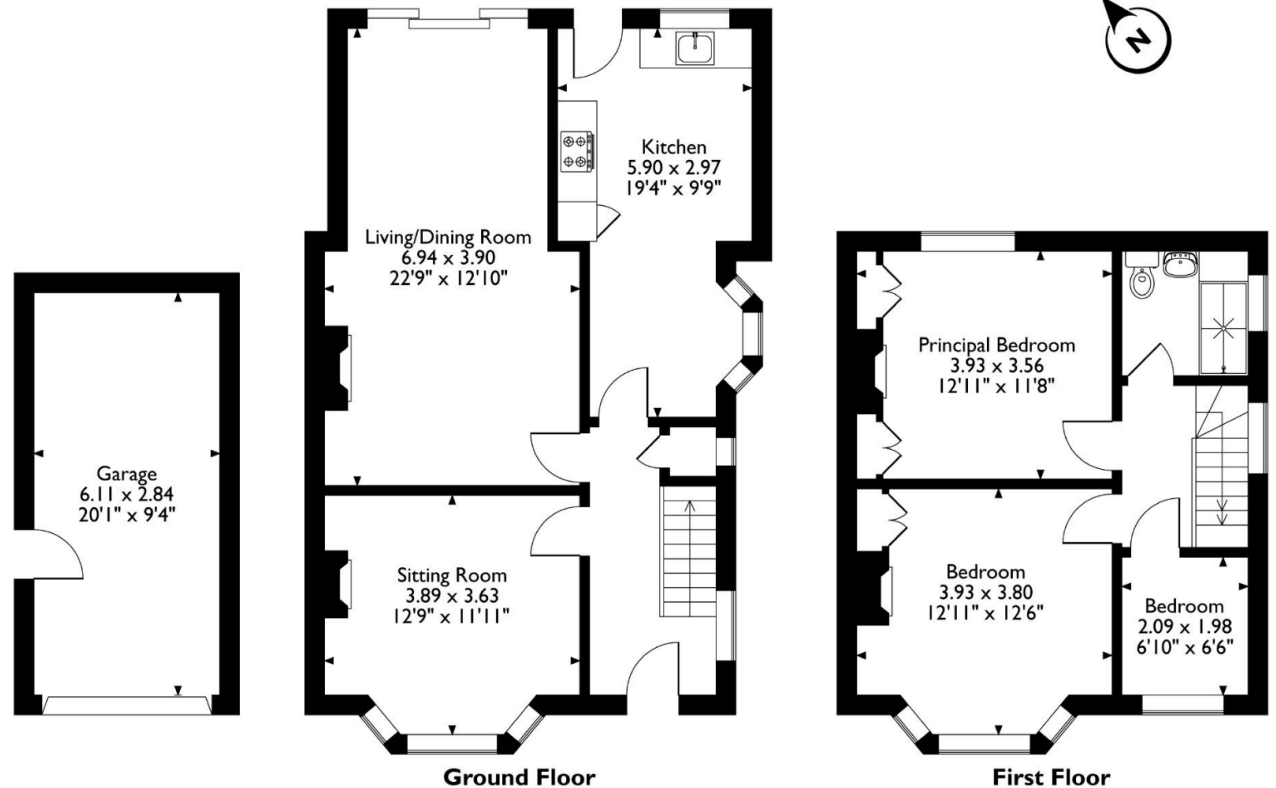


notes:

12, Allt-yr-yn Close, Newport, Newport
 Approximate Gross Internal Area
 Main House = 105 Sq M/1130 Sq Ft
 Garage = 17 Sq M/183 Sq Ft
 Total = 122 Sq M/1313 Sq Ft



Scan for full details



Please note that the location of doors, windows and other items are approximate and this floorplan is to be used for illustrative purposes only. Unauthorized reproduction is prohibited.