

Brompton Park Crescent, SW6

£399,950

BRIK





Brompton Park Crescent

£399,950 LEASEHOLD | Studio APARTMENT | 404 SQ FT | 38 SQ M | D COUNCIL TAX | £4,997 STAMP DUTY

A well-presented studio apartment in a very popular gated development benefiting from gym, swimming pool, sauna and steam room.

The apartment itself is on the second floor and comprises a generous L-shaped studio room with a sleeping area, space for dining and reception area. There is a separate kitchen fitted with wall and base units and a full size bathroom. A private balcony offers views over Brompton Park Crescent and the communal gardens.

- ✓ Studio apartment
- ✓ Second floor
- ✓ Secure gated development
- ✓ Off street parking space
- ✓ Access to on-site gym, swimming pool, sauna and steam room
- ✓ Large balcony
- ✓ Porter
- ✓ Council Tax band: D
- ✓ EPC rating: D



Brompton Park Crescent is a private gated development by Brompton Cemetery and is in a highly convenient location being only a short walk to the plethora of shops, cafes and restaurants of Fulham Broadway (Underground, District line Zone 2) and the overground (and additional underground station) of West Brompton (London Overground & National Rail, District Line, Zone 2).



Mathew Goss

ASSISTANT SALES MANAGER
30 YEARS EXPERIENCE

020 7384 6790

mathew@brik.co.uk





FULHAM AREA GUIDE

West Brompton

West Brompton lies between North End Road synonymous with its vibrant street market and the historic and beautifully landscaped Brompton Cemetery to the East, owned by the Crown and managed by The Royal Parks.

Transport in this area is great. West Brompton tube (District Line, Zone 2) provides a handy Overground rail link to Clapham Junction (two stops South) and Westfield shopping centre (two stops North), as well as services in to central London. Earls Court underground (District Line & Piccadilly Lines, Zone 1) is walk-able too. Fulham Broadway, with its shops, cinema, restaurants, David Lloyd gym and tube is also only a short walk away. Fulham Broadway (District Line, Zone 2) tube is the closest transport link.

Property prices in this area will benefit from the ongoing Earls Court regeneration programme, involving the demolition of the Earls Court exhibition centre to make way for 800 new homes, as well as a new High Street, with independent shops, cultural and community facilities.

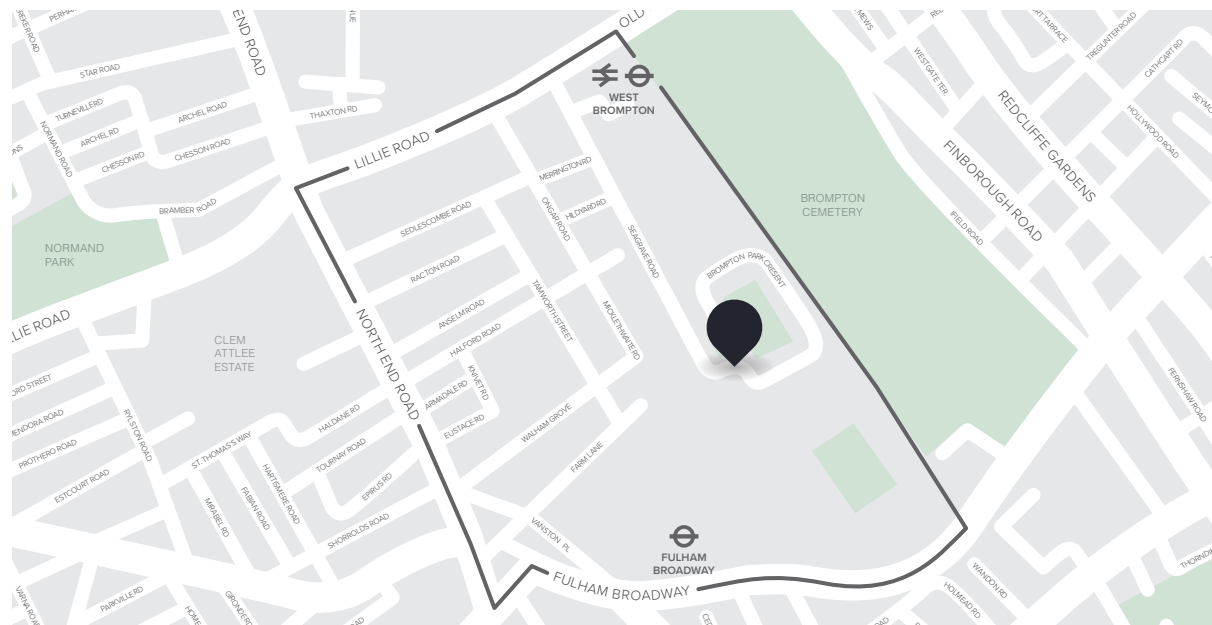
CLOSEST:

- 🚶 Fulham Broadway (🚶 11 mins)
- 🚶 West Brompton (🚶 8 mins)
- 🚶 Eel Brook Common (🚶 10 mins)

KEY:

- 📍 Property location
- 'West Brompton' area of Fulham

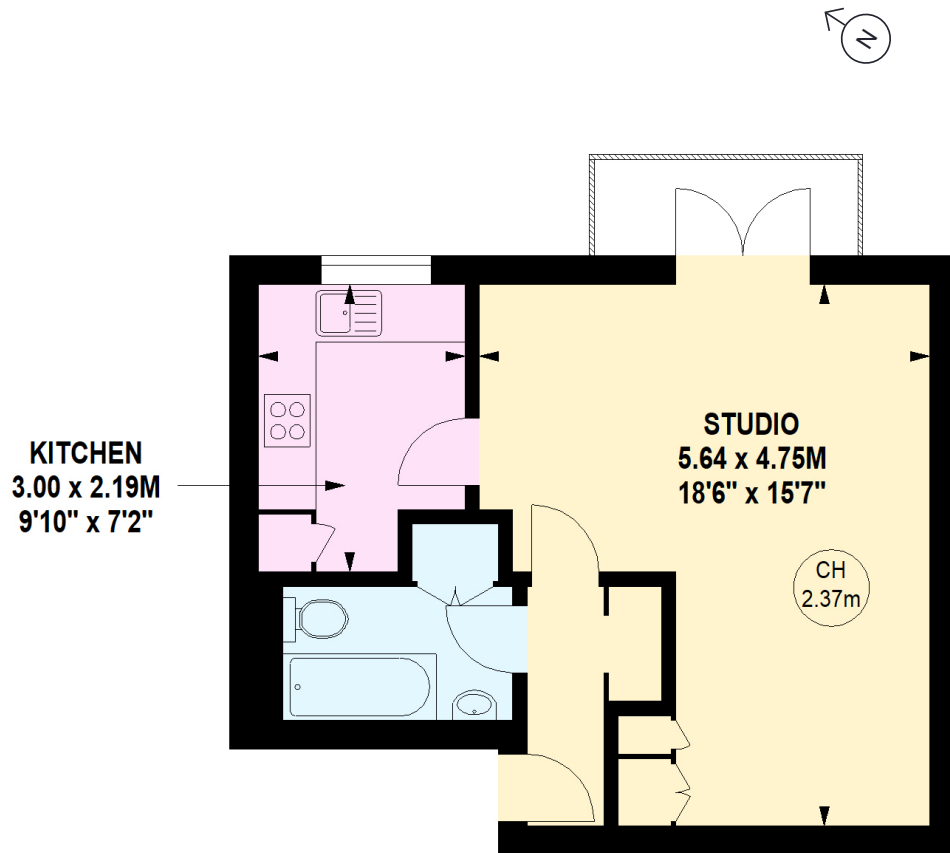
[Read all our Fulham area guides here](#)



BRIK

404
SQ FT

38
SQ M



Second Floor

Important notice Brik give notice that: all text, photographs and plans on these brochure are for guidance only and are not necessarily comprehensive; any areas, measurements or distances given are approximate; these details do not constitute part of an offer or contract and must not be relied upon as statements or representations of fact; it should not be assumed that the property has all the necessary planning permissions and building regulations approvals; we are not authorised to give any representations or warranties in relation to this property whatsoever; potential purchasers must satisfy themselves as to the correctness of all details by inspection or otherwise. Brik, 77 Parsons Green Lane, Fulham, London SW6 4JA Tel: 020 7384 6790 Email: hello@brik.co.uk