



## Eastbury Grove, W4

### £565,000

Offered to the market with no onward chain and a share of the freehold, this charming period ground floor apartment has been fully refurbished to a fabulous standard.

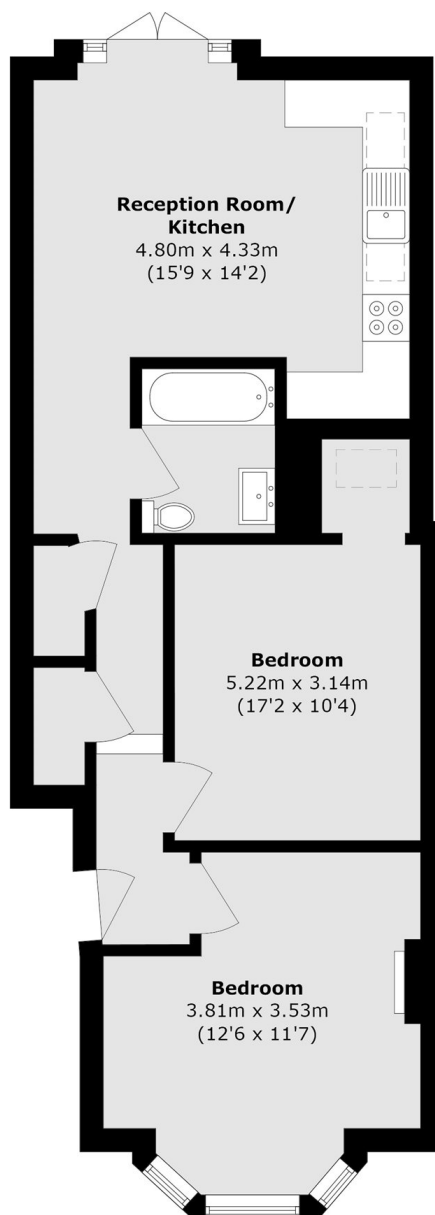
Boasting two well proportioned bedrooms, stunning open plan kitchen/reception room and a beautifully landscaped private garden perfect for enjoying an evening tipple, this home effortlessly blends character with contemporary living.

Eastbury Grove is situated in a popular central location providing easy access to Chiswick High Road, the River Thames, the A4, and the M4 to Heathrow. Local underground stations include Turnham Green and Stamford Brook.

### Features

- No Onward Chain
- Share of Freehold
- Fully Refurbished
- Ground Floor
- Two Bedroom
- Private Garden

# Eastbury Grove, London, W4



Total area (approx.): 63.8 sq. m (686.7 sq. ft)