

NEVIN & WELLS

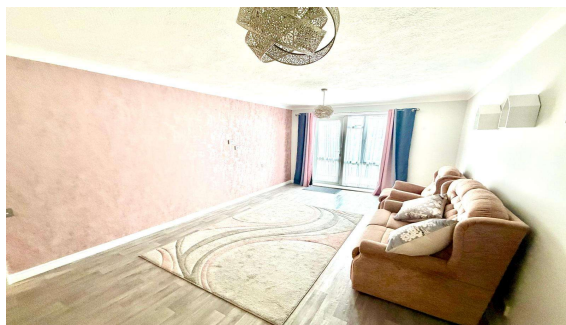
Residential

Established 2002



Manor Farm Court, Egham, TW20 9JR

£155,000 L/H



A rare opportunity to buy a ground floor one bedroom retirement apartment for the over 55's. There is a newly installed kitchen and shower room, and the unique benefit of a patio area outside the lounge. Situated in the heart of historic Egham, close to the High Street and station. Being sold with No onward chain.

Manor Farm Court, Egham, Surrey, TW20 9JR

FLOOR PLAN



Total area: approx. 45.9 sq. metres (493.9 sq. feet)

AWAITING EPC

COUNCIL TAX BAND:

C - Runnymede Borough Council

LEASE:

Approx. 62 years remaining (awaiting written confirmation)

SERVICE CHARGE:

Approx £2,400 per annum including building insurance (awaiting written confirmation)

VIEWINGS:

By appointment with the clients selling agents,
Nevin & Wells Residential on 01784 437 437 or visit
www.nevinandwells.co.uk



All measurements are approximate. Nevin & Wells Residential have not tested any systems or appliances.