



Pyne Road

Surbiton, KT6 7BN

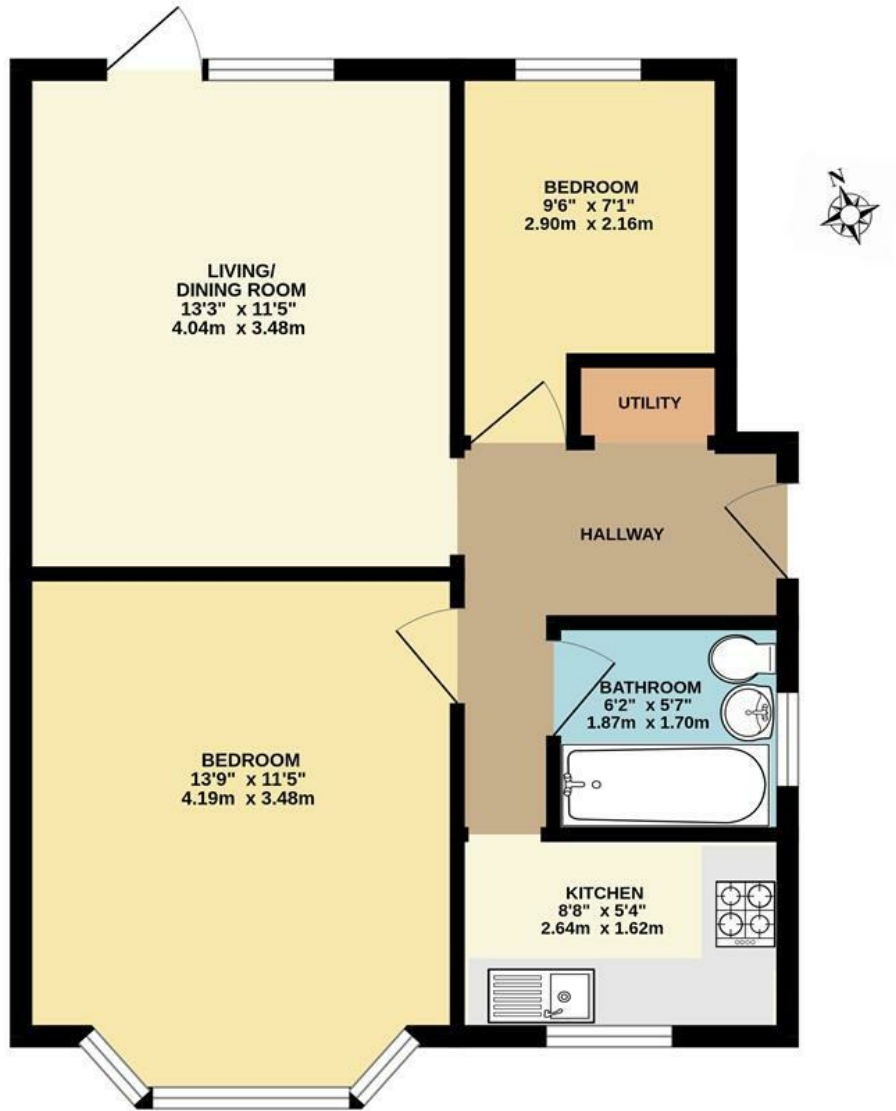
Guide Price £315,000

A charming two bedroom ground floor maisonette with direct access to a private garden. The accommodation comprises two bedrooms, a family bathroom and separate kitchen. Further benefits include off street parking and is also offered to market chain free. Situated close to local amenities, respected local schools and with great transport links all close by. Council Tax Band C

Material Information: Material Info: Brick Walls & Roof Tiles. Water / Electricity / Sewerage: Mains. Heating: Gas Mains. Internet FTTC. Mobile Coverage Indoor / Outdoor: Good.

- Maisonette
- Two Bedrooms
- Private Garden
- Leasehold - Long Lease
- Close to Local Amenities and Transport Links
- Ground Floor
- Separate Kitchen
- Off Street Parking
- Chain Free
- Respected Local Schools Nearby

Floor Plan

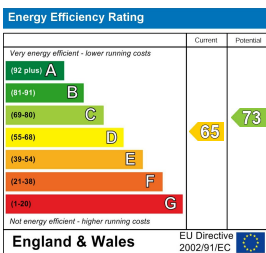


GROUND FLOOR MAISONETTE

PYNE ROAD, SURBITON
INTERNAL FLOOR AREA (APPROX.) 515 sq ft/ 47.8 sq m

Whilst every attempt has been made to ensure the accuracy of this floor plan, measurement of doors, windows, rooms and any other items are approximate and no responsibility is taken for any error, omission or mis-statement.
Made with Metropix © 2026.

Energy Efficiency Graph



These particulars, whilst believed to be accurate are set out as a general outline only for guidance and do not constitute any part of an offer or contract. Intending purchasers should not rely on them as statements of representation of fact, but must satisfy themselves by inspection or otherwise as to their accuracy. No person in this firm's employment has the authority to make or give any representation or warranty in respect of the property.