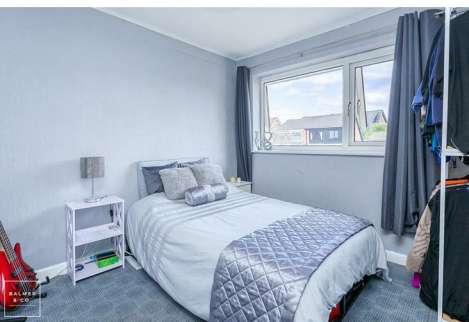
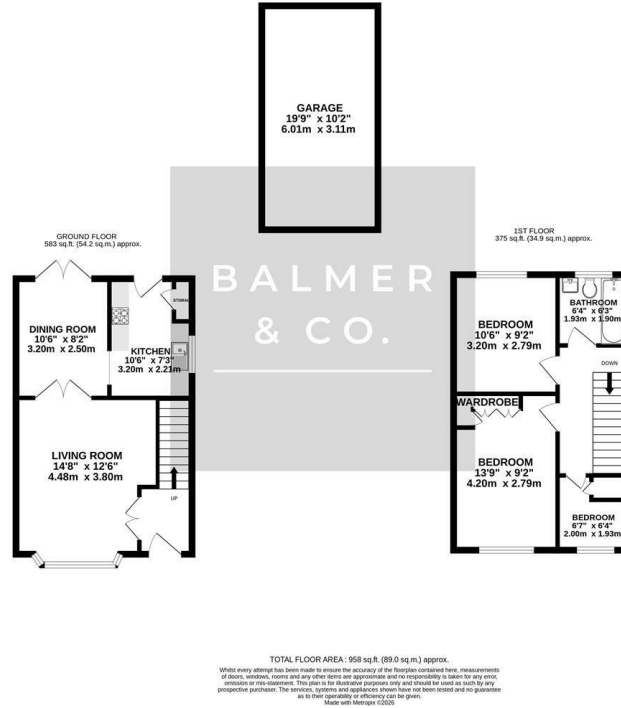


Bromley Drive, Leigh, WN7 5NA
Offers Over £180,000

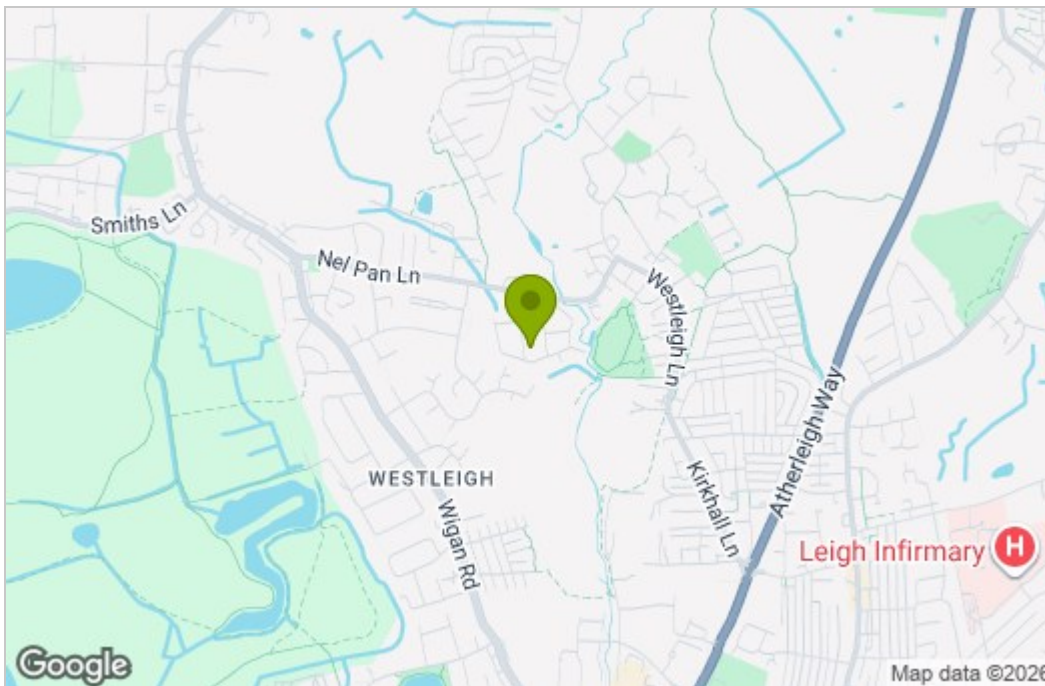


BALMER & CO in LEIGH are delighted to offer FOR SALE this three bedroom semi-detached home situated in a quiet residential area in Leigh. Well presented throughout, this property has been very well maintained by its current owners and simply must be viewed. Comprising in brief; entrance hallway, living room with gas fireplace, separate dining room with French doors leading to the rear garden with a fitted kitchen with freestanding appliances completing the ground floor. To the first floor is a master bedroom with fitted wardrobes, second double bedroom, a single bedroom and a three piece family bathroom suite. Externally the property is garden fronted with a long driveway to the side providing ample off-road parking, whilst to the rear there is a fully enclosed, East facing garden with a large detached garage. The property is ideally located within walking distance of Twelve Apostles RC Primary School and is close to other shops and amenities. Early viewings highly recommended, all enquiries welcome.

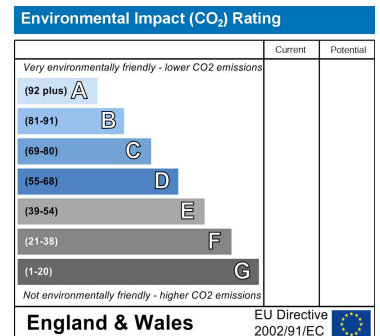
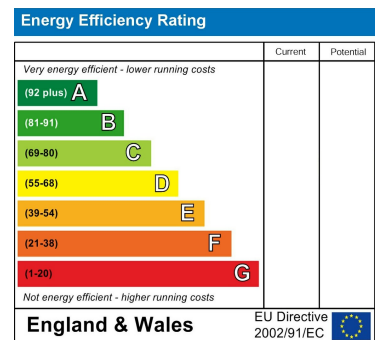
Floor Plan



Area Map



Energy Efficiency Graph



These particulars, whilst believed to be accurate are set out as a general outline only for guidance and do not constitute any part of an offer or contract. Intending purchasers should not rely on them as statements of representation of fact, but must satisfy themselves by inspection or otherwise as to their accuracy. No person in this firm's employment has the authority to make or give any representation or warranty in respect of the property.