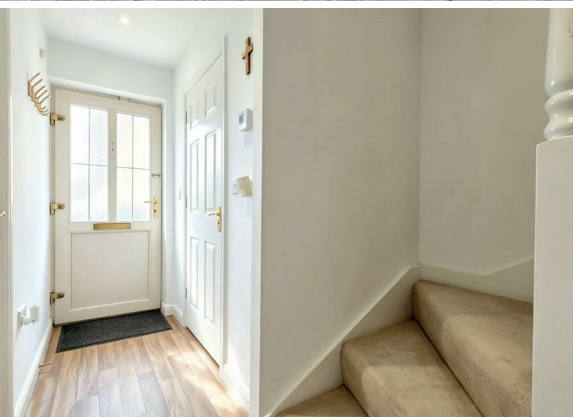


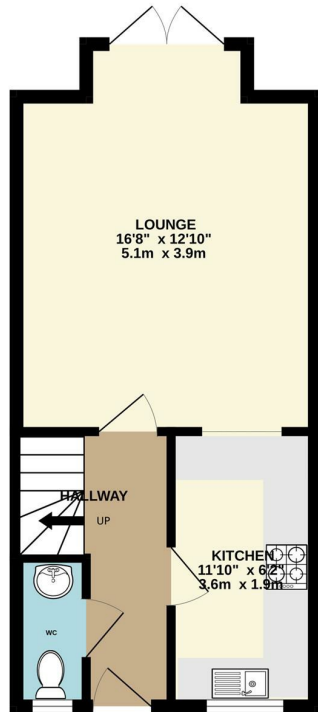


**3 Bed
House - Townhouse
located
in Goldthorpe**

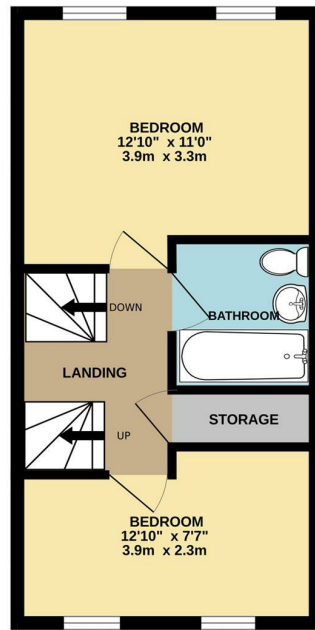
Offers in the region of
£175,000



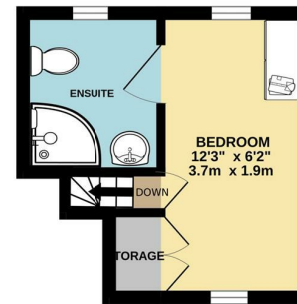
GROUND FLOOR
352 sq.ft. (32.7 sq.m.) approx.



1ST FLOOR
336 sq.ft. (31.2 sq.m.) approx.

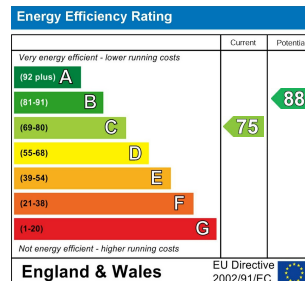


2ND FLOOR
131 sq.ft. (12.2 sq.m.) approx.



TOTAL FLOOR AREA : 819 sq.ft. (76.1 sq.m.) approx.

Whilst every attempt has been made to ensure the accuracy of the floorplan contained here, measurements of doors, windows, rooms and any other items are approximate and no responsibility is taken for any error, omission or mis-statement. This plan is for illustrative purposes only and should be used as such by any prospective purchaser. The services, systems and appliances shown have not been tested and no guarantee as to their operability or efficiency can be given.
Made with Metroplex ©2025



DIRECTIONS

CONTACT

Unit 6
Century 2 Business Centre 3 Dearne
Lane
Manvers
Rotherham

E: info@burrowsresidential.co.uk
T: 07507 905644

