



Guide Price
£290,000

Freehold

2x  1x  1x 

**Cambridge Crescent,
Maidstone, Kent ME15**

OVER 60?

Secure this property
for up to **59% less!**

Wards
Helping you move forwards



Main features

- Large driveway for multiple cars
- Beautifully presented with neutral decor throughout
- Nearby to local schools, shops and amenities
- Stunning garden with workshop and space to entertain
- Perfect for first time buyers and investors alike

Accommodation

GROUND FLOOR

- Porch
- Hallway
- Cloakroom
- Lounge: 14'9 x 10'7 (4.50m x 3.23m)
- Garden Room: 17'0 x 13'2 (5.19m x 4.02m)
- Dining Area: 10'0 x 9'4 (3.05m x 2.85m)
- Kitchen: 9'6 x 9'2 (2.90m x 2.80m)

FIRST FLOOR

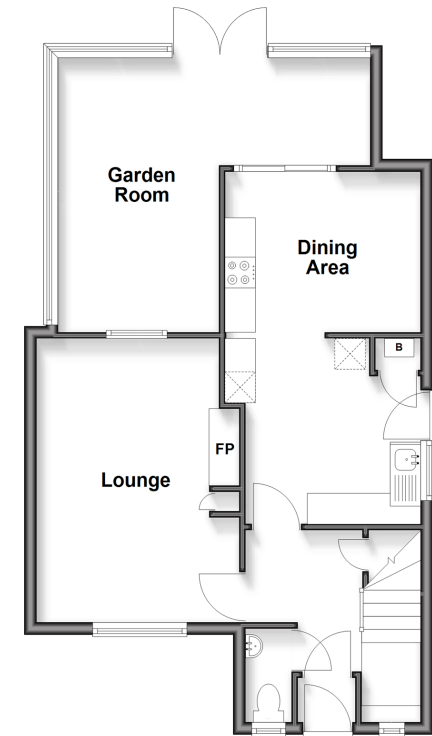
- Landing
- Bedroom 1: 14'9 x 9'8 (4.50m x 2.95m)
- Bedroom 2: 10'7 x 10'2 (3.23m x 3.10m)
- Bathroom

OUTSIDE

- Rear Garden
- Workshop
- Front Garden
- Driveway

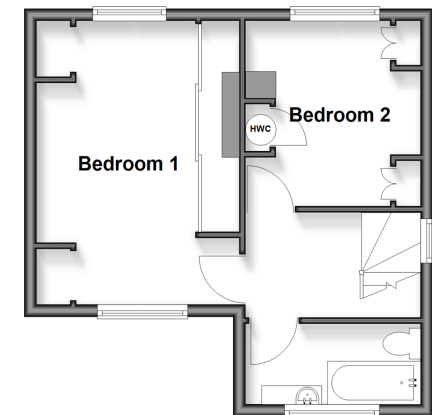
Split Level Ground Floor

Approx. 59.3 sq. metres (638.1 sq. feet)



First Floor

Approx. 33.7 sq. metres (362.8 sq. feet)



Call Maidstone - 01622 683737 ■ wardsof Kent.co.uk

- Legal advice should be taken to verify fixtures/fittings, planning, alterations and/or lease details
- Appliances & services are untested, dimensions are approximate and floor plans are not to scale
- Through a Homewise Home For Life Plan people aged 60+ can secure this property for up to 59% less, by purchasing a Lifetime Lease



13159300/20260122/CV/TB