



64 Dover Park, Dunfermline - KY11 8HU

Dunfermline

Offers Over £399,995





64 Dover Park

Dunfermline

Stunning extended executive villa on corner plot. Four or five bedrooms, master en-suite, large conservatory, double garage, luxury dining/ family modern kitchen, generous gardens, £400,000 home report.

Council Tax band: G

Tenure: Freehold

EPC Energy Efficiency Rating: C

EPC Environmental Impact Rating: C

- STUNNING EXECUTIVE DETACHED VILLA
- FOUR BEDROOMS MASTER EN-SUITE
- BAY WINDOW LOUNGE & CONSERVATORY
- LUXURY DINING KITCHEN & UTILITY ROOM
- HOME OFFICE/ BEDROOM 5
- MODERN FAMILY BATHROOM & SEP WC
- DOUBLE DRIVE - DOUBLE GARAGE
- PRIVATE REAR GARDEN
- DG- GCH - EPC C - HOME REPORT £400,000
- SUPERB MODERNISED FAMILY HOME IN CUL DE SAC
- VIEWING HIGHLY RECOMMENDED



GARDEN

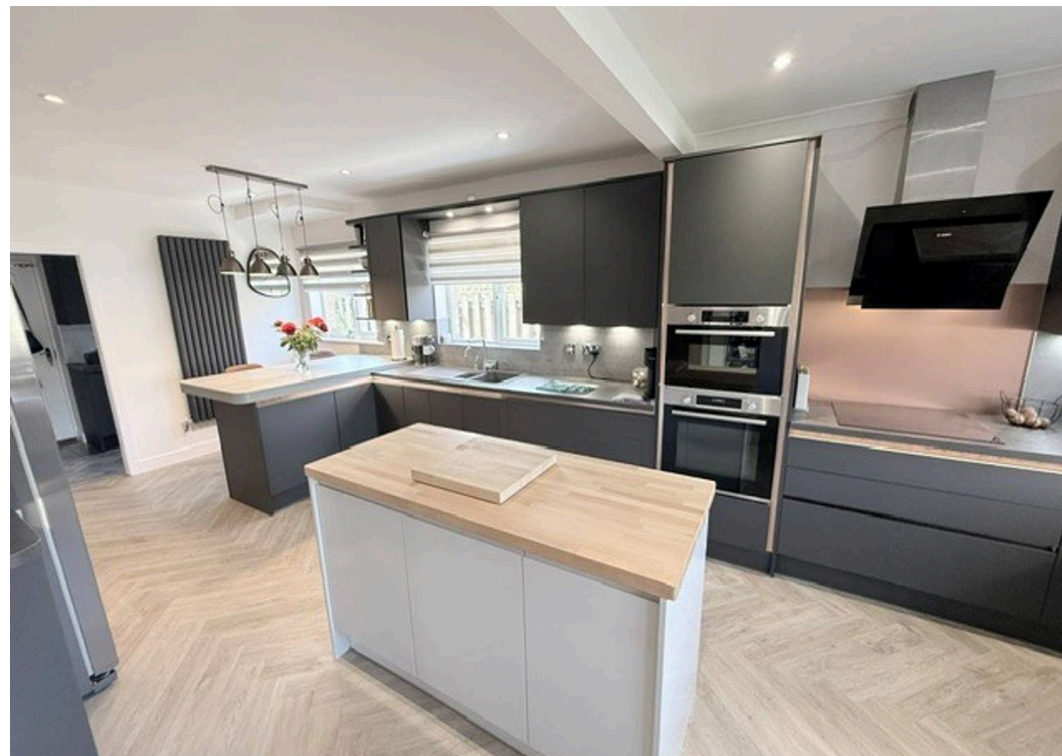
DRIVEWAY

4 Parking Spaces

DOUBLE GARAGE

2 Parking Spaces

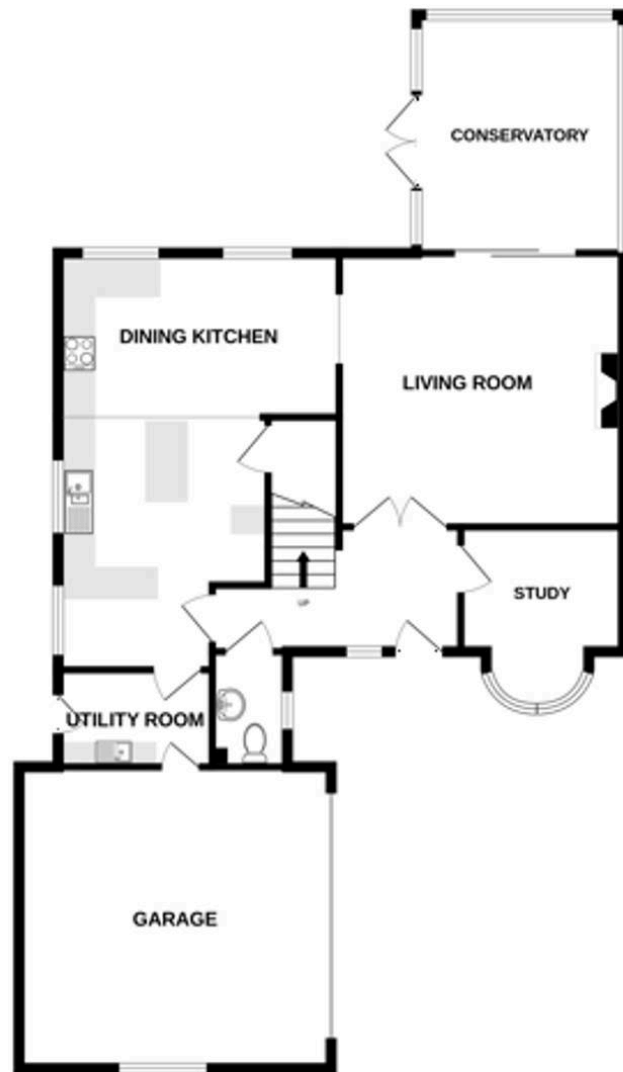




Energy Efficiency Rating		
	Current	Potential
<i>Very energy efficient - lower running costs</i>		
(92+) A		
(81-91) B		
(69-80) C	72	79
(55-68) D		
(39-54) E		
(21-38) F		
(1-20) G		
<i>Not energy efficient - higher running costs</i>		
England, Scotland & Wales		
		EU Directive 2002/91/EC

Environmental Impact (CO ₂) Rating		
	Current	Potential
<i>Very environmentally friendly - lower CO₂ emissions</i>		
(92+) A		
(81-91) B		
(69-80) C	70	74
(55-68) D		
(39-54) E		
(21-38) F		
(1-20) G		
<i>Not environmentally friendly - higher CO₂ emissions</i>		
England, Scotland & Wales		
		EU Directive 2002/91/EC

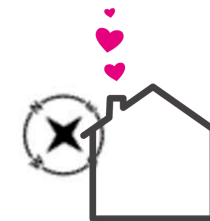
GROUND FLOOR



1ST FLOOR



Whilst every attempt has been made to ensure the accuracy of the floorplan contained here, measurements of doors, windows, rooms and any other items are approximate and no responsibility is taken for any error, omission or mis-statement. This plan is for illustrative purposes only and should be used as such by any prospective purchaser. The services, systems and appliances shown have not been tested and no guarantee as to their operability or efficiency can be given.
Made with Metropix ©2026



home sweet home
estate agents
your local property experts