



Tooley Street

Southwark, SE1

£2,800 per month
(£646.15 per week)

The property features a bright and inviting living area with high ceilings, large sash windows that flood the space with natural light and little balcony. The kitchen is well-equipped with quality appliances and smart storage solutions, while the spacious double bedroom provides a peaceful retreat overlooking the charming cityscape. A contemporary bathroom suite completes the accommodation.

CHESTERTONS



Tooley Street

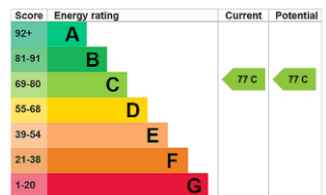
Southwark, SE1

- One Bedroom
- One Bathroom
- Balcony
- Furnished
- Short Let



Perfectly positioned just moments from London Bridge Station, Tower Bridge, and the River Thames, the apartment offers a vibrant lifestyle surrounded by excellent cafés, restaurants, and cultural landmarks.

Minimum Term: 1 months
Deposit Required: £0.00
Local Authority: Southwark
Council Tax Band: D
EPC Rating: C
Furnished



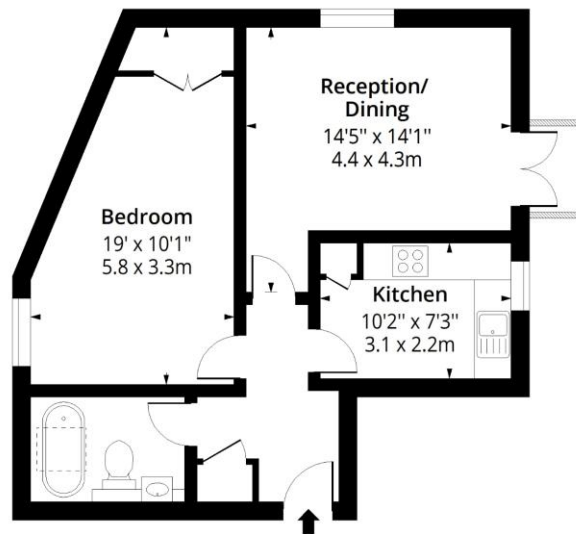
Chestertons Tower Bridge Lettings

220 Tower Bridge Road
 Tower Bridge
 London
 SE1 2UP
 towerbridgelettingsusers@chestertons.co.uk
 02073576911
 chestertons.co.uk

Additional tenant charges apply (fees apply to non-AST tenancies only)
 Tenancy Agreement Fee: £300
 References per Tenant/Guarantor: £60
 Inventory check (approx. £100 – £250 inc. VAT)
 chestertons.co.uk/property-to-rent/applicable-fees

Tooley Street, SE1

Approx. Gross Internal Area 549 Sq Ft - 51.00 Sq M
Approx. Gross Balcony Area 12 Sq Ft - 1.11 Sq M



Third Floor

Floor Area 549 Sq Ft - 51.00 Sq M



Measured according to RICS IPMS2. Floor plan is for illustrative purposes only and is not to scale. Every attempt has been made to ensure the accuracy of the floor plan shown, however all measurements, fixtures, fittings and data shown are an approximate interpretation for illustrative purposes only. 1 sq m = 10.76 sq feet.

lpaplus.com

Date: 12/11/2025

