



Dellfield Road, Hatfield, AL10 8EW

Maisonette - Lower | 1 Bedrooms


£1,200 Per Month

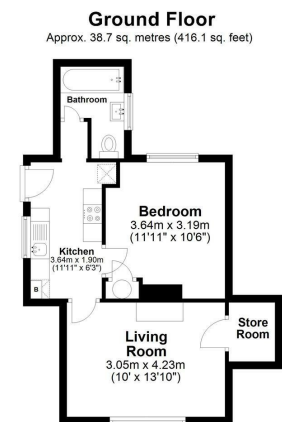
LARKHAM
PIKE &

www.larkhamandpike.co.uk



A one bedroom ground floor maisonette offered in good condition throughout having recently been redecorated and carpeted. Situated in an excellent location on the door step of Hatfield Town Centre and close to all local amenities. The property consists of kitchen with appliances, bathroom with bath/shower mixer, lounge and double bedroom. Further benefits include gas central heating, double glazing and shared use of gardens. Available now subject to satisfactory references/guarantors. RENT £1100 per calendar month. DEPOSIT £1265. Epc rating C. Tax band B

| Energy Efficiency Rating | | |
|---|----------------------------|---|
| | Current | Potential |
| Very energy efficient - lower running costs | | |
| (92 plus) A | | |
| (81-91) B | | |
| (69-80) C | 70 | 72 |
| (55-68) D | | |
| (39-54) E | | |
| (21-38) F | | |
| (1-20) G | | |
| Not energy efficient - higher running costs | | |
| England & Wales | EU Directive 2002/91/EC |  |



Total area: approx. 38.7 sq. metres (416.1 sq. feet)
 Sketch layout only. This plan is not drawn to scale and is for identification purposes only. Produced for Larkham & Pikes Estate Agents. Plan produced using PlanUp.