

Carmichael Close

Ruislip • Middlesex • HA4 6LG
PCM: £1,650 PCM



coopers
est 1986

A SUPERB two bedroom, GROUND FLOOR apartment set in Ruislip Gardens and offering GREAT SPACE and a most CONVENIENT location. Arranged over one level, there are TWO DOUBLE bedrooms, a bathroom, kitchen and SPACIOUS living room. There is also a PRIVATE TERRACE which is accessed from the master bedroom and living room.

Only a SHORT WALK to Ruislip Gardens Tube Station (Central Line) and a few minutes drive to the A40 which provides quick and easy access into London and surrounding counties.

Ground floor apartment

Larger than average

Two double bedrooms

Master bedroom with access onto terrace

Spacious living room

Modern kitchen and bathroom

Well located to shops and transport

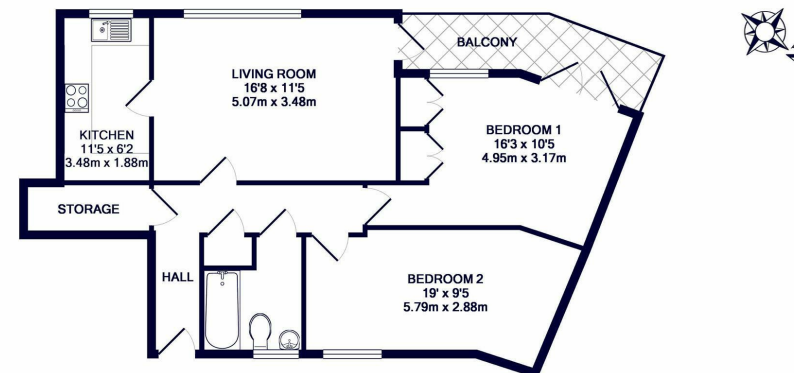
Private outdoor space to the rear

Allocated parking

Unfurnished

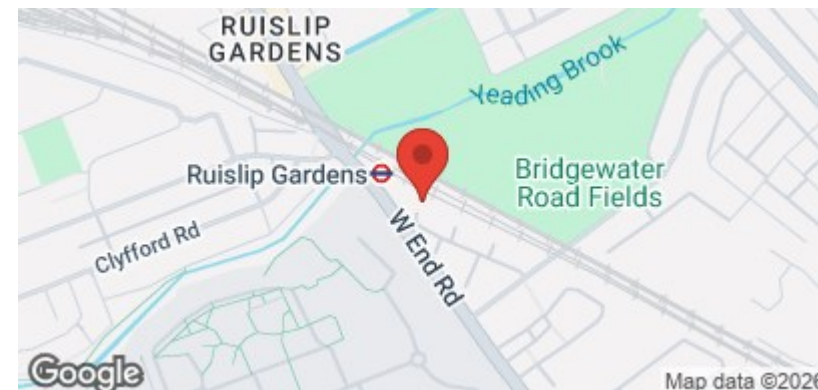
Available Date

31st January 2026



TOTAL APPROX. FLOOR AREA 730 SQ.FT. (67.8 SQ.M.)

Whilst every attempt has been made to ensure the accuracy of the floor plan contained here, measurements of doors, windows, rooms and any other items are approximate and no responsibility is taken for any error, omission, or mis-statement. This plan is for illustrative purposes only and should be used as such by any prospective purchaser. The services, systems and appliances shown have not been tested and no guarantee as to their operability or efficiency can be given.
Made with Metropix ©2018

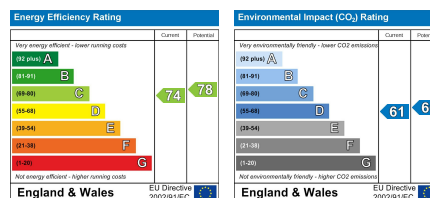


coopers
est 1986

01895 625 625

**126-128 High Street, Ruislip,
Middlesex, HA4 8LL**
rl@coopersresidential.co.uk

CoopersResidential.co.uk



Important Notice: These particulars, whilst believed to be accurate are set out as a general outline only for guidance and do not constitute any part of an offer or contract. Intending purchasers should not rely on them as statements or representation of fact, but must satisfy themselves by inspection or otherwise has the authority to make or give any representation or warranty in respect of the property.