



Clarence Avenue, SW4

£475,000

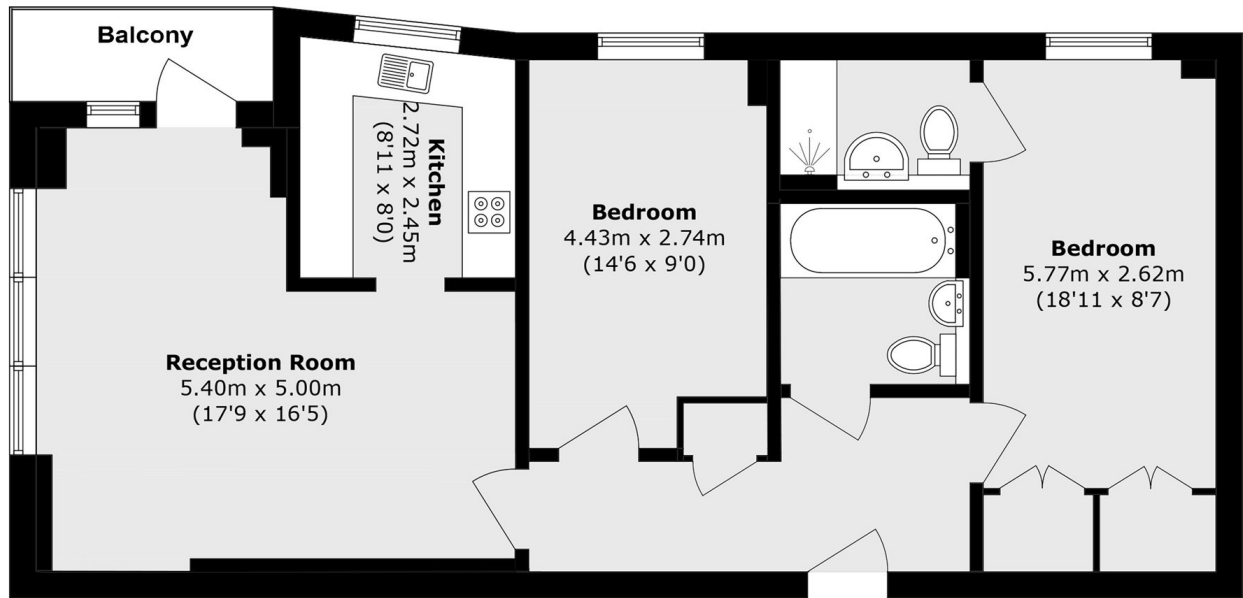
This excellent ground-floor contemporary apartment is situated within a highly desirable modern development and has been recently refurbished to an excellent standard throughout. The accommodation comprises a spacious reception room with access onto private outside space, an adjoining well-equipped kitchen which includes a range of integrated appliances, two double bedrooms with fitted wardrobes and two bathrooms. Offered to the market with no onward chain.

Clarence Avenue is ideally situated for the many local boutique shops, restaurants and bars of Abbeville Village, and the green open spaces of Clapham Common. Clapham Common & Clapham South stations are just a short walk away.

Features

- Modern Apartment
- Reception Room
- Integrated Kitchen
- Two Double Bedrooms
- Terrace
- Available Parking

Clarence Avenue, London, SW4



Total area (approx.): 74.0 sq. m (796.5 sq. ft)