



Byam Street, SW6

£650,000

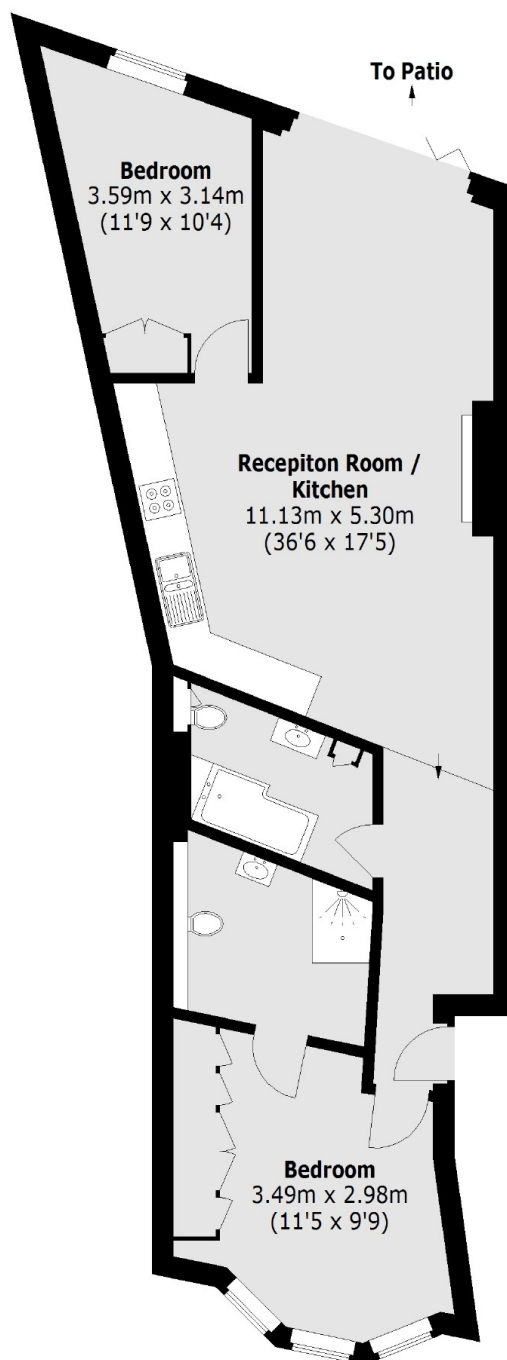
A spacious, well finished two double bedroom ground floor apartment with a larger than usual garden. The property has an enviable living space which is perfect for entertaining.

Located in the popular Sands End, the property is within close proximity to Imperial Wharf, Parsons Green and Fulham Broadway.

Features

- Two Double Bedrooms
- Open Plan Kitchen/Living
- Spacious Private Garden
- Two Bathrooms
- Well Finished
- Quiet Residential Street

Byam Street, London, SW6



Ground Floor

Total area (approx.): 78.44 sq. m (844 sq. ft)

Dexters

Fulham
569 Fulham Road
London
SW6 1ES
Sales
020 7386 5386

Energy Rating: Tbc. We aim to make our particulars both accurate and reliable. However they are not guaranteed; nor do they form part of an offer or contract. If you require clarification on any points then please contact us, especially if you're traveling some distance to view. Please note that appliances and heating systems have not been tested and therefore no warranties can be given as to their good working order.

 **RICS** | Regulated
Estate Agent
and Letting Agent

dexters.co.uk