



Gladstone Street, Leicester, LE8 8AH

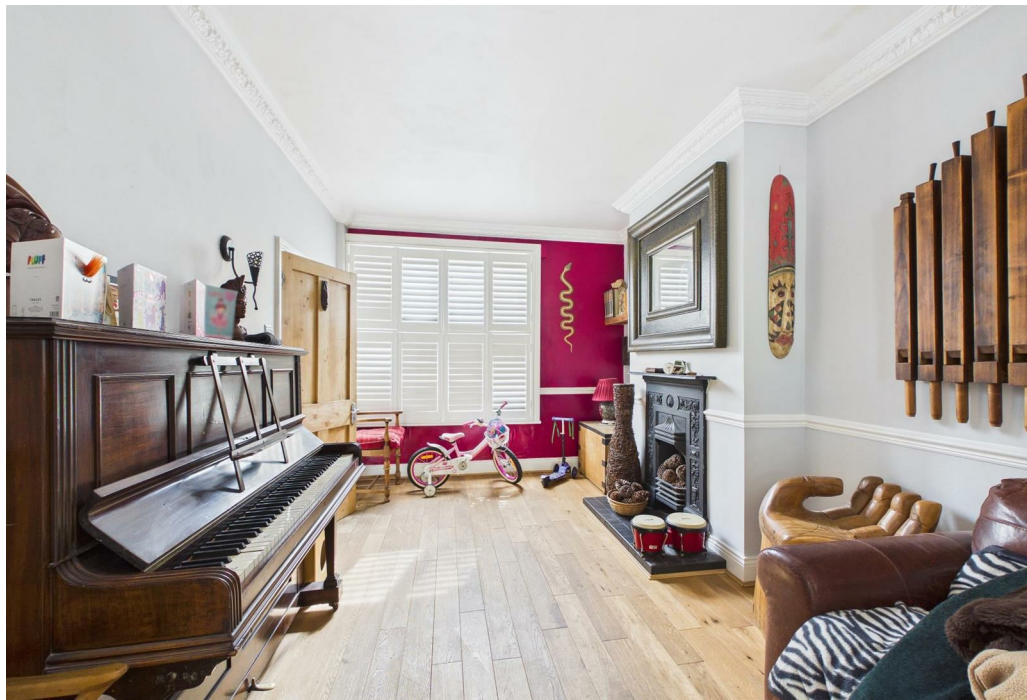
**SHELDON
BOSLEY
KNIGHT**

LAND AND
PROPERTY
PROFESSIONALS

Property Description

*** AVAILABLE 1ST MAY *** Nestled in the charming village of Fleckney, Leicester, this delightful house on Gladstone Street offers a perfect blend of comfort and space, making it an ideal family home. With three generously sized double bedrooms, this property ensures ample room for relaxation and privacy. The two well-appointed bathrooms provide convenience for busy mornings and family life. The heart of the home is undoubtedly its four reception rooms, which offer versatile spaces for entertaining guests, enjoying family time, or simply unwinding after a long day. The addition of a conservatory allows for a seamless connection to the outdoors, providing a bright and airy space to enjoy the garden throughout the year. Speaking of the garden, the large outdoor area is perfect for those who appreciate nature and outdoor activities. It offers a wonderful space for children to play, for gardening enthusiasts to cultivate their plants, or for hosting summer barbecues with friends and family. For those with vehicles, the property includes parking for two vehicles, ensuring convenience and ease of access. Additionally, the cellar provides extra storage space, catering to all your organisational needs. Council Tax Band E. Energy Rating E.







Key Features

- Available 1st May
- Fleckney, Leicestershire
- Semi Detached House
- 3 Bedrooms
- Unfurnished/Part Furnished
- Large Garden
- Garage and Driveway
- Council Tax Band E
- Energy Rating E

£2,100 PCM